

# CEO REPORT

MARCH 2020



# OUR MISSION

The Virginia Railway Express, a joint project of the Northern Virginia Transportation Commission and the Potomac Rappahannock Transportation Commission, will provide safe, cost-effective, accessible, reliable, convenient, and customer responsive commuter-oriented rail passenger service. VRE contributes to the economic vitality of its member jurisdictions as an integral part of a balanced, intermodal regional transportation system.



CEO REPORT | MARCH 2020

## TABLE OF CONTENTS

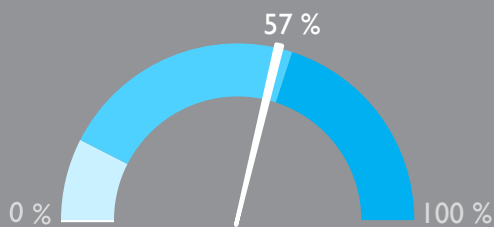
|   |                              |
|---|------------------------------|
| SUCCESS AT A GLANCE .....   | 3                            |
| ON-TIME PERFORMANCE .....   | 4                            |
| AVERAGE DAILY RIDERSHIP .....   | 6                            |
| SUMMONSES ISSUED .....  | 7                            |
| TRAIN UTILIZATION .....   | 8                            |
| PARKING UTILIZATION .....   | 9                            |
| FINANCIAL REPORT .....  | 10                           |
| COMMUTER RAIL OPERATING AND CAPITAL (C-ROC) FUND QUARTERLY REPORT ..... | ERROR! BOOKMARK NOT DEFINED. |
| FACILITIES UPDATE .....   | 11                           |
| UPCOMING PROCUREMENTS .....   | 12                           |
| CAPITAL PROJECTS UPDATES .....  | 13                           |
| PROJECTS PROGRESS REPORT .....  | 15                           |



VIRGINIA RAILWAY EXPRESS  
A better way. A better life.

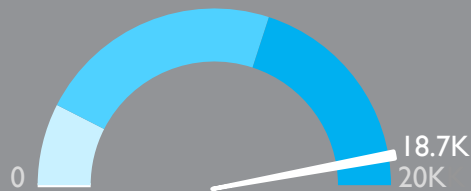


# SUCCESS AT A GLANCE



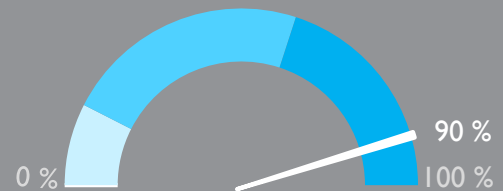
PARKING  
UTILIZATION

The total number of parking spaces used in the VRE system during the month, divided by the total number of parking spaces available.



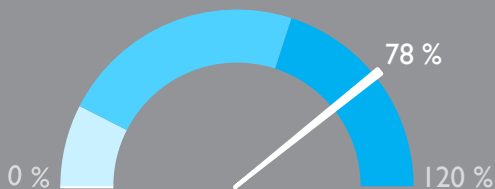
AVERAGE DAILY  
RIDERSHIP

The average number of boardings each operating day inclusive of Amtrak Step-Up boardings but excluding "S" schedule operating days.  
Same month, previous year: 14,913



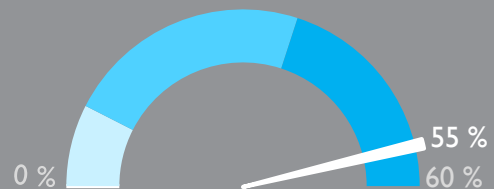
ON-TIME  
PERFORMANCE

Percentage of trains that arrive at their destination within five minutes of the schedule.  
Same month, previous year: 89%



SYSTEM CAPACITY

The percent of peak hour train seats occupied.  
The calculation excludes reverse flow and non-peak hour trains.



OPERATING RATIO

The monthly operating revenues divided by the monthly operating expenses, which depicts the percent of operating costs paid by the riders.  
Board-established goal: 52%

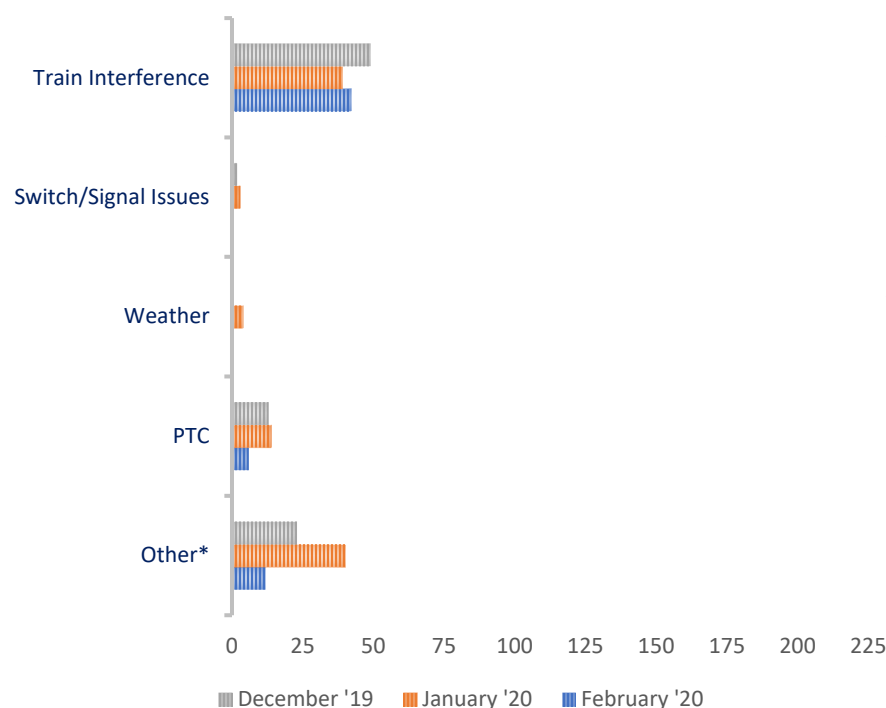
February 2020

# ON-TIME PERFORMANCE

## OUR RECORD

|                     | February 2020 | January 2020 | February 2019 |
|---------------------|---------------|--------------|---------------|
| Manassas Line       | 89%           | 83%          | 89%           |
| Fredericksburg Line | 91%           | 88%          | 90%           |
| Systemwide          | 90%           | 85%          | 89%           |

## PRIMARY REASON FOR DELAY



VRE operated 608 trains in February. Our on-time rate for February was 90 percent.

Sixty trains arrived more than five minutes late to their final destinations. Of those late trains, 33 were on the Manassas Line (55 percent), and 27 were on the Fredericksburg Line (45 percent).

At 90 percent, systemwide on-time performance continues to improve. The most significant cause of delays is train interference, which correlates with system congestion.

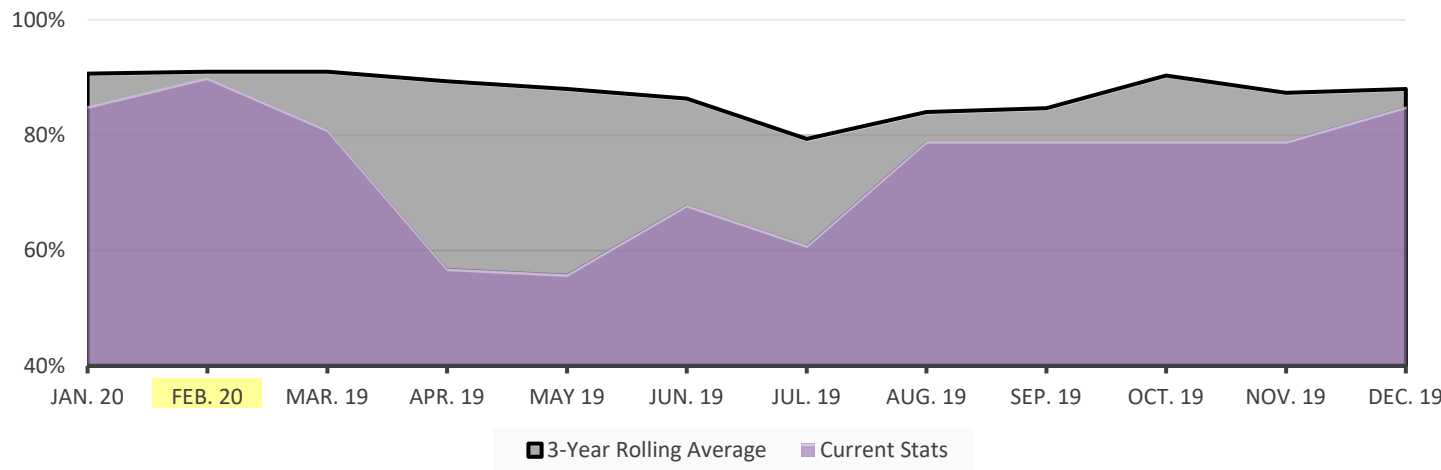
\*Includes trains that were delayed due to operational testing and passenger handling.

## LATE TRAINS

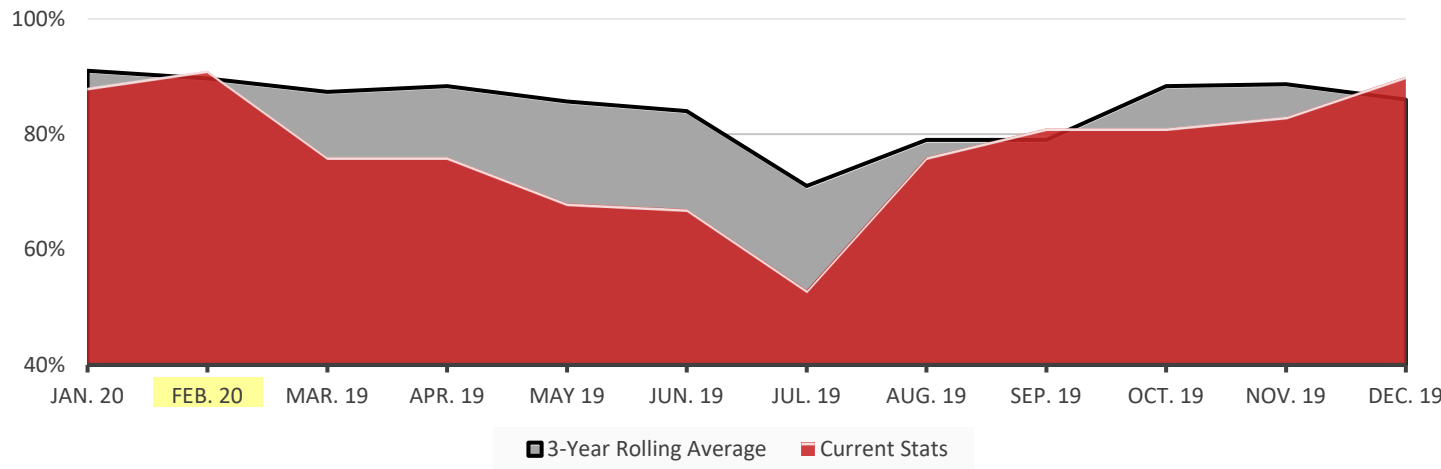
|                        | System Wide |      |      | Fredericksburg Line |      |      | Manassas Line |      |      |
|------------------------|-------------|------|------|---------------------|------|------|---------------|------|------|
|                        | Dec.        | Jan. | Feb. | Dec.                | Jan. | Feb. | Dec.          | Jan. | Feb. |
| Total late trains      | 87          | 100  | 60   | 29                  | 42   | 27   | 58            | 58   | 33   |
| Average minutes late   | 18          | 14   | 12   | 22                  | 12   | 15   | 16            | 16   | 10   |
| Number over 30 minutes | 7           | 10   | 2    | 3                   | 1    | 2    | 4             | 9    | 0    |
| Heat restrictions      | 0           | 0    | 0    | 0                   | 0    | 0    | 0             | 0    | 0    |

ON-TIME PERFORMANCE

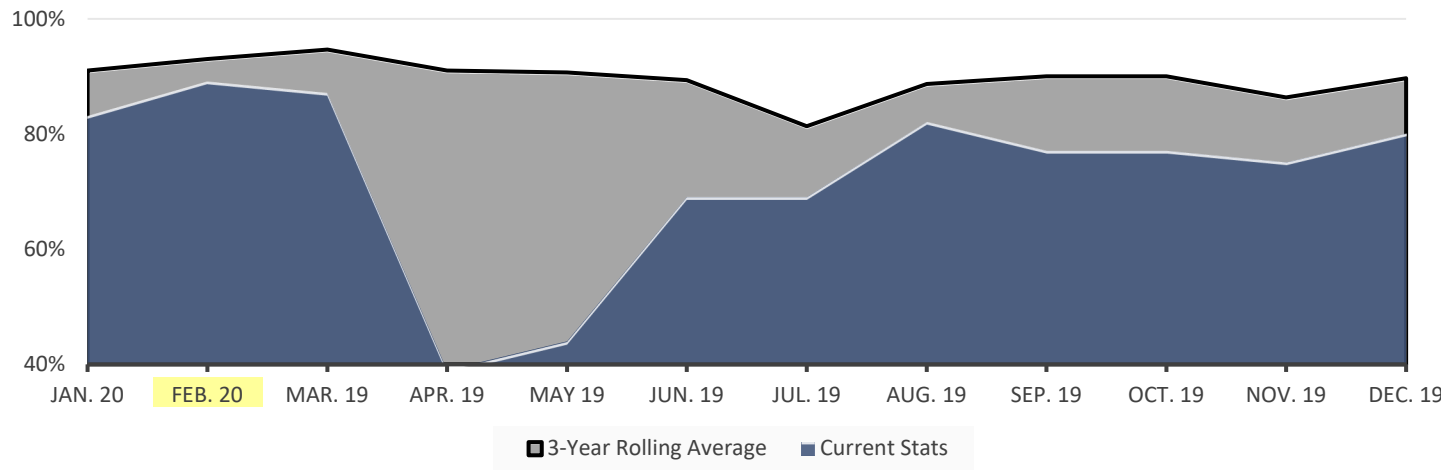
VRE SYSTEM



FREDERICKSBURG LINE

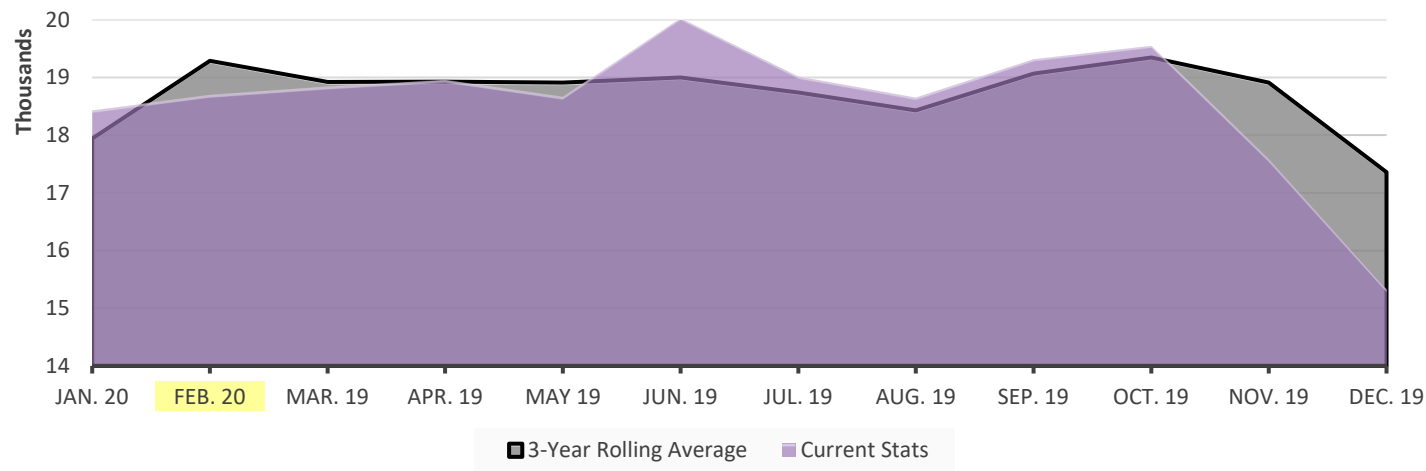


MANASSAS LINE

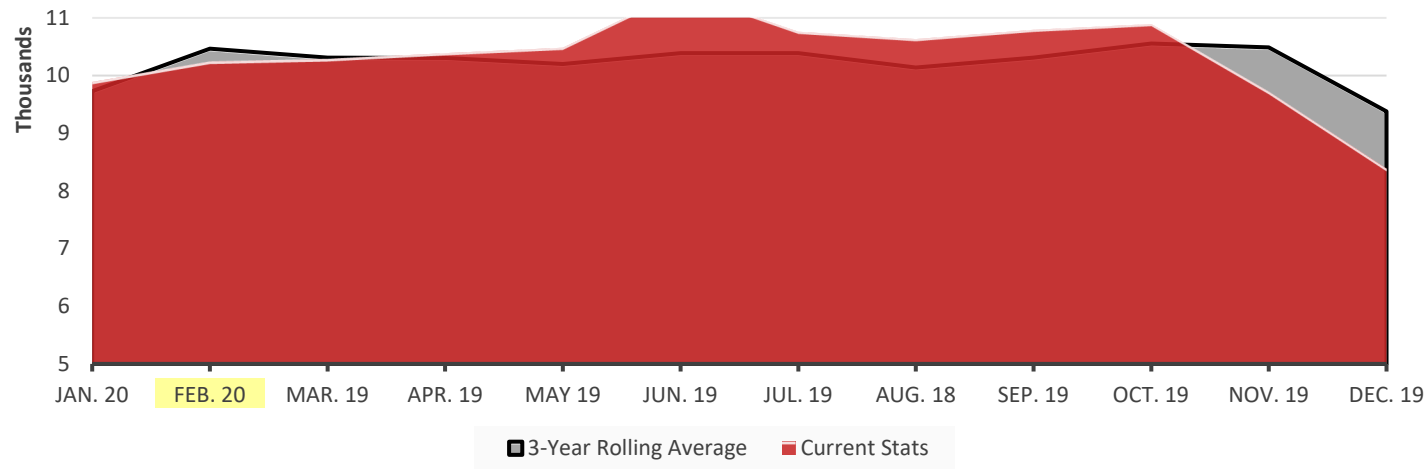


# AVERAGE DAILY RIDERSHIP

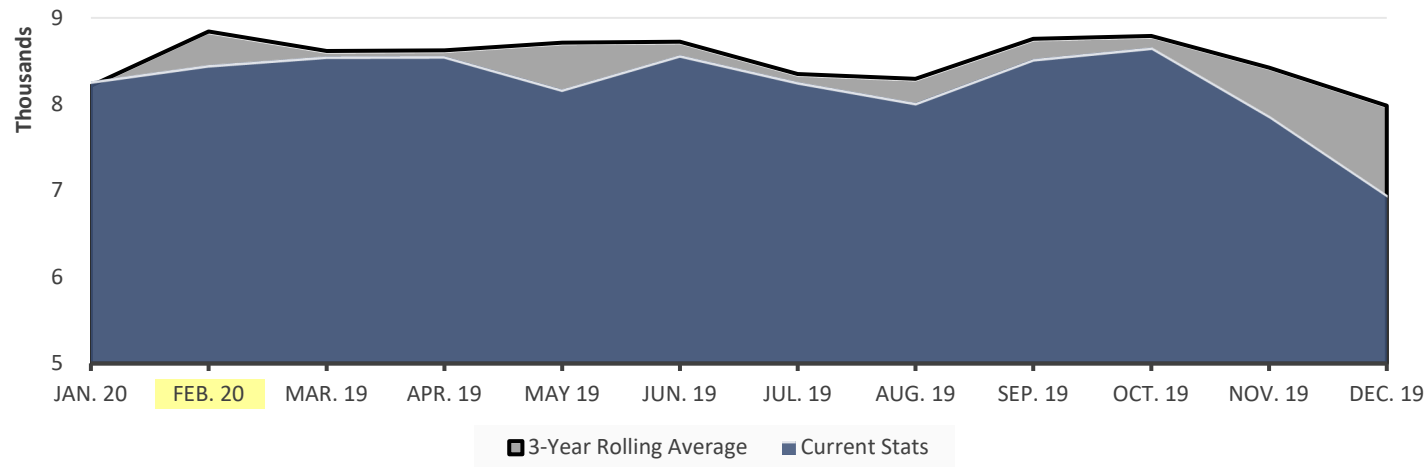
## VRE SYSTEM



## FREDERICKSBURG LINE



## MANASSAS LINE



MARCH 2020

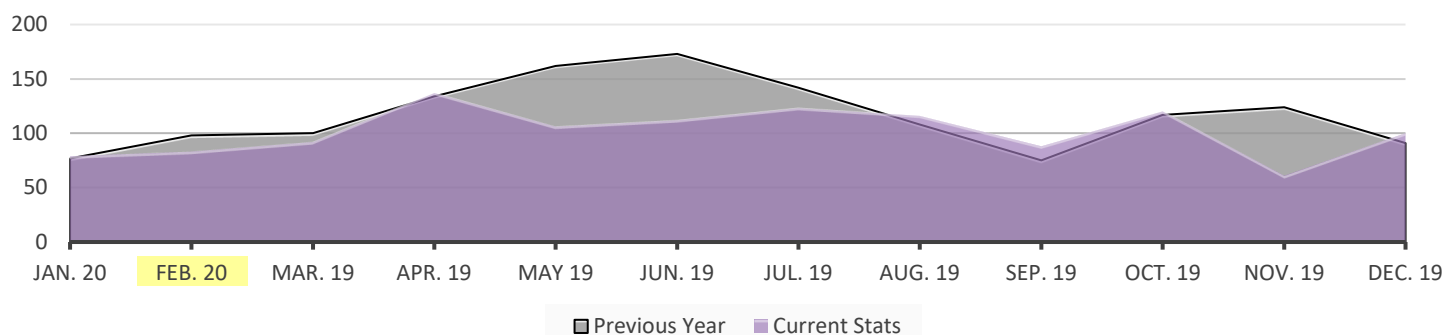
## RIDERSHIP UPDATES

Average daily ridership (ADR) in February was approximately 18,700.

|                         | February 2020 | January 2020 | February 2019 |
|-------------------------|---------------|--------------|---------------|
| Monthly Ridership       | 355,147       | 386,994      | 355,147       |
| Average Daily Ridership | 18,692        | 18,428       | 18,692        |
| Full Service Days       | 19            | 21           | 19            |
| "S" Service Days        | 0             | 0            | 0             |

## SUMMONSES ISSUED

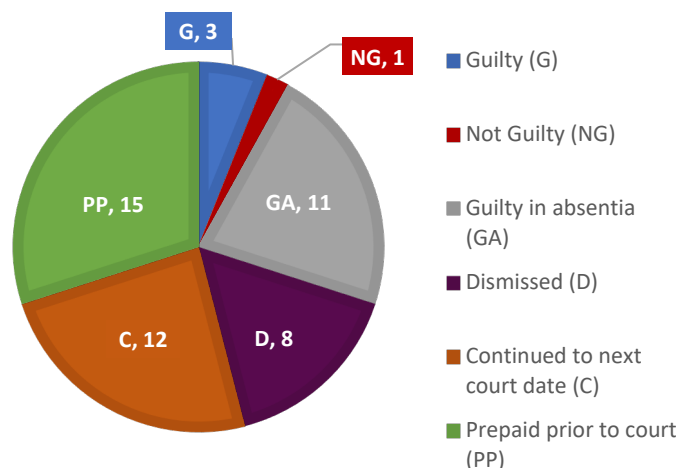
### VRE SYSTEM



### SUMMONSES WAIVED OUTSIDE OF COURT

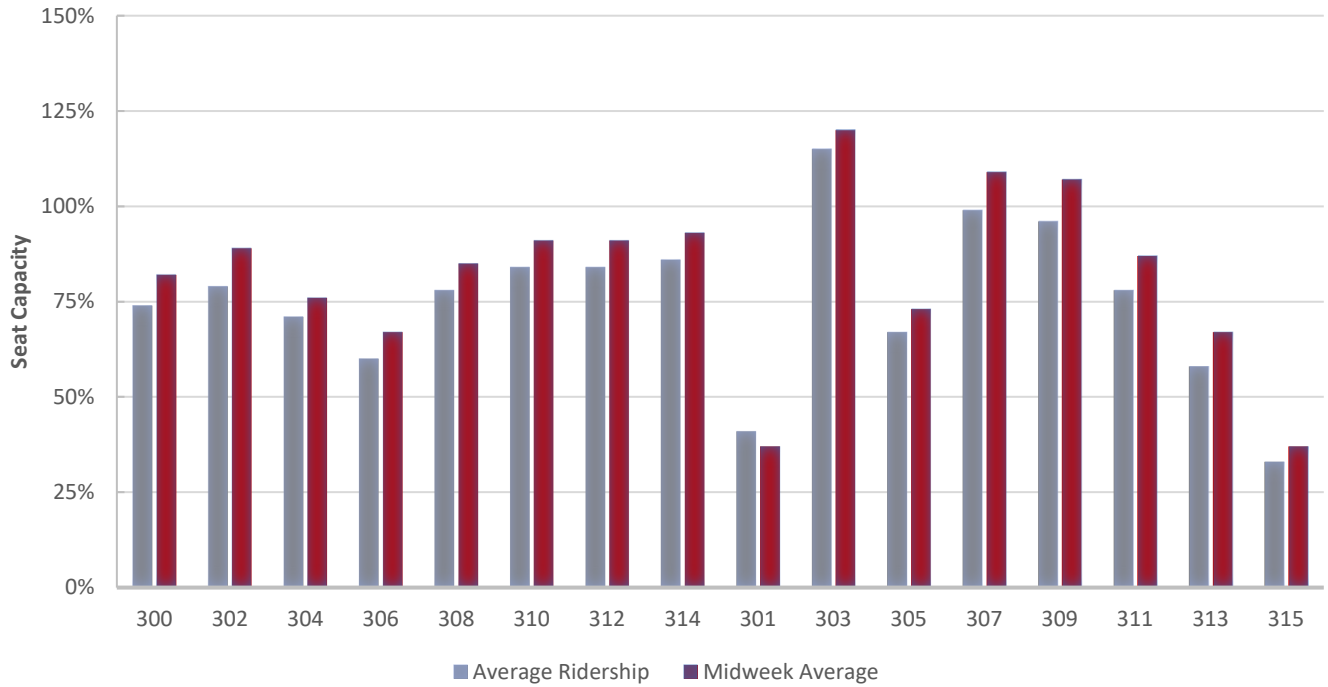
| Reason for Dismissal                       | Occurrences |
|--|-------------|
| Passenger showed proof of a monthly ticket | 36          |
| One-time courtesy                          | 10          |
| Per the request of the conductor           | 3           |
| Defective ticket                           | 0           |
| Per ops manager                            | 1           |
| Unique circumstances                       | 0           |
| Insufficient information                   | 1           |
| Lost and found ticket                      | 0           |
| Other                                      | 3           |
| <b>Total Waived</b>                        | <b>54</b>   |

### MONTHLY SUMMONSES COURT ACTION

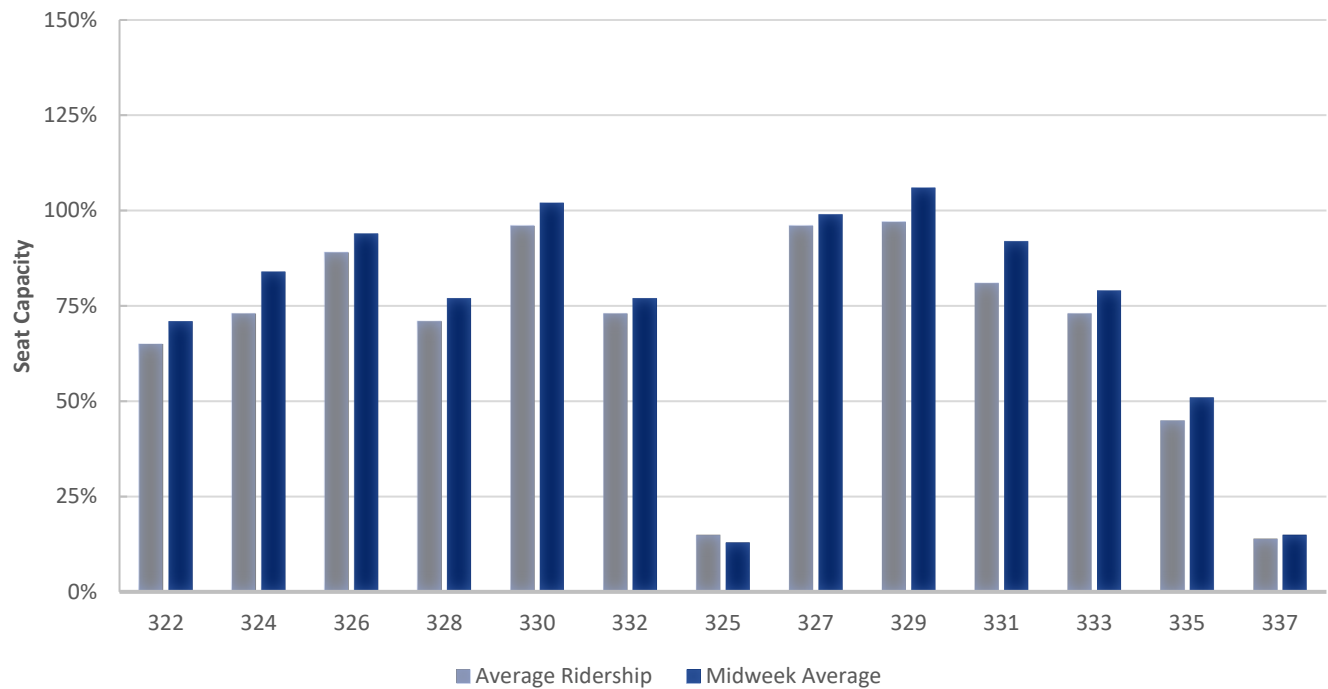


# TRAIN UTILIZATION

## FREDERICKSBURG LINE

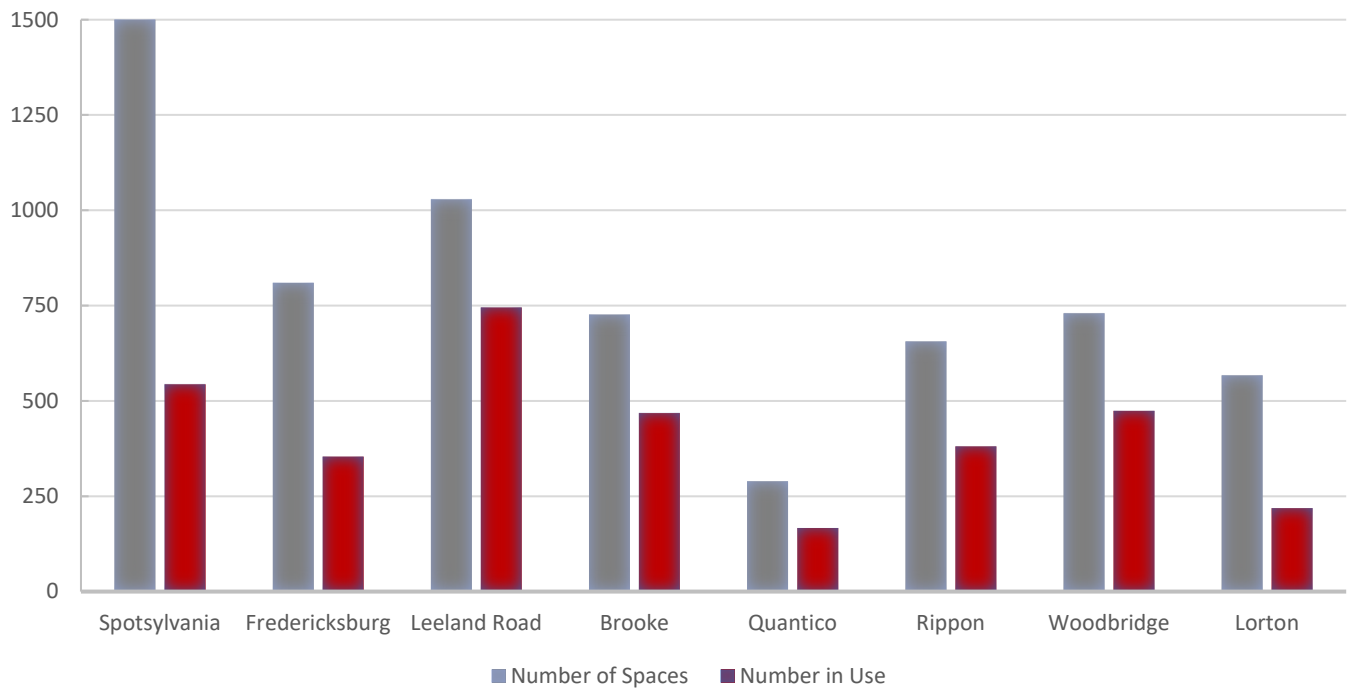


## MANASSAS LINE

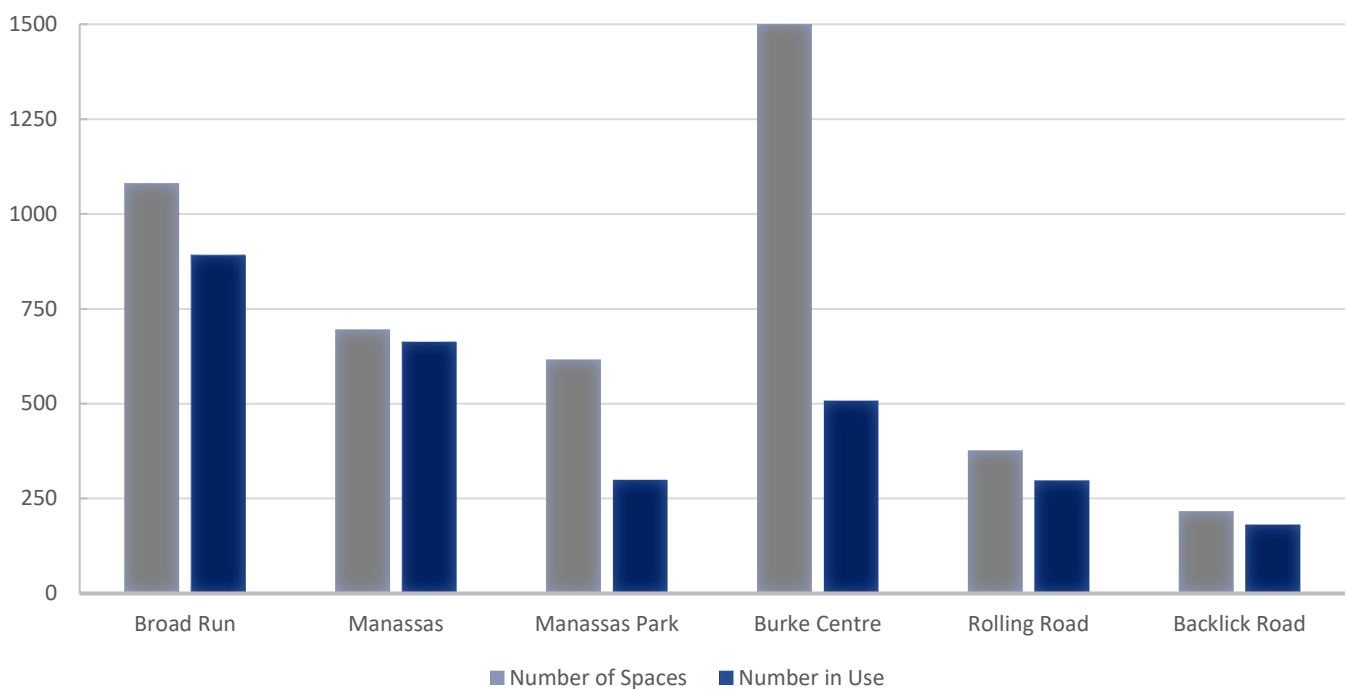


## PARKING UTILIZATION

### FREDERICKSBURG LINE



### MANASSAS LINE



# FINANCIAL REPORT

Fare revenue through the first seven months of FY 2020 is approximately \$15,000 above budget (a favorable variance of 0.1 percent) and is 5.3 percent above the same period in FY 2019. Ridership and fare revenue in this period last year were negatively impacted by the partial government shutdown.

The operating ratio through January is 55 percent, which is above VRE's budgeted operating ratio of 52 percent for the full 12 months of FY 2020. VRE is required to budget a minimum operating ratio of 50 percent.

A summary of the FY 2020 financial results through January follows, including information on major revenue and expense categories. Please note that these figures are preliminary and unaudited.

| FY 2020 Operating Budget Report<br>Month Ended January 31, 2020 |                     |                     |                   |                   |                          |                    |                      |
|---|---------------------|---------------------|-------------------|-------------------|--------------------------|--------------------|----------------------|
|   | CURR. MO.<br>ACTUAL | CURR. MO.<br>BUDGET | YTD<br>ACTUAL     | YTD<br>BUDGET     | YTD \$<br>VARIANCE       | YTD %<br>VARIANCE  | TOTAL FY19<br>BUDGET |
| <b>Operating Revenue</b>  |                     |                     |                   |                   |                          |                    |                      |
| Passenger Ticket Revenue  | 3,650,039           | 3,650,833           | 25,570,808        | 25,555,833        | 14,974                   | 0.1%               | 43,810,000           |
| Other Operating Revenue   | 55,047              | 18,750              | 172,406           | 131,250           | 41,156                   | 31.4%              | 225,000              |
| <b>Subtotal Operating Revenue</b>                               | <b>3,705,086</b>    | <b>3,669,583</b>    | <b>25,743,213</b> | <b>25,687,083</b> | <b>56,130</b>            | <b>0.2%</b>        | <b>44,035,000</b>    |
| Jurisdictional Subsidy (1)                                      | 8,705,539           | 8,705,539           | 17,767,748        | 17,767,748        | -                        | 0.0%               | 13,239,555           |
| Federal/State/Other Jurisdictional Subsidy                      | 2,725,547           | 2,776,443           | 18,778,145        | 19,201,154        | (423,009)                | -2.2%              | 32,665,351           |
| Appropriation from Reserve/Other Income                         | -                   | -                   | -                 | -                 | -                        | 0.0%               | -                    |
| Interest Income   | 127,841             | 41,667              | 902,689           | 291,667           | 611,023                  | 209.5%             | 500,000              |
| <b>Total Operating Revenue</b>                                  | <b>15,264,013</b>   | <b>15,193,232</b>   | <b>63,191,796</b> | <b>62,947,652</b> | <b>244,144</b>           | <b>0.4%</b>        | <b>90,439,906</b>    |
| <b>Operating Expenses</b>                                       |                     |                     |                   |                   |                          |                    |                      |
| Departmental Operating Expenses                                 | 6,361,105           | 6,860,730           | 46,429,795        | 50,357,900        | 3,928,105                | 7.8%               | 84,203,149           |
| Debt Service  | 518,480             | 518,480             | 3,629,389         | 3,629,358         | (30)                     | 0.0%               | 6,221,757            |
| Other Non-Departmental Expenses                                 | 8,500               | 1,250               | 27,000            | 8,750             | (18,250)                 | 0.0%               | 15,000               |
| <b>Total Operating Expenses</b>                                 | <b>6,888,085</b>    | <b>7,380,460</b>    | <b>50,086,183</b> | <b>53,996,008</b> | <b>3,909,825</b>         | <b>7.2%</b>        | <b>90,439,906</b>    |
| <b>Net income (loss) from Operations</b>                        | <b>8,375,928</b>    | <b>7,812,771</b>    | <b>13,105,612</b> | <b>8,951,643</b>  | <b>4,153,969</b>         |                    | <b>-</b>             |
| <b>Operating Ratio</b>  |                     |                     | <b>55%</b>        | <b>51%</b>        | <b>Budgeted<br/>Goal</b> | <b>52%<br/>50%</b> |                      |

(1) Total jurisdictional subsidy is \$17,767,748. Portion shown as budgeted is attributed to Operating Fund only.

## FACILITIES UPDATE

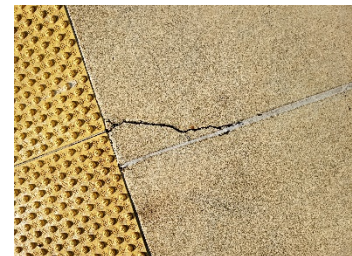
The following is a status update of VRE facilities projects.

### Completed projects:

1. Testing for asbestos-containing materials in areas to be renovated at Alexandria Headquarters. All test results negative.

### Projects scheduled to be completed this quarter:

1. Installation of electrical conduits and conductors for Variable Messaging System (VMS) at Alexandria Station
2. Submission of IFB package for modernization of east elevator at Woodbridge Station
3. Repair of minor cracks in west platform at Woodbridge Station
4. Submission of IFB package for canopy roof replacement at Backlick Road Station
5. Submission of IFB package for painting of Franconia-Springfield Station
6. Submission of IFB package for replacement of tactile warning strips at various stations



*Minor cracks to be repaired on Woodbridge Station west platform*



*Minor cracks to be repaired on Woodbridge Station west platform*

### Projects scheduled to be initiated this quarter:

1. GEC Task Order for design of platform widening at L'Enfant Station
2. GEC Task Order for design of minor structural repairs at Franconia-Springfield, Woodbridge, Rippon and Brooke Stations
3. Replacement of signage at Franconia-Springfield, Woodbridge and Leeland Road Stations
4. Replacement of parking lot light fixtures at Spotsylvania Station
5. GEC Task Order for design of renovations to Alexandria Headquarters
6. Replacement of HVAC system at Alexandria Headquarters Suite 201

### Ongoing projects:

1. Replacement of parking lot entrance signs at various stations
2. Replacement of waste and recycling receptacles at various stations

# UPCOMING PROCUREMENTS

- Construction of the Lifecycle Overhaul and Upgrade Facility
- Program management services
- Canopy roof replacement at the Backlick Road Station
- Modernization of VRE Woodbridge Station east elevator
- Passenger car wheelchair lift assemblies
- Construction of Rolling Road Station platform extension
- Purchase of LED light fixtures
- Construction of L'Enfant south storage track wayside power
- Variable Messaging System replacement
- Tactile strip replacements
- Pavement repairs and striping at the Rippon and Leeland Road stations and Fredericksburg Lot G
- Franconia-Springfield Station painting services
- Purchase of forklift trucks
- Final design services for VRE Broad Run expansion
- Safety and security consulting services
- Renewal of locomotive head end power engine systems
- Construction of Quantico Station improvements
- Construction management services for the Quantico Station Improvements project
- Overhaul of emergency generators
- Headquarters renovations
- Federal government relations services
- General engineering consulting services

## CAPITAL PROJECTS UPDATES

The following is a status update of VRE capital projects.

Completed projects or major project milestones:

1. Long Bridge Project Environmental Impact Statement (*study by others*) – Draft environmental impact statement, which identifies a preferred alternative and examines its impacts, was released and published in the Federal Register; DDOT and FRA are reviewing public comments to be addressed in the final environmental impact statement expected in the Summer of 2020.
2. New York Avenue Midday Storage Replacement Facility – preliminary design effort has been completed and continuing collaboration with Amtrak on project agreements.

Projects or project phases scheduled to be completed this quarter:

3. Franconia-Springfield Station Improvements (FRS) Draft 90% design plans.
4. Lorton Station Second Platform (LOR) Draft 90% design plans.
5. Rippon Station Improvements (RIP) Final 30% design plans.
6. Brooke Station Improvements (BKV) Final 30% design plans.
7. Leeland Road Station Improvements (LLR) Final 30% design plans.
8. Broad Run Expansion (BRX) Section 106 Consultation
9. Construction of Benchmark Road Slope Stabilization (Hamilton to Crossroads closeout)

Projects or project phases scheduled to be initiated this quarter:

10. IFB for construction of Rolling Road Station Improvements
11. Request for proposals (RFP) advertised for LOU Construction Management

Ongoing projects:

12. Broad Run Expansion (BRX)
13. Manassas Park Parking Improvements
14. Rolling Road Station Improvements
15. Crossroads Maintenance and Storage Facility (MSF) – land acquisition completed
16. Lifecycle Overhaul & Upgrade Facility (LOU)
17. Benchmark Road Slope Stabilization (Hamilton to Crossroads closeout)
18. Leeland Road Station Improvements
19. Brooke Station Improvements
20. Quantico Station Improvements
21. Rippon Station Improvements
22. Lorton Station Second Platform
23. Franconia-Springfield Station Improvements
24. Alexandria Station Improvements
25. Alexandria Station Track I Access (Slaters Lane)
26. Crystal City Station Improvements
27. L'Enfant Train Storage Track - South
28. L'Enfant Station Improvements
29. New York Avenue Midday Storage Facility
30. Potomac Shores VRE Station – *design by others*
31. Washington Union Station Improvements Environmental Impact Statement – *study by others*
32. DC2RVA Environmental Impact Statement – *study by others*

*Projects Progress Report Follows*

## Projects Progress Report to Follow

## Projects Progress Report to Follow

MARCH 2020

**This page intentionally left blank**



## VIRGINIA RAILWAY EXPRESS

1500 KING STREET, SUITE 202 • ALEXANDRIA, VA 22314 • 703.684.1001

[VRE.ORG](http://VRE.ORG)

