

CEO REPORT

AUGUST 2022



OUR MISSION

The Virginia Railway Express, a joint project of the Northern Virginia Transportation Commission and the Potomac Rappahannock Transportation Commission, will provide safe, cost-effective, accessible, reliable, convenient, and customer responsive commuter-oriented rail passenger service. VRE contributes to the economic vitality of its member jurisdictions as an integral part of a balanced, intermodal regional transportation system.



CEO REPORT | AUGUST 2022

TABLE OF CONTENTS

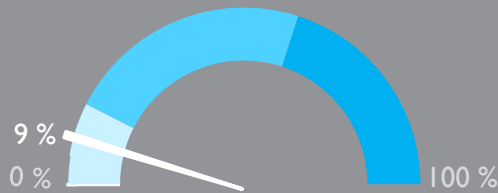
PERFORMANCE AT A GLANCE	3
ON-TIME PERFORMANCE	4
AVERAGE DAILY RIDERSHIP	6
SUMMONSES ISSUED	7
TRAIN UTILIZATION	8
PARKING UTILIZATION	9
FACILITIES UPDATE.....	10
UPCOMING PROCUREMENTS	12
CAPITAL PROJECTS UPDATES	13



VIRGINIA RAILWAY EXPRESS
A better way. A better life.

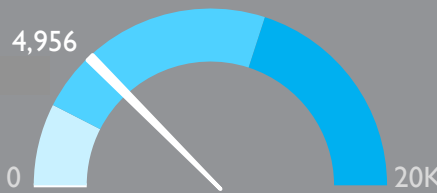


PERFORMANCE AT A GLANCE



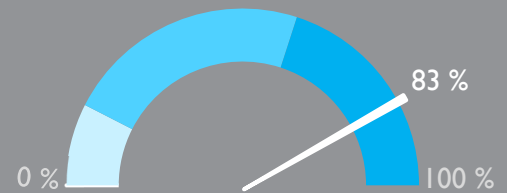
PARKING
UTILIZATION

The total number of parking spaces used in the VRE system during the month, divided by the total number of parking spaces available.



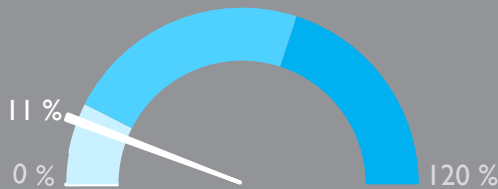
AVERAGE DAILY
RIDERSHIP

The average number of boardings each operating day inclusive of Amtrak Step-Up boardings and reduced, "S" schedule, service.
Same month, previous year: 2,589



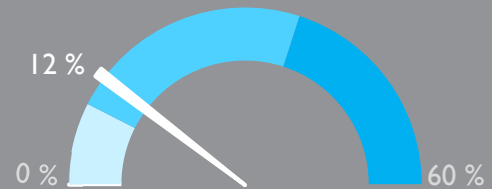
ON-TIME
PERFORMANCE

Percent of trains arriving at their destination within 5 minutes of the schedule.
Same month, previous year: 82%



SYSTEM CAPACITY

The percent of peak hour train seats occupied. The calculation excludes reverse flow and non-peak hour trains.



OPERATING RATIO

Through May 2022

Year-to-date operating revenues divided by year-to-date operating expenses, which represents the share of operating costs paid by the riders.
Board-approved goal: 52%

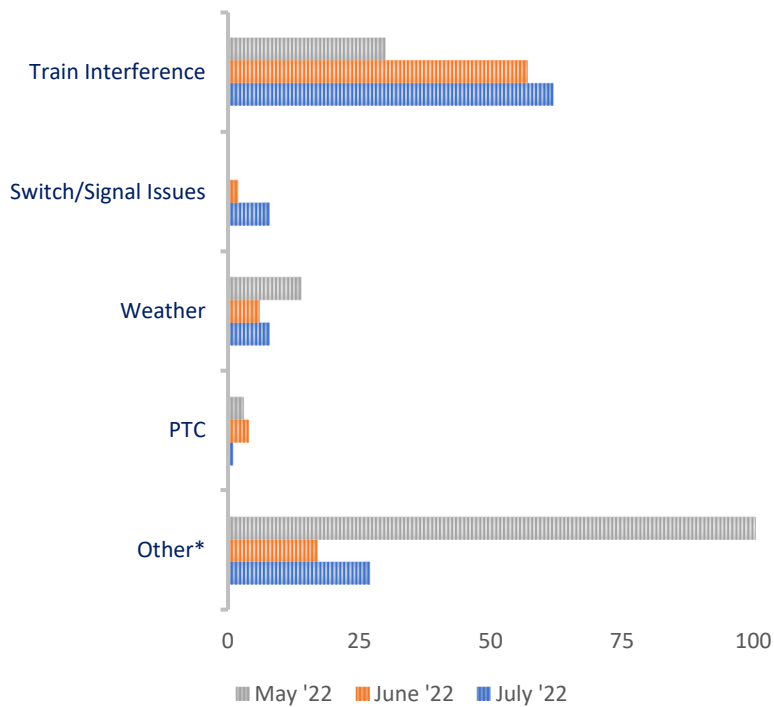
July 2022

ON-TIME PERFORMANCE

OUR RECORD

	July 2022	June 2022	July 2021
Manassas Line	80%	85%	79%
Fredericksburg Line	87%	89%	85%
Systemwide	83%	87%	82%

PRIMARY REASON FOR DELAY



VRE operated 640 trains in July. The on-time rate for July was 83 percent.

One hundred and six trains arrived more than 5 minutes late to their final destinations. Of those late trains, 64 were on the Manassas Line (60 percent), and 42 were on the Fredericksburg Line (40 percent).

On-time performance was down from June with increased delays in nearly every category.

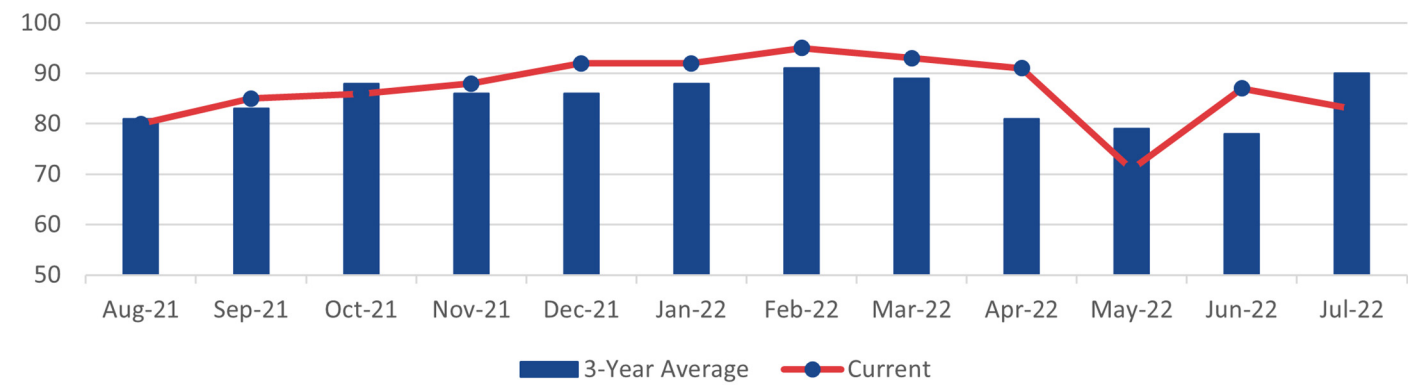
*Includes trains that were delayed due to operational testing and passenger handling.

LATE TRAINS

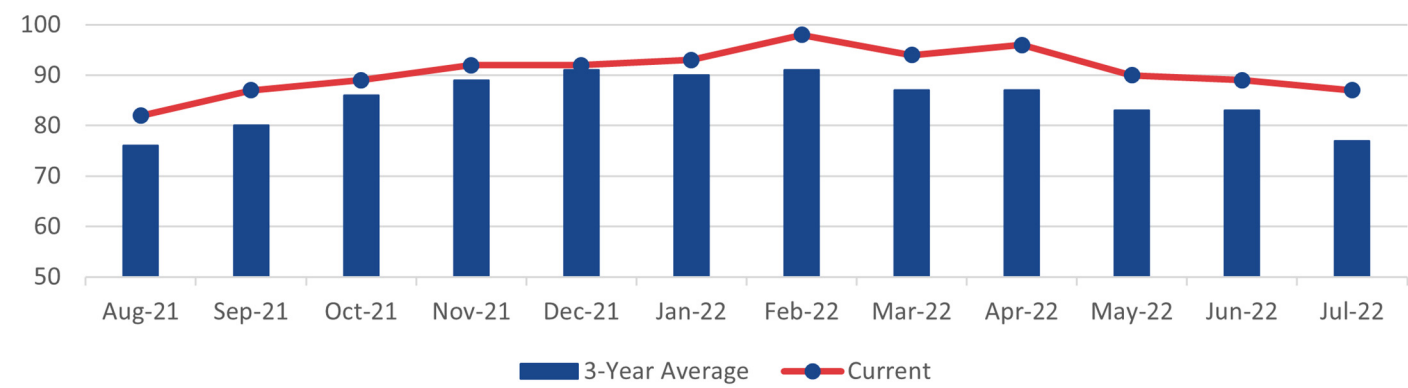
	System Wide			Fredericksburg Line			Manassas Line		
	May	June	July	May	June	July	May	June	July
Total late trains	160	86	106	32	36	42	128	50	64
Average minutes late	19	17	21	14	18	28	20	16	17
Number over 30 minutes	25	8	13	4	3	6	21	5	7
Heat restrictions	7	14	14	7	14	14	0	0	0

ON-TIME PERFORMANCE

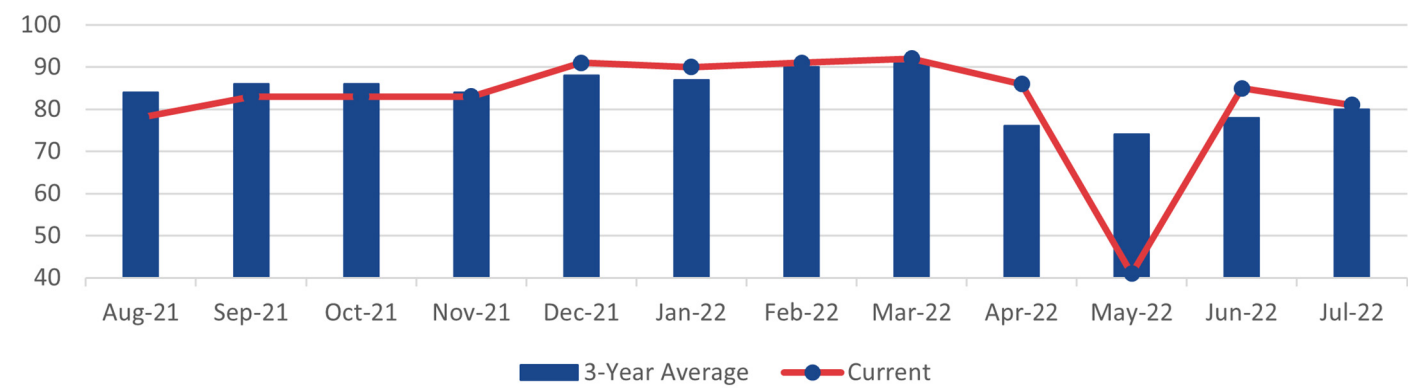
VRE SYSTEM



FREDERICKSBURG LINE

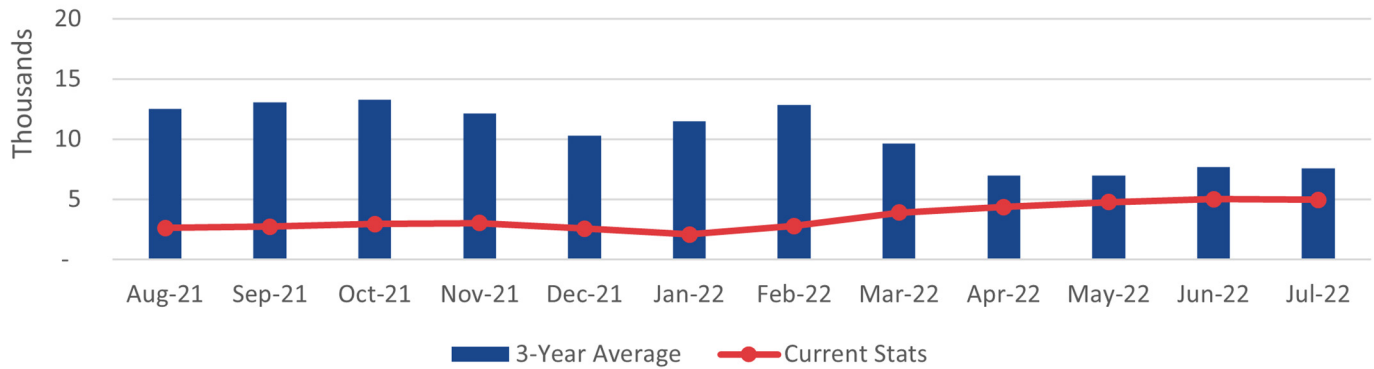


MANASSAS LINE

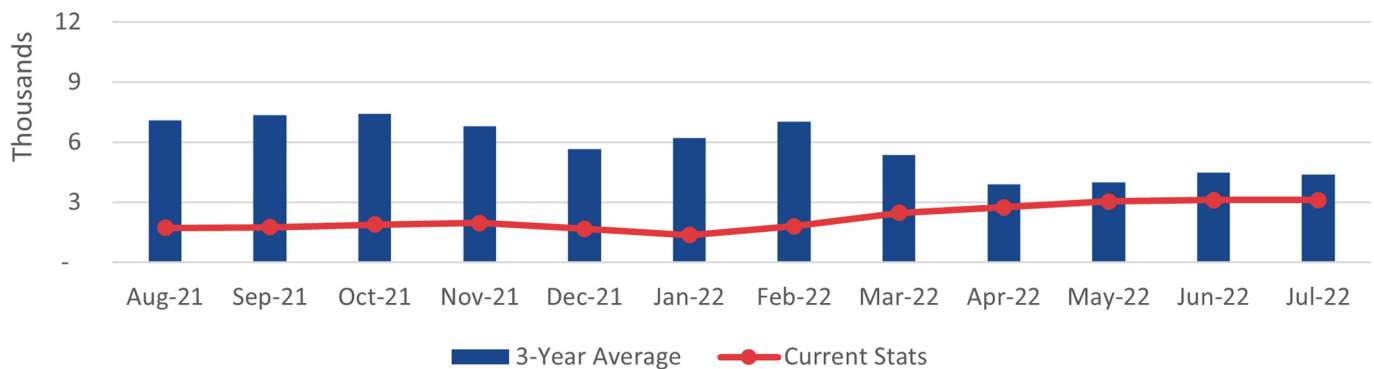


AVERAGE DAILY RIDERSHIP

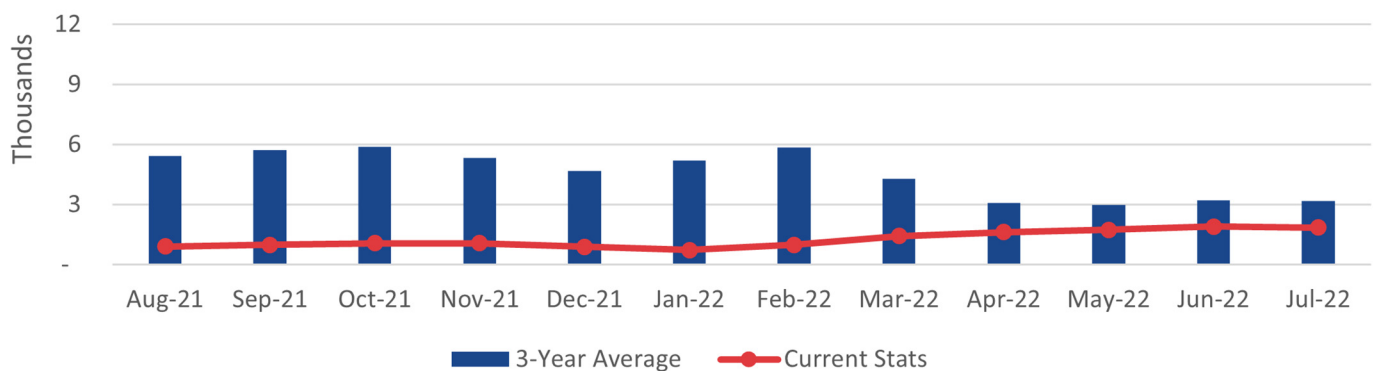
VRE SYSTEM



FREDERICKSBURG LINE



MANASSAS LINE



RIDERSHIP UPDATES

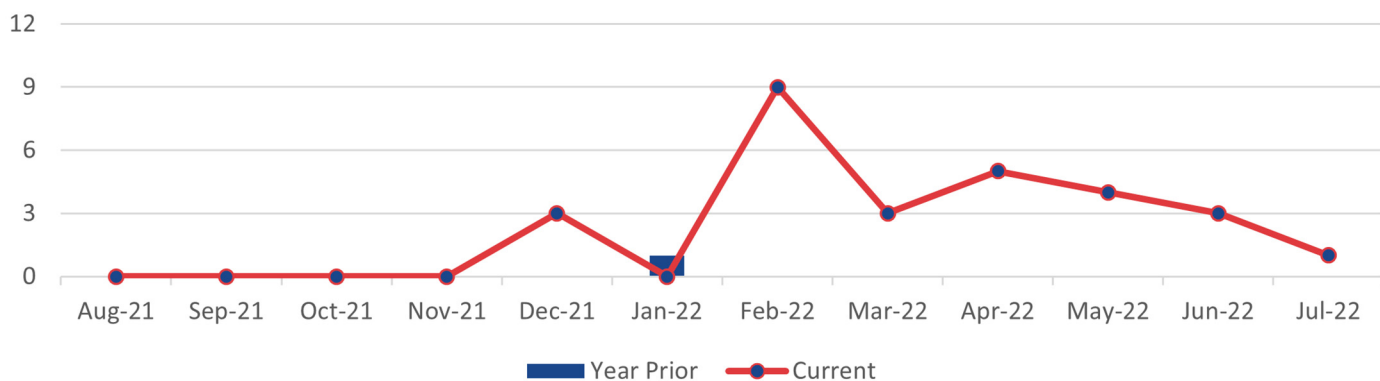
Average daily ridership (ADR) in July was 4,956.
There were 20 service days.

July's ADR was slightly lower than June.

	July 2022	June 2022	July 2021
Monthly Ridership	99,120	110,208	54,379
Average Daily Ridership	4,956	5,009	2,589
Full Service Days	20	21	21
"S" Service Days	0	1	0

SUMMONSES ISSUED

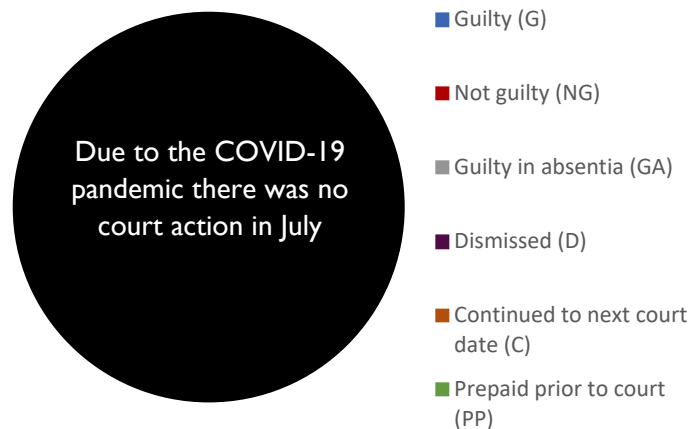
VRE SYSTEM



SUMMONSES WAIVED OUTSIDE OF COURT

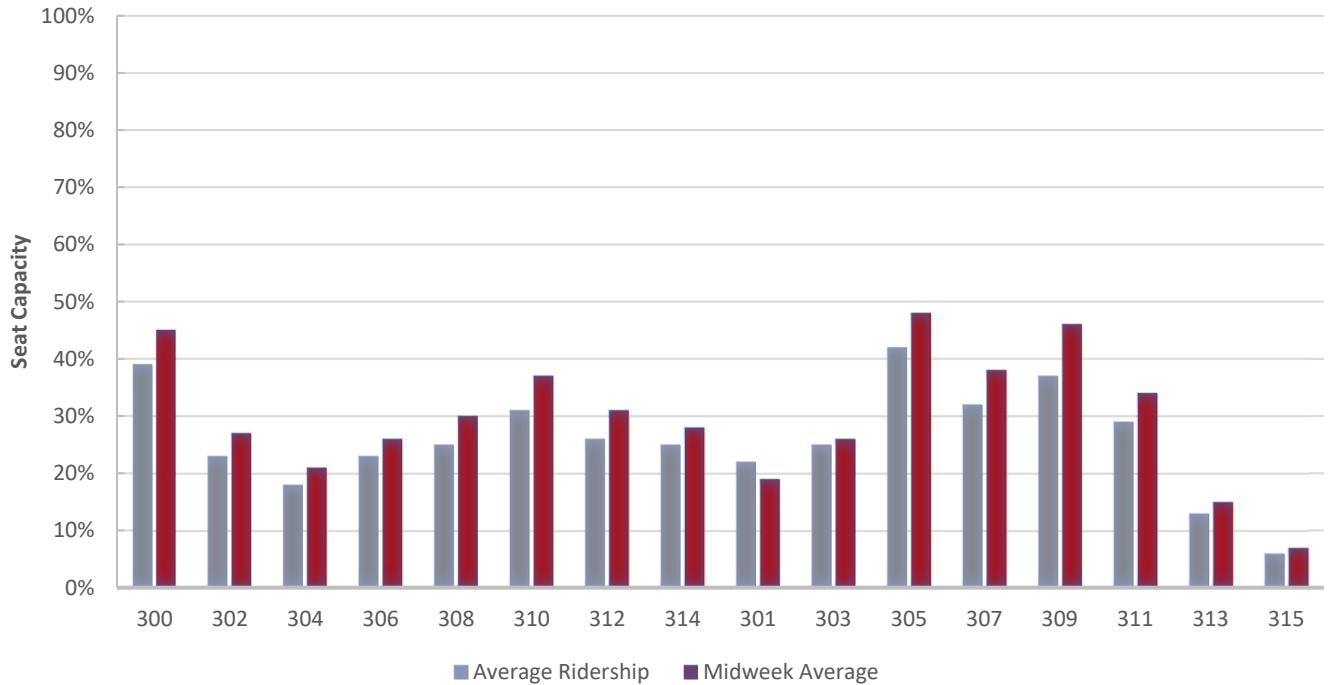
Reason for Dismissal	Occurrences
Passenger showed proof of a monthly ticket	0
One-time courtesy	0
Per the request of the conductor	0
Defective ticket	0
Per ops manager	0
Unique circumstances	0
Insufficient information	0
Lost and found ticket	0
Other	0
Total Waived	0

MONTHLY SUMMONSES COURT ACTION

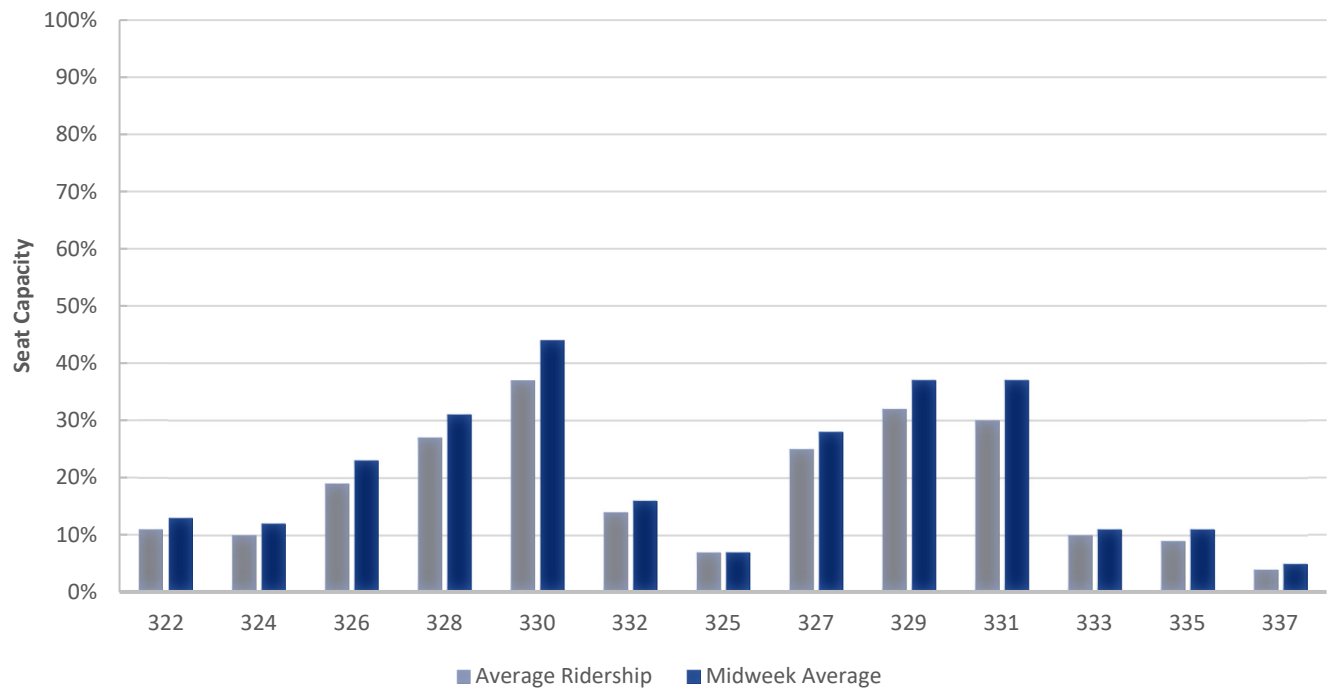


TRAIN UTILIZATION

FREDERICKSBURG LINE

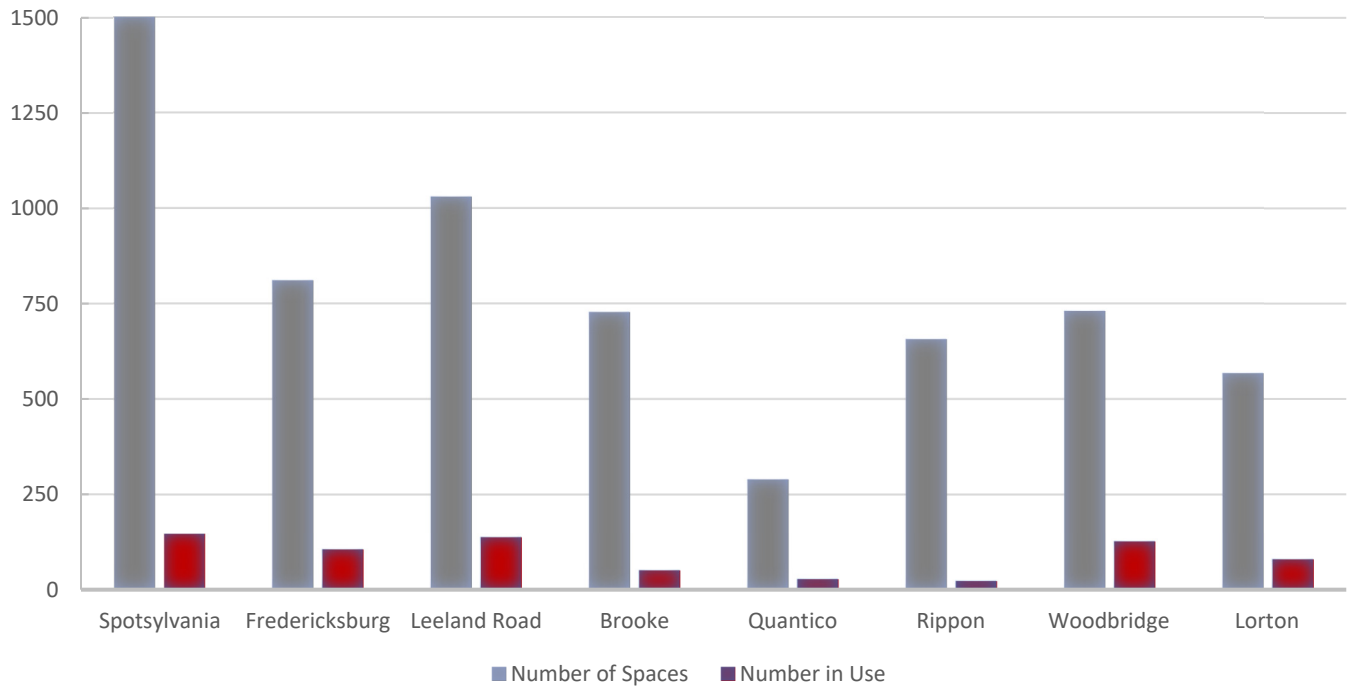


MANASSAS LINE

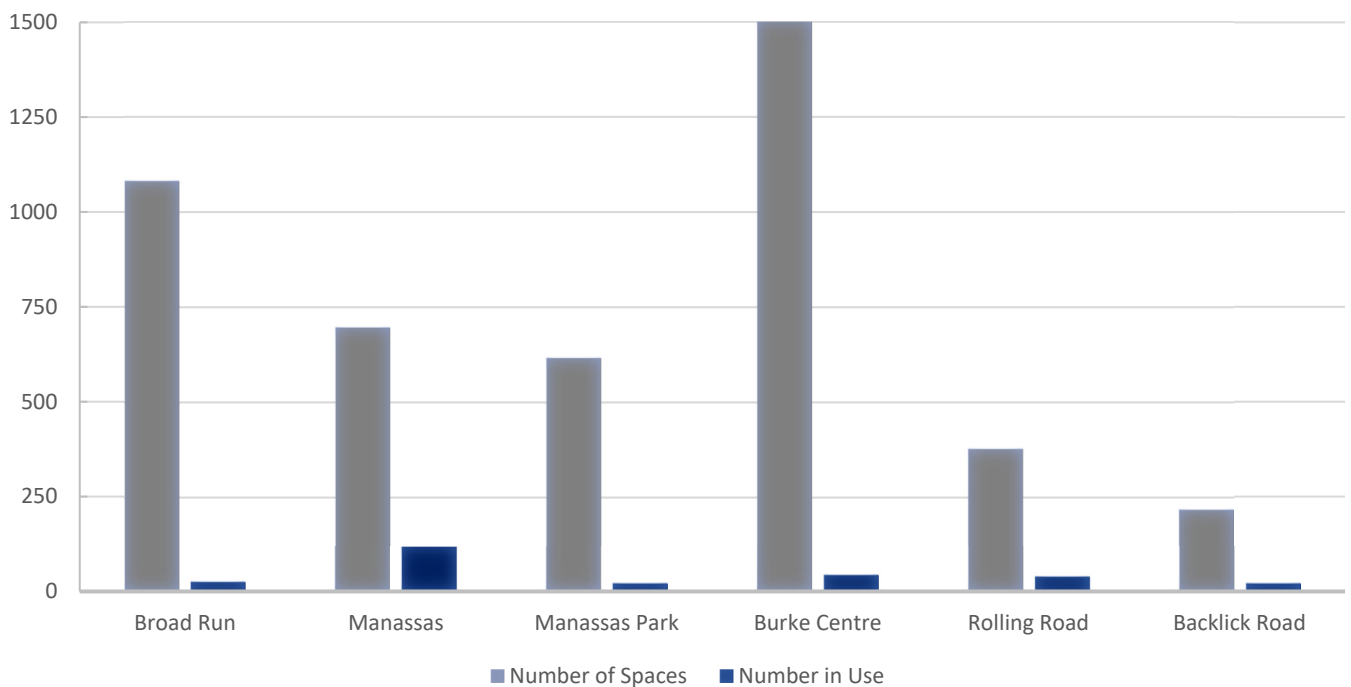


PARKING UTILIZATION

FREDERICKSBURG LINE



MANASSAS LINE



FACILITIES UPDATE

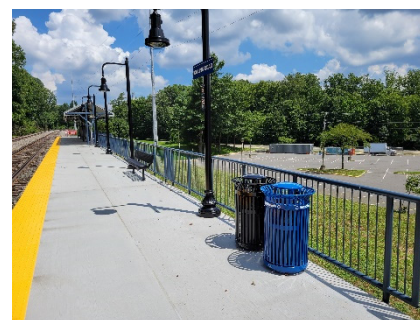
The following is a status update of VRE facilities projects.

Completed projects:

1. Minor repair of concrete stairs at L'Enfant station
2. Painting of Crystal City Station
3. Overhaul of emergency generator at Woodbridge station
4. Replacement of damaged fire extinguisher cabinet at Woodbridge station parking garage
5. Relocation of server room wall at Quantico station
6. Replacement of parking lot privacy fence at Brooke station
7. Restriping of Reserved VRE parking messages at Fredericksburg Lot C
8. Installation of new benches and waste and recycling receptacles for Rolling Road Station Improvements project
9. Replacement of waste and recycling receptacles at Rolling Road station
10. Restriping of portions of Broad Run station parking lots
11. Fabrication of pathfinder signage for Fredericksburg and Spotsylvania stations, for subsequent installation by VDOT



Restriping of Reserved VRE parking messages at Fredericksburg Lot C.



New waste and recycling receptacles at Rolling Road.

Projects scheduled to be completed this quarter:

1. Repair of steel components of ADA lift enclosure at Woodbridge station
2. Replacement of windscreen plexiglass panels at Rippon station
3. Replacement of existing lighting with LED lighting at Fredericksburg Lot G
4. Painting of Alexandria, Rippon and Backlick Road stations
5. Installation of poster display cases for Rolling Road Station Improvements project
6. Replacement of waste and recycling receptacles at various stations

Projects scheduled to be initiated this quarter:

1. Minor repair of concrete at Alexandria station
2. Modernization of east elevator at Woodbridge station
3. Repairs and restriping of parking lots at Woodbridge and Rippon stations
4. Replacement of fluorescent lighting with LED lighting at Fredericksburg office
5. Replacement of ceiling tiles at Fredericksburg office
6. Minor repairs to concrete at Burke Centre station
7. Replacement of existing lighting with LED lighting at Manassas station parking garage
8. Painting of Leeland Road station
9. Installation of additional storage cabinetry at Alexandria headquarters
10. Replacement of benches at various stations
11. Replacement of parking lot entrance signs at various stations

Ongoing projects:

1. Issuance of construction task order for minor structural concrete repairs at Woodbridge station parking garage, pending permit issuance
2. Procurement of construction contract for L'Enfant Station Waiting Area project, pending permit issuance
3. Fabrication of pathfinder signage for various stations, for subsequent installation by VDOT

UPCOMING PROCUREMENTS

1. Renewal of locomotive head end power engine systems
2. Program management consulting services
3. Modernization of VRE Woodbridge Station east elevator
4. Forklift trucks
5. Purchase of LED light fixtures
6. Tactile strip replacements
7. Construction Manager / General Contractor for the Alexandria Station improvements project
8. Broad Run and Crossroads security camera system power and network infrastructure upgrade
9. Station security camera upgrade
10. Locomotive master controllers
11. Construction of Manassas Park Station parking expansion

CAPITAL PROJECTS UPDATE

Project Name	Project Description	Current Phase	Budget	Project Notes
Alexandria Station Improvements	Passenger safety will be improved by replacing an at-grade pedestrian track crossing with elevators to connect the two platforms. The elevators and the current and proposed stairs, will connect to the existing tunnel between the two platforms. Adjustments to platform elevation will eliminate the need for step-boxes to access VRE and Amtrak trains. The center platform will be widened and lengthened to accommodate trains on both tracks.	Final Design	\$ 30,975,014.00	Coordination with CSX Alexandria 4th Track Project (~30% Development) ongoing (August) Permit coordination ongoing with City of Alexandria. (July)
Broad Run Expansion	To accommodate forecasted ridership growth and increase service reliability, improvements are needed at both the Maintenance and Storage Facility (MSF) and station. An enlarged MSF can store longer trains and additional equipment. That requires shifting the existing platform and adding a pedestrian tunnel between the platform and existing and proposed parking lots. A second, 600-space lot and third main track will be constructed.	Final Design	\$ 137,230,000.00	30% redesign submitted for VRE review. Additional fieldwork/borings completed (August) 30% redesign in progress. Additional fieldwork/borings are ongoing. (July 2022)
Brooke Station Improvements	Design and construction of a platform extension up to 700 feet to accommodate full-length VRE trains.	Development	\$ 9,284,208.00	VRE has reengaged this project and returned it to the CIP Budget for future years. Project schedule updates pending input from various stakeholders. (July & August)
Crossroads MSF - Storage Expansion, Short-term	The project constructs additional storage tracks at the Crossroads Maintenance and Storage Facility (MSF) adjacent to the existing facility.	Development	\$ 8,365,765.00	VPRA has signed a LONP, allowing development and design work to proceed. (July & August)
Crystal City Station Improvements	Improved station access and service reliability will result from a new station. The platform at the relocated station will allow for the simultaneous boarding of two full-length trains. The station's design will accommodate a future pedestrian/bicycle connection between the station and the airport.	Development	\$ 50,114,624.00	Stakeholder coordination continues for implementation of the phased design and construction approach, which was presented at the April Operations Board meeting. (July & August)
Facilities Design Guidelines Update	Update to the 2019 VRE Facility Design Guidelines.	Final Design	\$ 80,000.00	Circulating review copies of text document and plans for final departmental review prior to delivery to consultant (Aug.). Revised draft drawing package received and being reviewed by VRE. (July)
Franconia-Springfield Station Improvements	Extended platforms will be able to accommodate eight-car trains, eliminating the need for passengers near the rear to move to a different railcar when disembarking. Enhanced passenger safety and reduced station dwell times will result. The longer platforms will increase operational flexibility and capacity. The design will allow for a future third mainline track.	Final Design	\$ 13,000,000.00	NEPA process underway for pedestrian tunnel. Platform design being reviewed to determine updates necessary to accommodate pedestrian tunnel. (August) Task order issued for design of a pedestrian tunnel. (July)

- continued next page -

CAPITAL PROJECTS UPDATE

Project Name	Project Description	Current Phase	Budget	Project Notes
Fredericksburg Station Rehabilitation	The rehabilitation of platforms, stairs and bridges will improve passenger safety and better accommodate the boarding and disembarking of riders from VRE and Amtrak trains. New stairs will allow passengers to move between the platform and a parking lot without crossing the street at grade level. New signage, sidewalks, lighting and paint are included, as is installation of a low-clearance warning sign to a bridge that has experienced numerous vehicle strikes.	Final Design	\$ 3,000,000.00	Board authorized contract execution in July (August) Project is in the bid/award phase. Construction bids were received June 28. Anticipate going to July Operations Board meeting for authorization to execute. (July)
HQ Office Renovations	The project will improve employee safety and security and maximize workspace efficiency at VRE Headquarters, and will include modifications to kitchen, supply room, mail room, bathroom/shower, office and cubicle areas in the north and south wings. The east wing will be modified to include additional offices.	Construction	\$ 250,000.00	Executed task order to install additional cabinetry in reception area and break room. (August) Additional cubicle workstation for Suite 201 open area installed on June 23 (July)
Leeland Road Parking Improvements	This project will expand the surface parking lot at the Leeland Road station by approximately 225 spaces to accommodate future demand.	Development	\$ 5,519,178.00	The project is funded through Virginia SMART SCALE. Funding is allocated for FY20 and 22. A funding agreement is pending. (July & August))
Leeland Road Station Improvements	Design and construction of a platform extension to accommodate full-length VRE trains.	Development	\$ 6,736,091.00	VRE has reengaged this project and returned it to the CIP budget for future years. Project schedule updates pending input from various stakeholders. (July & August)
L'Enfant Station Waiting Area	The existing platform at the L'Enfant station experiences overcrowding during the evening service period. The proposed project will create an additional paved area behind the existing platform, currently landscaped with shrubs and grass, for riders to wait for trains or to bypass riders waiting on the platform.	Final Design	\$ 350,000.00	Site meeting with soil boring contractor to address District DOEE permit requirement to be scheduled. (August) Soil borings required by District DOEE to check for bedrock or groundwater within two feet of pavement. Consultant to schedule borings. (July 2022)
L'Enfant Track and Station Improvements	Expansion of the VRE L'Enfant Station to provide two platform edges and serve full-length trains. Add a new mainline track between LE and VA interlockings.	Development	\$ 79,980,000.00	A property boundary and topographical survey is complete. Alternatives analysis and concept design to define a preferred alternative scheduled to be complete in Sept. 2022 (July & August)

- continued next page -

CAPITAL PROJECTS UPDATE

Project Name	Project Description	Current Phase	Budget	Project Notes
Lifecycle Overhaul and Upgrade (LOU) Facility	Featuring 33,000 square feet of maintenance space, the LOU will allow VRE to cost-effectively maintain rolling stock, as well as systems and components, in a state of good repair. It will optimize maintenance and reduce costs by allowing the in-house replacement of items before they fail. The LOU will house two tracks that can hold up to four cars at one time and be equipped with a drop table and wheel truing machine. To maintain storage capacity within Crossroads Yard three new tracks are being constructed to provide enhanced flexibility to our operations crews for train movements and storage.	Construction	\$ 52,183,632.00	Final segment of shop floor concrete placed. All (28) 50-ft high steel columns were erected. Topping out ceremony to be held later this month. (August) Contractor to finish concrete placement this month for the shop floor slab with building steel erection to follow later next month. (July)
Manassas Park Parking Expansion	A new garage will nearly double the 600 spaces currently available in the existing surface lot. A pedestrian bridge will provide grade-separated access to the existing platform and lot. The VRE station and garage are an integral part of the City Center Redevelopment District, the proposed transit-accessible high-density mixed-use town center of Manassas Park.	Final Design	\$ 25,983,000.00	Building plan review comments addressed. 3rd site plan submitted to city. Waiting on a response from city. (August) Building plan review comments are being addressed. Third site plan submitted to city. (July)
Manassas Station Improvements	The project expands the VRE Manassas Station platform to serve full length trains and enhances pedestrian access to the station. Alternatives to increase the platform length to enable boarding and alighting from all passenger cars will be evaluated.	Development	\$ 9,125,000.00	This project is funded with I-66 OTB funding. Initiation of project planning pending completion of a Force Account Addendum with Norfolk Southern Railway. (July & August)
New York Avenue Midday Storage Facility	This new facility will store trains currently located in Amtrak's Ivy City coach yard, as Amtrak now has need for the storage tracks. The New York Avenue site, which is proximate to Washington Union Station, will be able to accommodate additional VRE trains.	Development	\$ 89,666,508.00	Returned letter of intent to Amtrak. Hoping to receive draft versions of design review agreements from Amtrak soon. (August) VRE is coordinating with Amtrak on design support agreements, which will be necessary to proceed to final design stage. (July)
Potomac Shores Station	This new station, in a master-planned community in Prince William County, is being funded, designed, and constructed by the developer of Potomac Shores in consultation with VRE and other stakeholders. The station will be just a short walk from the town center. A new side platform will be constructed which is designed to be converted into an island platform in the future when the 3rd track is added to corridor operations.	Final Design	\$ -	VPRA, CSX, and VRE comments being incorporated into final 100% plans for pre-final review cycle. Geotech concerns and excess spoil disposal driving design option investigation. (July & August)

- continued next page -

CAPITAL PROJECTS UPDATE

Project Name	Project Description	Current Phase	Budget	Project Notes
Quantico Station Improvements	Service and safety will be enhanced through the construction of a new center platform, ADA-compliant pedestrian bridges, existing platform extension, and third track. These improvements will allow the station to accommodate additional passengers and more frequent and longer trains and operations flexibility with three boardable platform edges.	Construction	\$ 23,973,061.00	Soil nail wall started. Test nails installed. Mat slab 1 in process. Platform 2 progressing. Structural steel for towers being installed. (August) Retaining wall H pile installation complete. Soil nail wall to start this month. Mat slab 2 and 1 in process. Structural steel for towers being installed. (July)
Rippon Station Improvements	Extend existing platform with a second pedestrian overpass.	Development	\$ 16,634,794.00	VRE has reengaged this project and returned it to the CIP budget for future years. Project schedule updates pending input from various stakeholders. (June & July 2022)
Rolling Road Station Improvements	An extended platform will accommodate eight-car trains, eliminating the need for passengers near the rear to move to a different railcar when disembarking. Enhanced passenger safety and reduced station dwell times will result. Rehabilitation and repair of the existing platform, replacement of stairs and the existing canopy roof, and an upgrade of the lighting and communication systems are planned.	Construction	\$ 5,000,000.00	Final site work is complete. Existing platform repairs are ongoing. (August) Final site work in progress. Existing platform repairs are ongoing (July)

For more information about VRE capital projects, visit <https://projects.vre.org/list>



VIRGINIA RAILWAY EXPRESS

1500 KING STREET, SUITE 202 • ALEXANDRIA, VA 22314 • 703.684.1001

VRE.ORG

