

CEO REPORT

JANUARY 2022



OUR MISSION

The Virginia Railway Express, a joint project of the Northern Virginia Transportation Commission and the Potomac Rappahannock Transportation Commission, will provide safe, cost-effective, accessible, reliable, convenient, and customer responsive commuter-oriented rail passenger service. VRE contributes to the economic vitality of its member jurisdictions as an integral part of a balanced, intermodal regional transportation system.



CEO REPORT | JANUARY 2022

TABLE OF CONTENTS

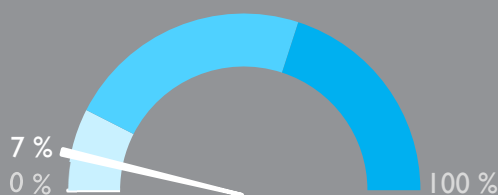
PERFORMANCE AT A GLANCE	3
ON-TIME PERFORMANCE	4
AVERAGE DAILY RIDERSHIP	6
SUMMONSES ISSUED	7
TRAIN UTILIZATION	8
PARKING UTILIZATION	9
FACILITIES UPDATE.....	10
UPCOMING PROCUREMENTS	11
CAPITAL PROJECTS UPDATES	12



VIRGINIA RAILWAY EXPRESS
A better way. A better life.

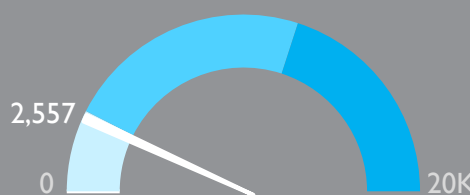


PERFORMANCE AT A GLANCE



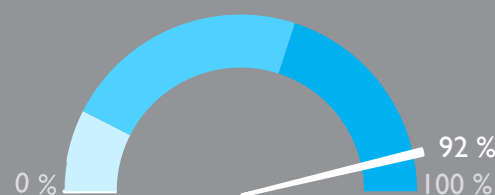
PARKING UTILIZATION

The total number of parking spaces used in the VRE system during the month, divided by the total number of parking spaces available.



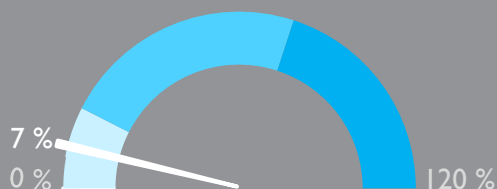
AVERAGE DAILY RIDERSHIP

The average number of boardings each operating day inclusive of Amtrak Step-Up boardings and reduced, "S" schedule, service.
Same month, previous year: 1,057



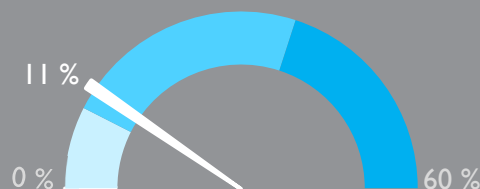
ON-TIME PERFORMANCE

Percent of trains arriving at their destination within 5 minutes of the schedule.
Same month, previous year: 96%



SYSTEM CAPACITY

The percent of peak hour train seats occupied. The calculation excludes reverse flow and non-peak hour trains.



OPERATING RATIO

Through November 2021

Year-to-date operating revenues divided by year-to-date operating expenses, which represents the share of operating costs paid by the riders.
Board-approved goal: 52%

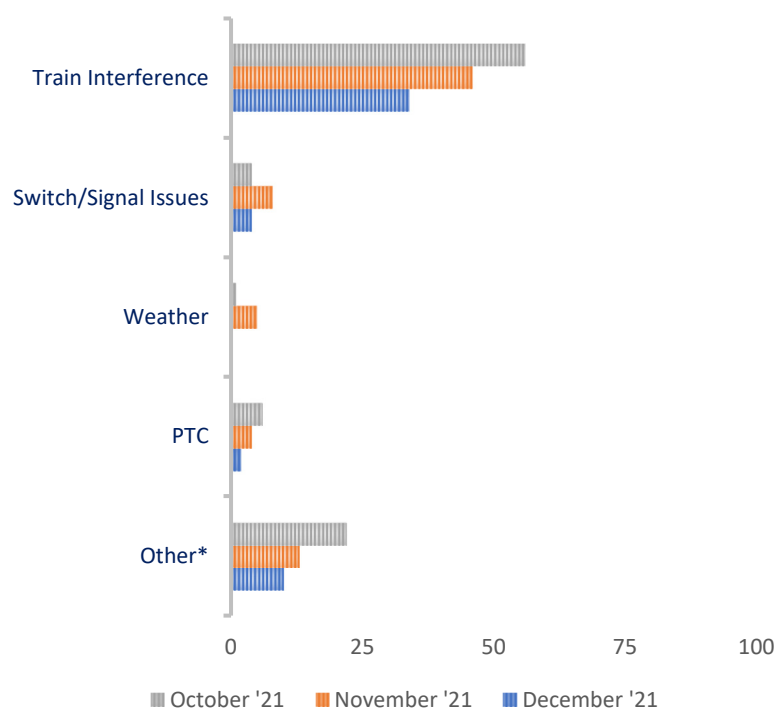
December 2021

ON-TIME PERFORMANCE

OUR RECORD

	December 2021	November 2021	December 2020
Manassas Line	91%	83%	97%
Fredericksburg Line	92%	92%	96%
Systemwide	92%	88%	96%

PRIMARY REASON FOR DELAY



VRE operated 608 trains in December. The on-time rate for December was 92 percent.

Fifty trains arrived more than 5 minutes late to their final destinations. Of those late trains, 27 were on the Manassas Line (53 percent), and 23 were on the Fredericksburg Line (47 percent).

We met our goal on both lines this month due to reductions in all categories of delay.

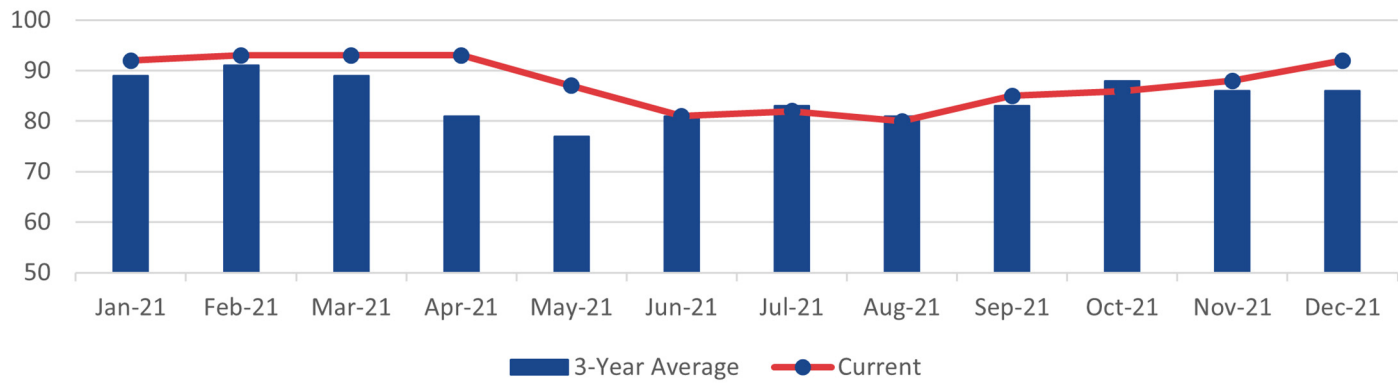
*Includes trains that were delayed due to operational testing and passenger handling.

LATE TRAINS

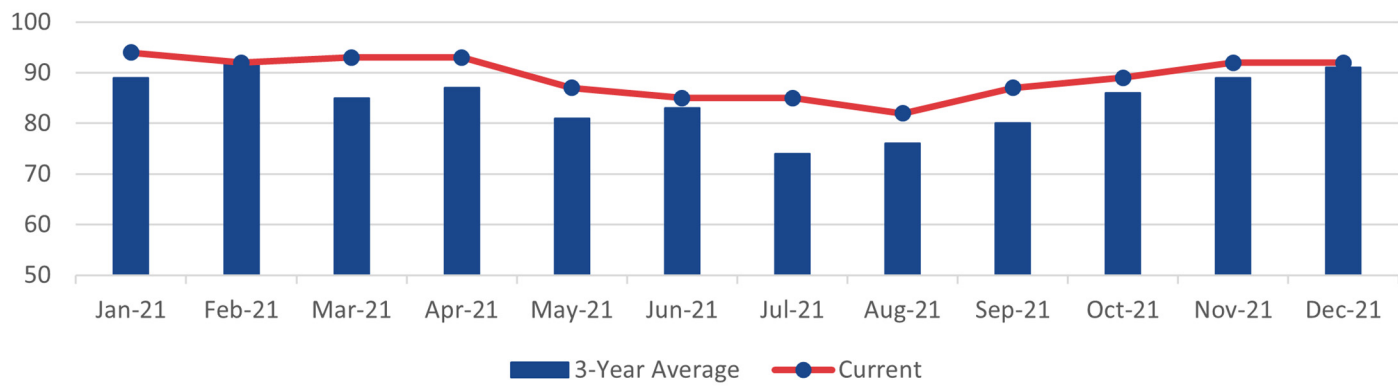
	System Wide			Fredericksburg Line			Manassas Line		
	Oct.	Nov.	Dec.	Oct.	Nov.	Dec.	Oct.	Nov.	Dec.
Total late trains	89	76	50	36	24	23	53	52	27
Average minutes late	25	12	14	27	12	18	24	11	11
Number over 30 minutes	23	3	6	10	2	5	13	1	1
Heat restrictions	0	0	0	0	0	0	0	0	0

ON-TIME PERFORMANCE

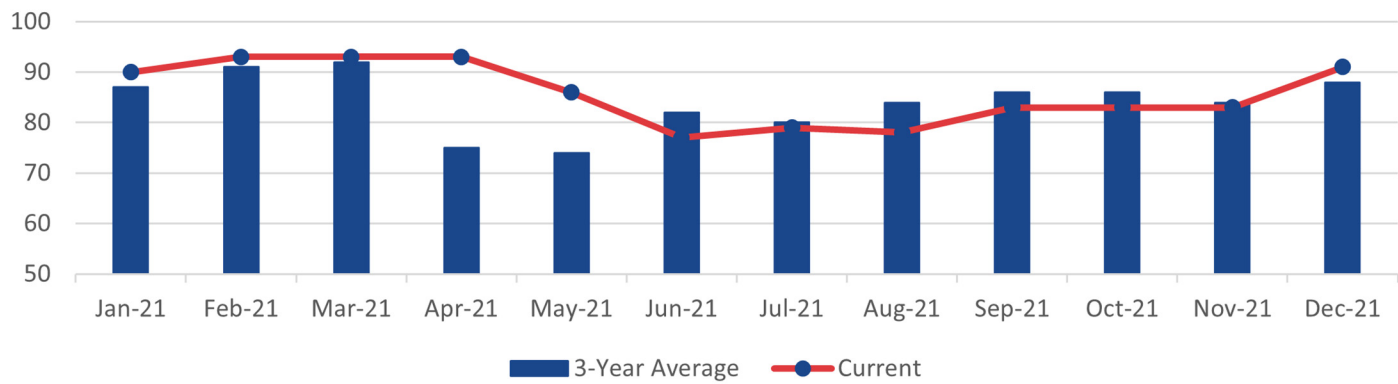
VRE SYSTEM



FREDERICKSBURG LINE

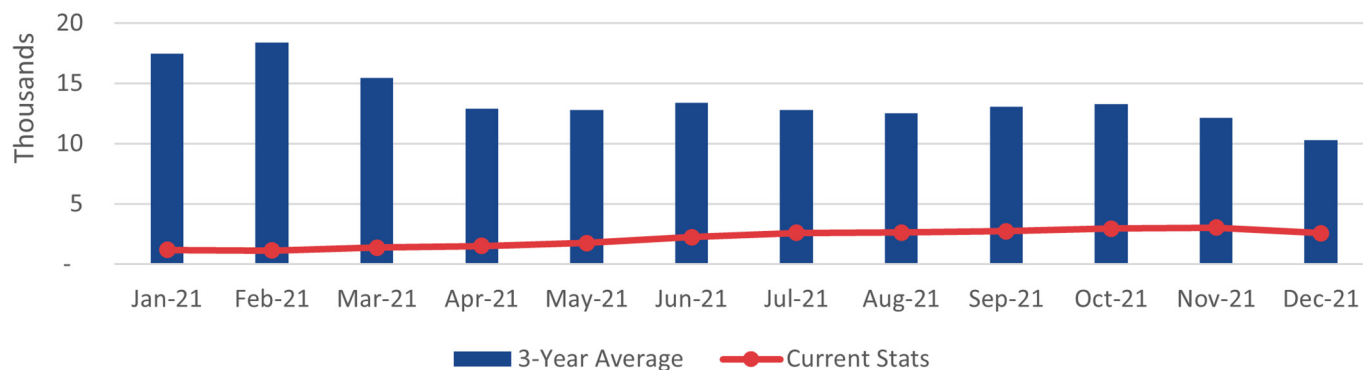


MANASSAS LINE

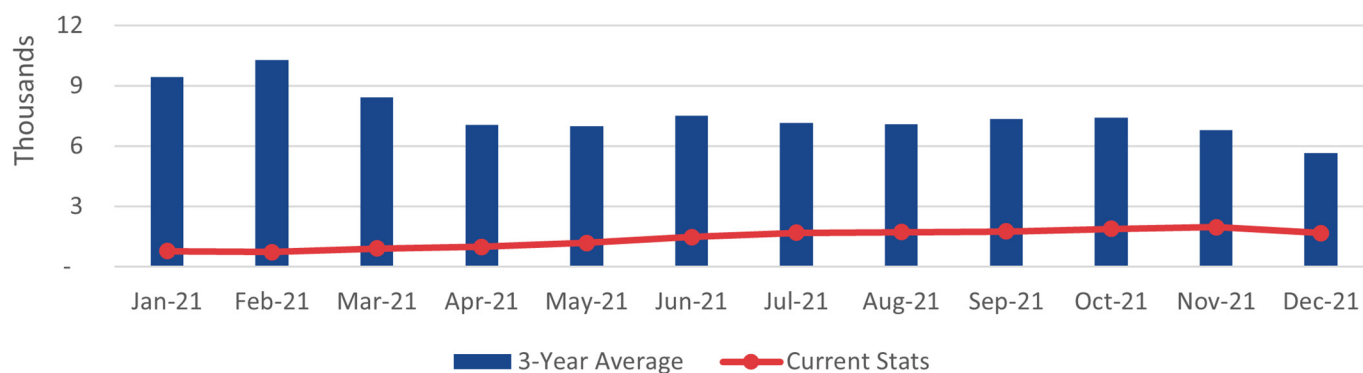


AVERAGE DAILY RIDERSHIP

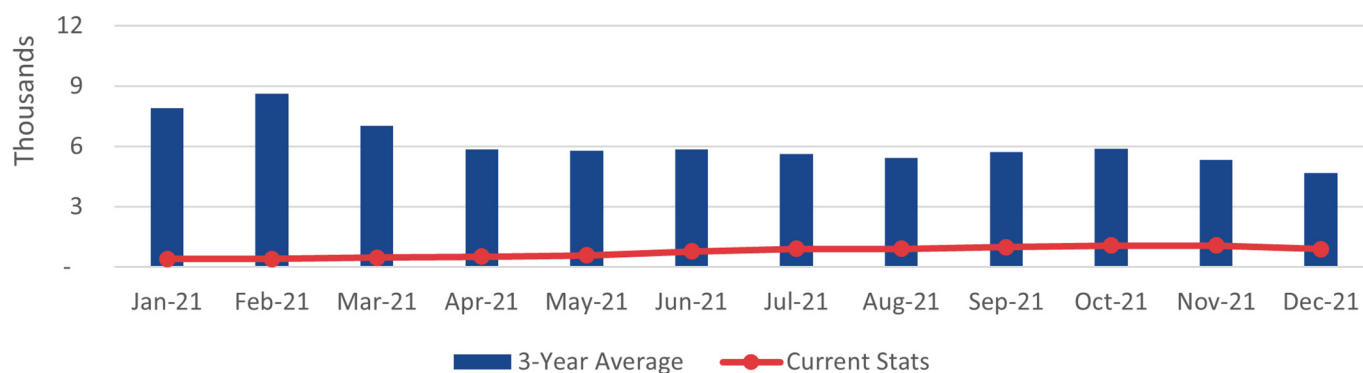
VRE SYSTEM



FREDERICKSBURG LINE



MANASSAS LINE



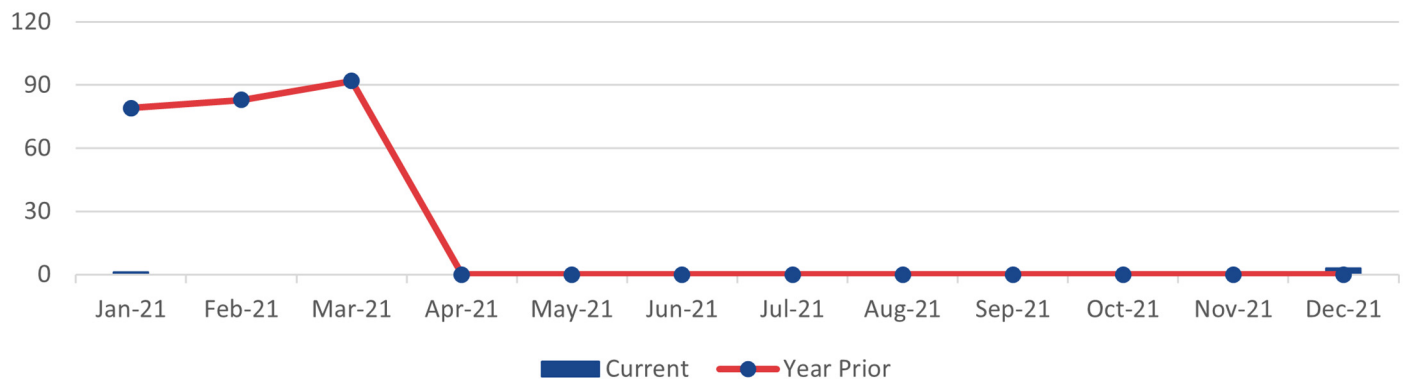
RIDERSHIP UPDATES

Average daily ridership in December was 2,557. December had 21 service days. VRE operated 17 full-service and four S Schedule days the week following Christmas. Ridership levels fell from previous months, which is typical for December.

	December 2021	November 2021	December 2020
Monthly Ridership	53,692	57,688	22,190
Average Daily Ridership	2,557	3,036	1,057
Full Service Days	17	19	17
"S" Service Days	4	0	4

SUMMONSES ISSUED

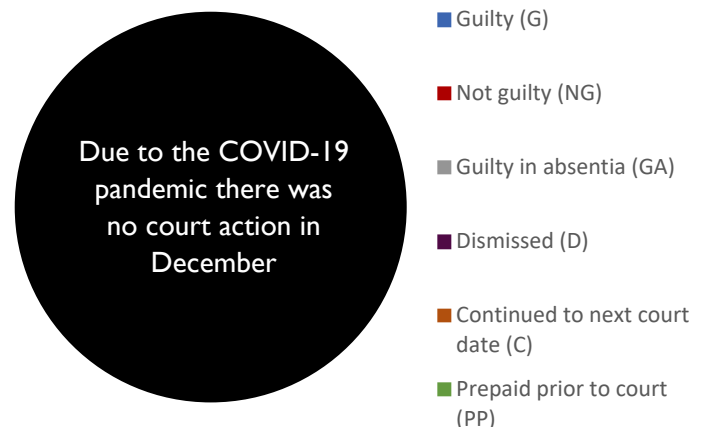
VRE SYSTEM



SUMMONSES WAIVED OUTSIDE OF COURT

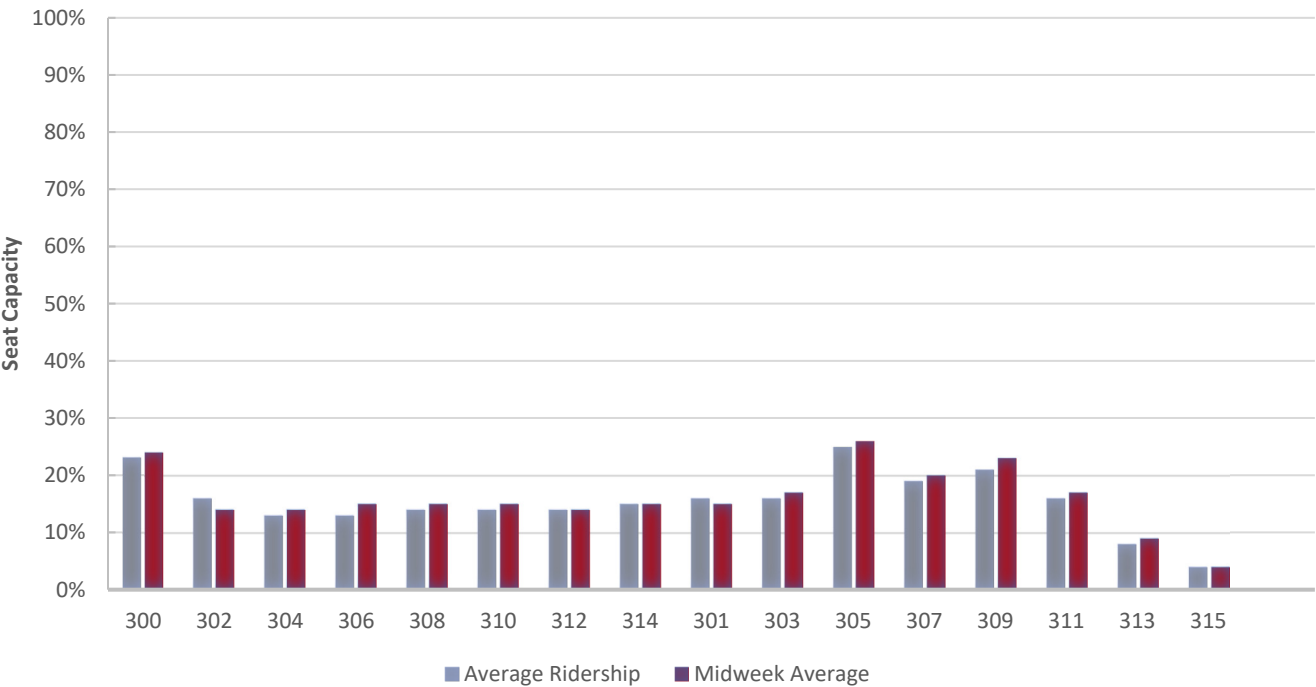
Reason for Dismissal	Occurrences
Passenger showed proof of a monthly ticket	0
One-time courtesy	0
Per the request of the conductor	0
Defective ticket	0
Per ops manager	0
Unique circumstances	0
Insufficient information	0
Lost and found ticket	0
Other	0
Total Waived	0

MONTHLY SUMMONSES COURT ACTION

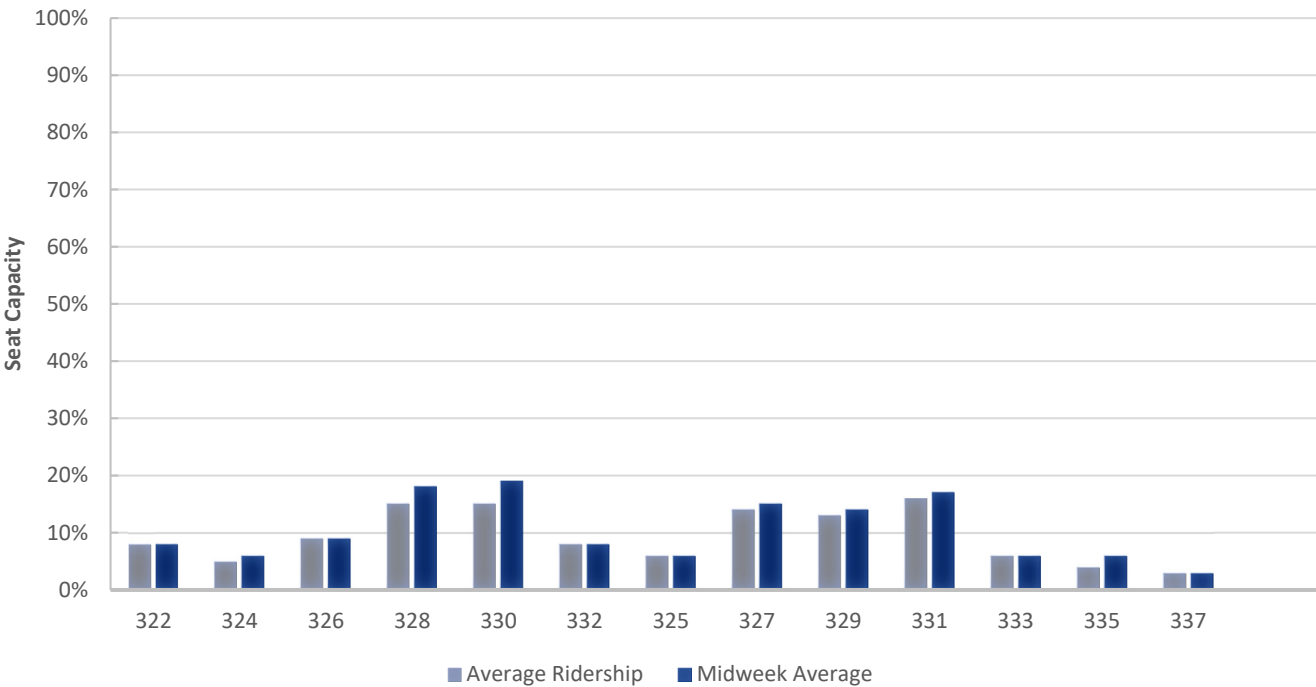


TRAIN UTILIZATION

FREDERICKSBURG LINE

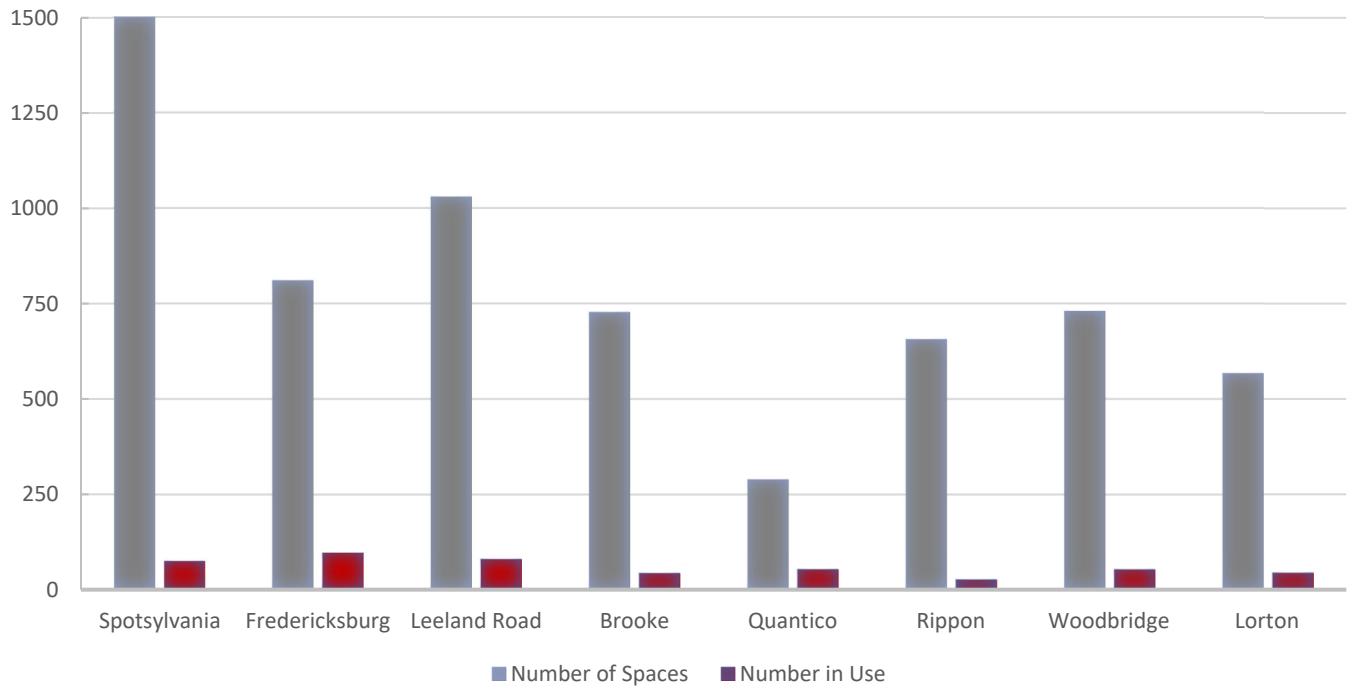


MANASSAS LINE

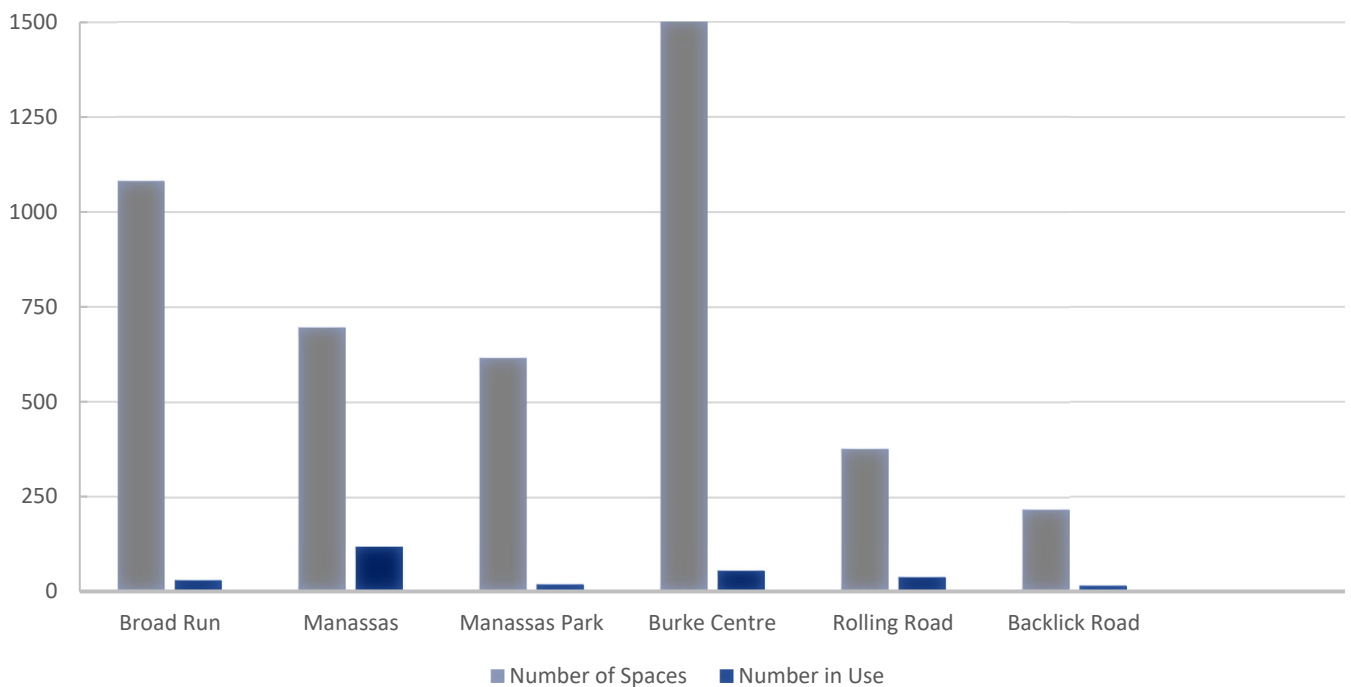


PARKING UTILIZATION

FREDERICKSBURG LINE



MANASSAS LINE



FACILITIES UPDATE

The following is a status update of VRE facilities projects.

Completed projects:

1. Replacement of ceiling tiles at Alexandria headquarters Suite 201
2. Delivery of air purifiers to Alexandria headquarters
3. Reposting of RFQ for waste and recycling receptacles for station platforms



Installation of cubicle furniture at headquarters

Projects scheduled to be completed this quarter:

1. Design of waiting area at L'Enfant station
2. Replacement of existing west platform and canopy lighting with LED lighting at Woodbridge station
3. Replacement of fluorescent lighting with LED lighting at Alexandria headquarters and Fredericksburg office
4. Overhaul of emergency generator at Fredericksburg office
5. Replacement of vertical blinds with window shades at Alexandria headquarters
6. Delivery of air purifiers to Fredericksburg office, Crossroads MASF buildings and Broad Run MASF buildings
7. Installation of VRE station-themed wall graphics in Alexandria headquarters elevator lobby
8. Issuance of sole source contract for continued Roadway Worker Protection (RWP) railroad safety training services



Air purifiers for offices and maintenance and storage facilities

Projects scheduled to be initiated this quarter:

1. Submission of invitation for bids package for waiting area at L'Enfant station
2. Minor structural concrete repairs at Woodbridge station parking garage
3. Modernization of east elevator at Woodbridge station
4. Minor structural concrete bridge repairs at Rippon and Brooke stations
5. Repair of platform sealer delamination at Spotsylvania station
6. Repair of concrete stairs at Burke Centre station
7. Replacement of existing lighting with LED lighting at Manassas station parking garage

Projects scheduled to be initiated this quarter (*continued*)

8. Replacement of existing yard lighting with LED lighting at Crossroads MASF and Broad Run MASF
9. Issuance of general signage services request for quotes

Ongoing projects:

1. Overhaul of emergency generators at Woodbridge and Manassas stations, Alexandria headquarters and Fredericksburg office
2. Procurement of waste and recycling receptacles for station platforms
3. Procurement of benches for station platforms

UPCOMING PROCUREMENTS

1. Locomotive Master Controller
2. Renewal of locomotive head end power engine systems
3. Program management consulting services
4. Modernization of VRE Woodbridge Station east elevator
5. Forklift trucks
6. Passenger car wheelchair lift assemblies
7. Purchase of LED light fixtures
8. Variable Messaging System replacement
9. Tactile strip replacements
10. Construction of Fredericksburg Station platform rehabilitation
11. Construction Manager / General Contractor for the Alexandria Station improvements project
12. Broad Run and Crossroads security camera system power and network infrastructure upgrade

CAPITAL PROJECTS UPDATE

Project Name	Project Description	Current Phase	Budget	Project Notes
Alexandria Station Improvements	Passenger safety will be improved by replacing an at-grade pedestrian track crossing with elevators to connect the two platforms. The elevators, along with the current and proposed stairs, will connect to the existing tunnel between the two platforms. Adjustments to platform elevation will eliminate the need for step-boxes to access VRE and Amtrak trains. The center platform will be widened and lengthened to accommodate trains on both tracks.	Final Design	\$ 30,975,014.00	Permit coordination ongoing with the City of Alexandria.
Broad Run Expansion	To accommodate forecasted ridership growth and increase service reliability, improvements are needed at both the Maintenance and Storage Facility (MSF) and station. The MSF will be enlarged to store longer trains and additional equipment. That will require shifting the existing platform to the east and adding a pedestrian tunnel between the platform and the existing and proposed parking lots. A second, 600-space parking lot and third main track will also be constructed.	Final Design	\$ 137,230,000.00	Final design in progress. Norfolk Southern right of entry completed.
Brooke Station Improvements	Design and construction of a platform extension up to 700 feet to accommodate full-length VRE trains.	Development	\$ 9,284,208.00	VRE has reengaged this project and returned it to the CIP Budget for future years. Project schedule updates pending input from various stakeholders
Crossroads MSF - Storage Expansion, Short-term	The project constructs additional storage tracks at the Crossroads Maintenance and Storage Facility (MSF) adjacent to the existing facility.	Development	\$ 8,365,765.00	SMART SCALE funding for this project is allocated in FY 2022 and 2023. A funding ageement is pending.
Crystal City Station Improvements	Improved station access and service reliability will result from construction of a new, expanded station. The platform at the relocated station will allow for the simultaneous boarding of two full-length trains. The station's design will accommodate a future pedestrian/bicycle connection between the station and Ronald Reagan National Airport.	Development	\$ 50,114,624.00	On December 9, 2021 the Federal Transit Administration determined the Crystal City Station Replacement Project meets the criteria of a Class II listed Categorical Exclusion. Notice to proceed for final design was issued in early January.
Facilities Design Guidelines Update	Update to the 2019 VRE Facility Design Guidelines.	Final Design	\$ 80,000.00	Reviewing consultant's initial draft drawing submission
Franconia-Springfield Station Improvements	Extended platforms will be able to accommodate eight-car trains, eliminating the need for passengers near the rear to move to a different railcar when disembarking. Enhanced passenger safety and reduced station dwell times will result. The longer platforms will increase operational flexibility and capacity. The design will allow for a future third mainline track.	Final Design	\$ 13,000,000.00	VRE is performing an underground utility investigation for the pedestrian tunnel. The platform design is on hold pending tunnel investigation.

- continued next page -

CAPITAL PROJECTS UPDATE

Project Name	Project Description	Current Phase	Budget		Project Notes
Fredericksburg Station Rehabilitation	The rehabilitation of platforms, stairs and bridges will improve passenger safety and better accommodate the boarding and disembarking of riders from VRE and Amtrak trains. New stairs will allow passengers to move between the platform and a parking lot without crossing the street at grade level. New signage, sidewalks, lighting and paint are included, as is installation of a low-clearance warning sign to a bridge that has experienced numerous vehicle strikes.	Final Design	\$	3,000,000.00	Invitation for bids package complete; finalizing agreements
HQ Office Renovations	The project will improve employee safety and security and maximize workspace efficiency at VRE Headquarters, and will include modifications to kitchen, supply room, mail room, bathroom/shower, office and cubicle areas in the north and south wings. The east wing will be modified to include additional offices.	Construction	\$	250,000.00	Replacement of ceiling tiles 90 percent complete. LED ceiling light fixtures on order.
Leeland Road Parking Improvements	This project will expand the surface parking lot at the Leeland Road station by approximately 225 spaces to accommodate future demand.	Development	\$	5,519,178.00	The project is funded through Virginia SMART SCALE. Funding is allocated for FY20 and 22. A funding agreement is pending.
Leeland Road Station Improvements	Design and construction of a platform extension to accommodate full-length VRE trains.	Development	\$	6,736,091.00	VRE has reengaged this project and returned it to the CIP budget for future years. Project schedule updates pending input from various stakeholders.
L'Enfant Station Waiting Area	The existing platform at the L'Enfant station experiences overcrowding during the evening service period. The proposed project will create an additional paved area behind the existing platform, currently landscaped with shrubs and grass, for riders to wait for trains or to bypass riders waiting on the platform.	Final Design	\$	350,000.00	Sediment control and stormwater permit applications remain under review by the District Department of Energy and Environment. VRE paid review fees the week of January 10, 2022.
L'Enfant Track and Station Improvements	Expansion of the VRE L'Enfant Station to provide two platform edges and serve full-length trains. Add a new mainline track between LE and VA interlockings.	Development	\$	79,980,000.00	A property boundary and topographical survey is underway. Alternatives analysis and concept design to define a preferred alternative initiated.

- continued next page -

CAPITAL PROJECTS UPDATE

Project Name	Project Description	Current Phase	Budget	Project Notes
Lifecycle Overhaul and Upgrade (LOU) Facility	Featuring 33,000 square feet of maintenance space, the LOU will allow VRE to cost-effectively maintain rolling stock, as well as systems and components, in a state of good repair. It will optimize maintenance and reduce costs by allowing the in-house replacement of items before they fail. The LOU will house two tracks that can hold up to four cars at one time and be equipped with a drop table and wheel truing machine. To maintain storage capacity within Crossroads Yard three new tracks are being constructed to provide enhanced flexibility to our operations crews for train movements and storage.	Construction	\$ 52,183,632.00	Deep foundation and lower level building construction activities continue as we celebrated one year of construction in mid-December.
Manassas Park Parking Expansion	A new garage will nearly double the 600 spaces currently available in the existing surface lot. A pedestrian bridge will provide grade-separated access to the existing platform and lot. The VRE station and garage are an integral part of the City Center Redevelopment District, the proposed transit-accessible high-density mixed-use town center of Manassas Park.	Final Design	\$ 25,983,000.00	Site plan submitted to the city for review. Building plan review planned for end of January.
Manassas Station Improvements	The project expands the VRE Manassas Station platform to serve full length trains and enhances pedestrian access to the station. Alternatives to increase the platform length to enable boarding and alighting from all passenger cars will be evaluated.	Development	\$ 9,125,000.00	This project is funded with I-66 OTB funding. Initiation of project planning pending completion of a Force Account Addendum with Norfolk Southern Railway.
New York Avenue Midday Storage Facility	This new facility will store trains currently located in Amtrak's Ivy City coach yard, as Amtrak now has need for the storage tracks. The New York Avenue site, which is proximate to Washington Union Station, will be able to accommodate additional VRE trains.	Development	\$ 89,666,508.00	Attended site visit on December 8, 2021 with design team to revisit original concept design and review potential alternatives.
Potomac Shores Station	This new station, in a master-planned community in Prince William County, is being funded, designed, and constructed by the developer of Potomac Shores in consultation with VRE and other stakeholders. The station will be just a short walk from the town center. A new side platform will be constructed which is designed to be converted into an island platform in the future when the 3rd track is added to corridor operations.	Final Design	\$ -	Final design plans submitted to Prince William County for approval and permits and for VRE and CSX review and approval.

- continued next page -

CAPITAL PROJECTS UPDATE

Project Name	Project Description	Current Phase	Budget		Project Notes
Quantico Station Improvements	Service and safety will be enhanced through the construction of a new center platform, ADA-compliant pedestrian bridges, existing platform extension, and third track. These improvements will allow the station to accommodate additional passengers and more frequent and longer trains and operations flexibility with three boardable platform edges.	Construction	\$	23,973,061.00	Jack and bore for island platform drainage completed. Manhole installations and corresponding drainage lines proceeding.
Rippon Station Improvements	Extend existing platform with a second pedestrian overpass.	Development	\$	16,634,794.00	VRE has reengaged this project and returned it to the CIP budget for future years. Project schedule updates pending input from various stakeholders.
Rolling Road Station Improvements	An extended platform will accommodate eight-car trains, eliminating the need for passengers near the rear to move to a different railcar when disembarking. Enhanced passenger safety and reduced station dwell times will result. Rehabilitation and repair of the existing platform, replacement of stairs and the existing canopy roof, and an upgrade of the lighting and communication systems are planned.	Construction	\$	5,000,000.00	Existing platform rehabilitation in progress.

For more information about VRE capital projects, visit <https://projects.vre.org/list>

JANUARY 2022

NOTES

[illegible]

NOTES

[illegible]

This page intentionally left blank



VIRGINIA RAILWAY EXPRESS

1500 KING STREET, SUITE 202 • ALEXANDRIA, VA 22314 • 703.684.1001

VRE.ORG

