

# CEO REPORT

SEPTEMBER 2022



# OUR MISSION

The Virginia Railway Express, a joint project of the Northern Virginia Transportation Commission and the Potomac Rappahannock Transportation Commission, will provide safe, cost-effective, accessible, reliable, convenient, and customer responsive commuter-oriented rail passenger service. VRE contributes to the economic vitality of its member jurisdictions as an integral part of a balanced, intermodal regional transportation system.





CEO REPORT | SEPTEMBER 2022

## TABLE OF CONTENTS

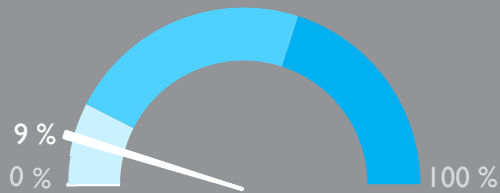
PERFORMANCE AT A GLANCE .....	3
ON-TIME PERFORMANCE .....	4
AVERAGE DAILY RIDERSHIP .....	6
SUMMONSES ISSUED .....	7
TRAIN UTILIZATION .....	8
PARKING UTILIZATION .....	9
FACILITIES UPDATE.....	10
UPCOMING PROCUREMENTS .....	11
CAPITAL PROJECTS UPDATES .....	12



VIRGINIA RAILWAY EXPRESS  
A better way. A better life.

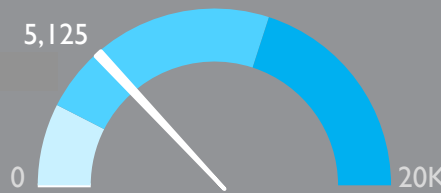


# PERFORMANCE AT A GLANCE



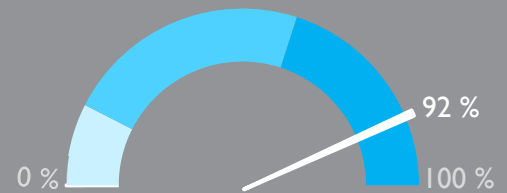
PARKING  
UTILIZATION

The total number of parking spaces used in the VRE system during the month, divided by the total number of parking spaces available.



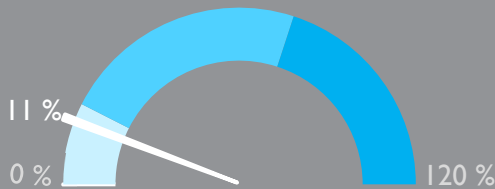
AVERAGE DAILY  
RIDERSHIP

The average number of boardings each operating day inclusive of Amtrak Step-Up boardings and reduced, "S" schedule, service.  
Same month, previous year: 2,625



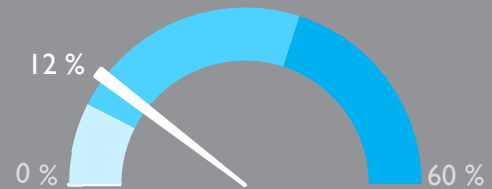
ON-TIME  
PERFORMANCE

Percent of trains arriving at their destination within 5 minutes of the schedule.  
Same month, previous year: 80%



SYSTEM CAPACITY

The percent of peak hour train seats occupied. The calculation excludes reverse flow and non-peak hour trains.



OPERATING RATIO

*Through June 2022*

Year-to-date operating revenues divided by year-to-date operating expenses, which represents the share of operating costs paid by the riders.  
Board-approved goal: 52%

**August 2022**

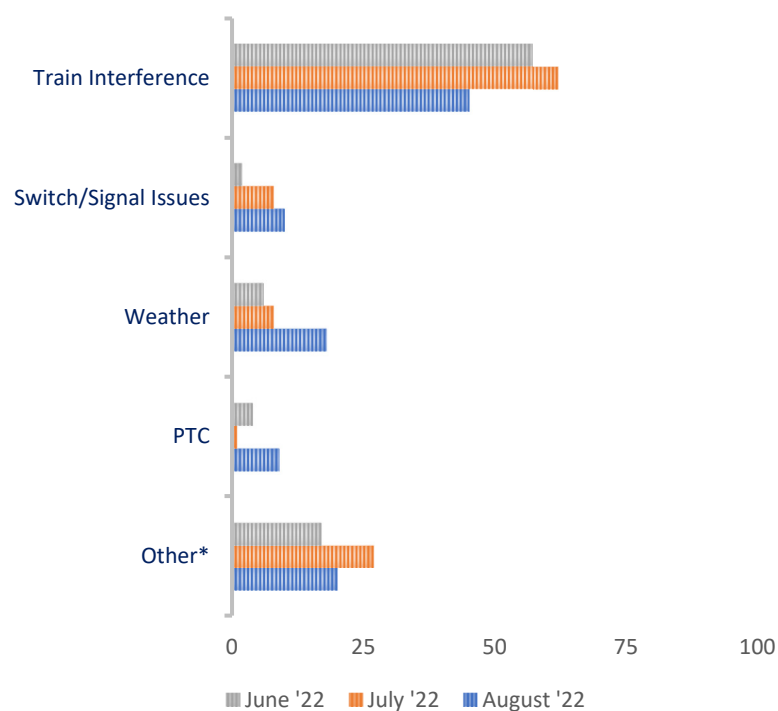


# ON-TIME PERFORMANCE

## OUR RECORD

	August 2022	July 2022	August 2021
Manassas Line	81%	80%	78%
Fredericksburg Line	91%	87%	82%
Systemwide	86%	83%	80%

## PRIMARY REASON FOR DELAY



VRE operated 731 trains in August. The on-time rate for August was 86 percent.

One-hundred two trains arrived more than 5 minutes late to their final destinations. Of those late trains, 71 were on the Manassas Line (70 percent), and 31 were on the Fredericksburg Line (30 percent).

On-time performance improved slightly over last month. Train interference continues to be the largest contributor to delays, but August saw a significant increase in weather-related issues, including flash flooding and high winds.

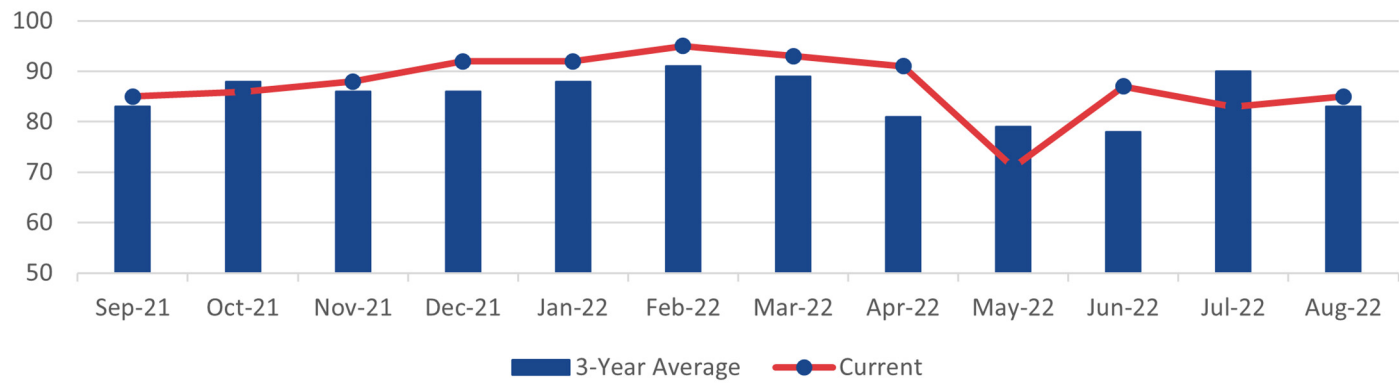
\*Includes trains that were delayed due to operational testing and passenger handling.

## LATE TRAINS

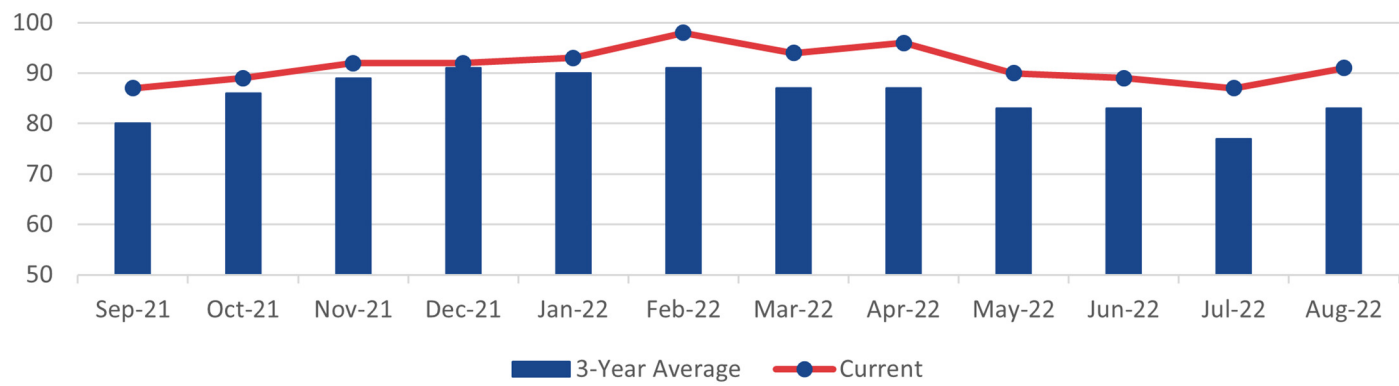
	System Wide			Fredericksburg Line			Manassas Line		
	June	July	August	June	July	August	June	July	August
Total late trains	86	106	102	36	42	31	50	64	71
Average minutes late	17	21	31	18	28	38	16	17	28
Number over 30 minutes	8	13	20	3	6	7	5	7	13
Heat restrictions	14	14	8	14	14	8	0	0	0

ON-TIME PERFORMANCE

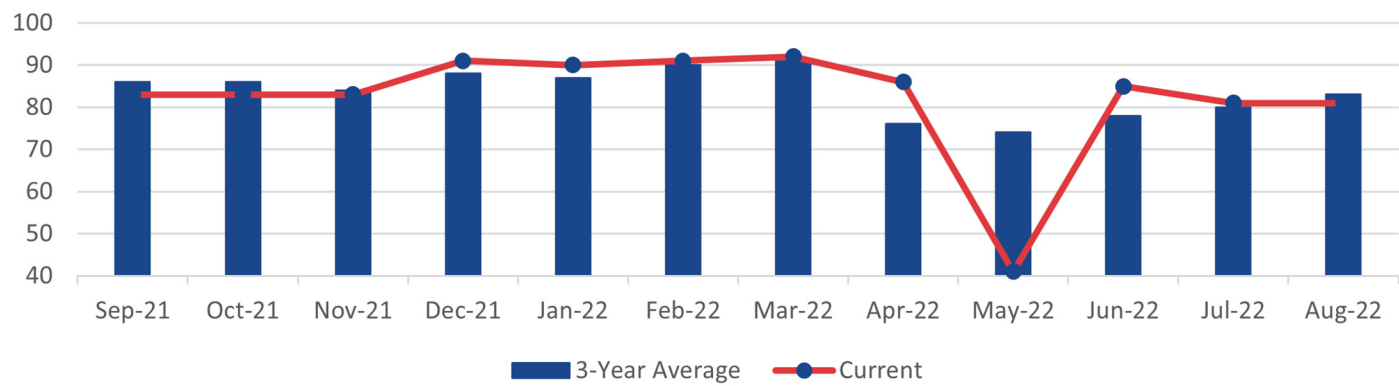
VRE SYSTEM



FREDERICKSBURG LINE

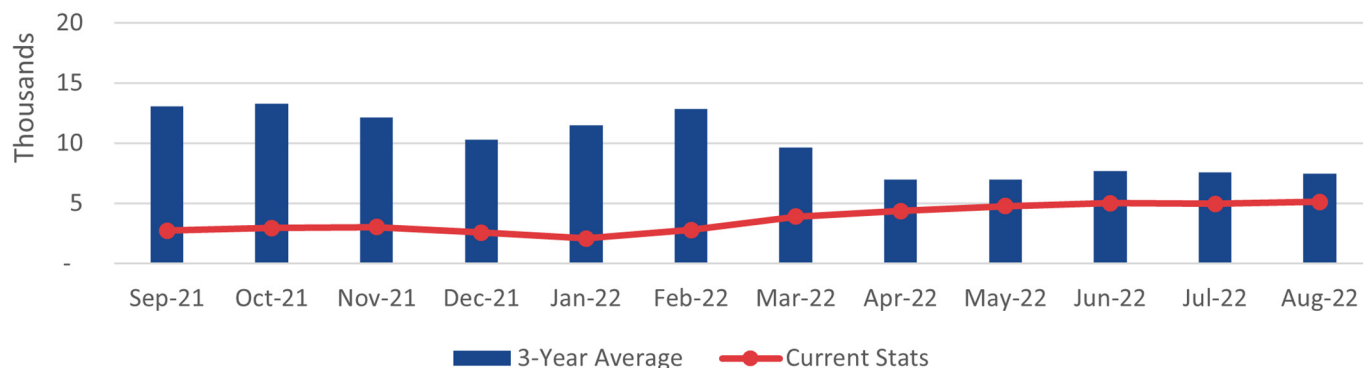


MANASSAS LINE

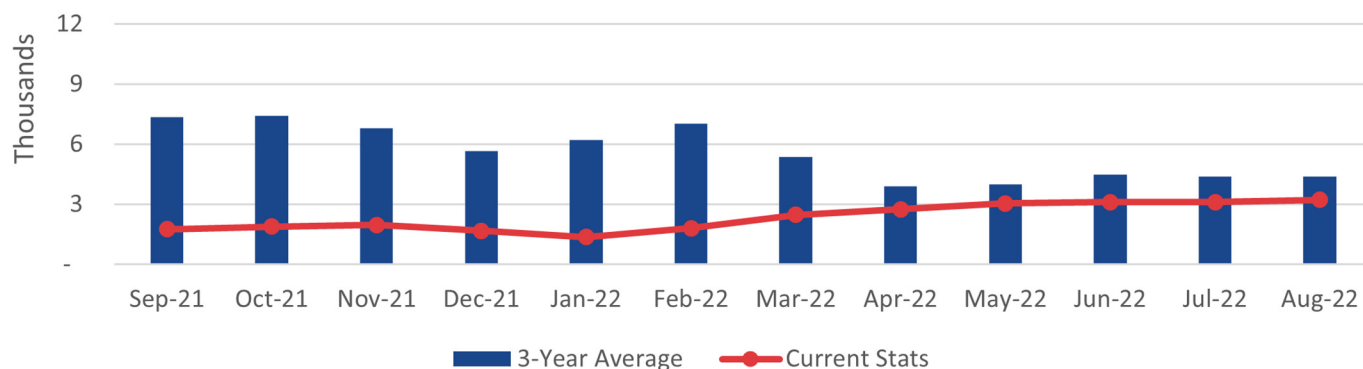


# AVERAGE DAILY RIDERSHIP

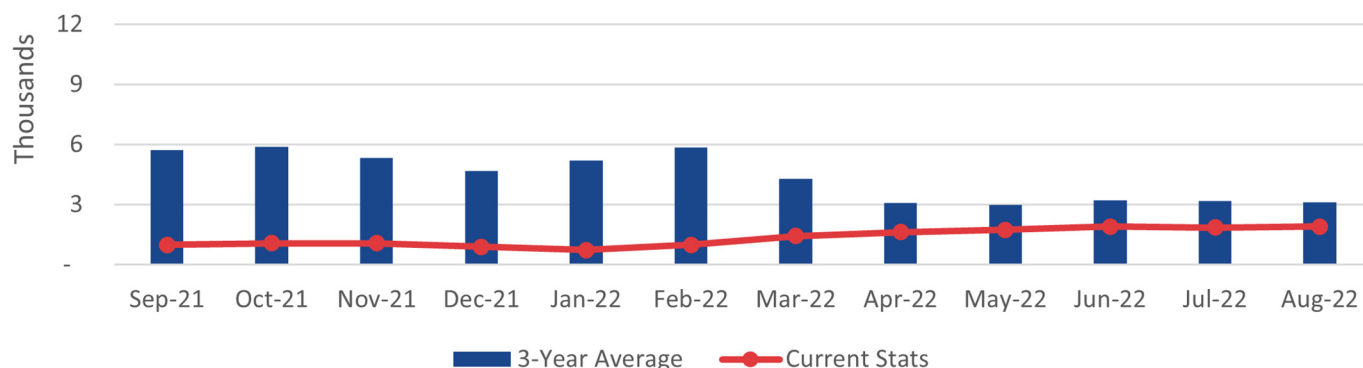
## VRE SYSTEM



## FREDERICKSBURG LINE



## MANASSAS LINE



## RIDERSHIP UPDATES

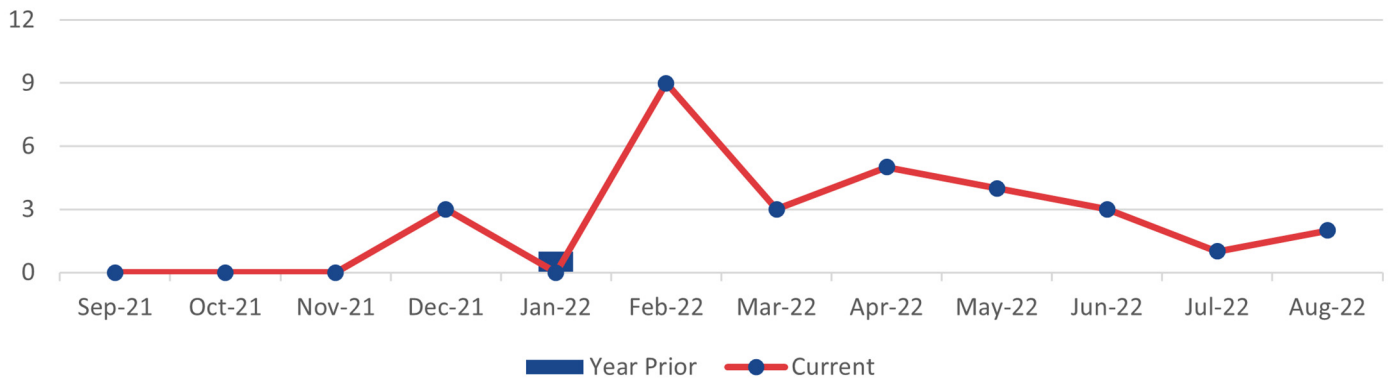
Average daily ridership in August was 5,125. There were 23 service days.

Ridership continued to trend upward. On Wednesday, August 24, VRE ridership reached 6,695, its highest post-shutdown.

	August 2022	July 2022	August 2021
Monthly Ridership	117,880	99,120	57,758
Average Daily Ridership	5,125	4,956	2,625
Full Service Days	23	20	22
"S" Service Days	0	0	0

## SUMMONSES ISSUED

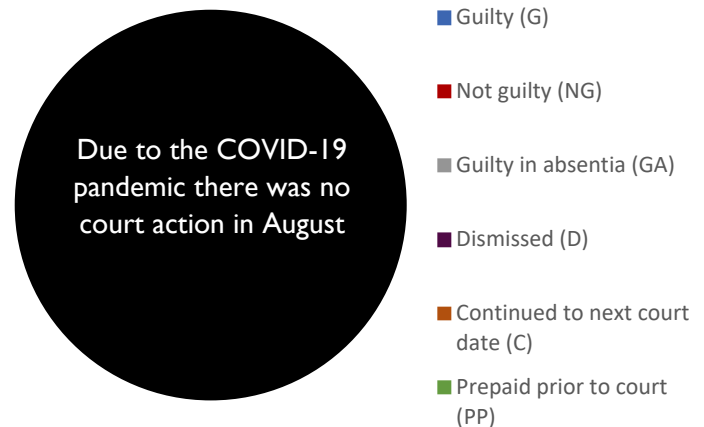
### VRE SYSTEM



### SUMMONSES WAIVED OUTSIDE OF COURT

Reason for Dismissal	Occurrences
Passenger showed proof of a monthly ticket	0
One-time courtesy	0
Per the request of the conductor	0
Defective ticket	0
Per ops manager	0
Unique circumstances	0
Insufficient information	0
Lost and found ticket	0
Other	0
<b>Total Waived</b>	<b>0</b>

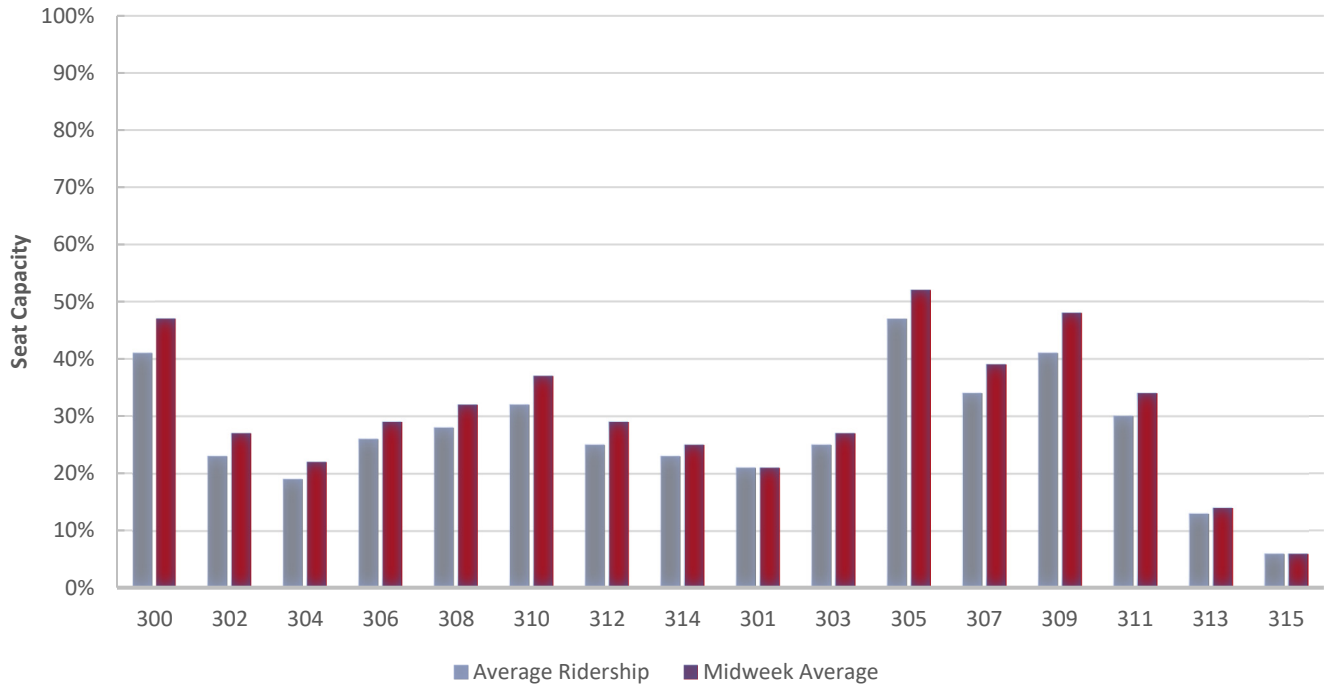
### MONTHLY SUMMONSES COURT ACTION



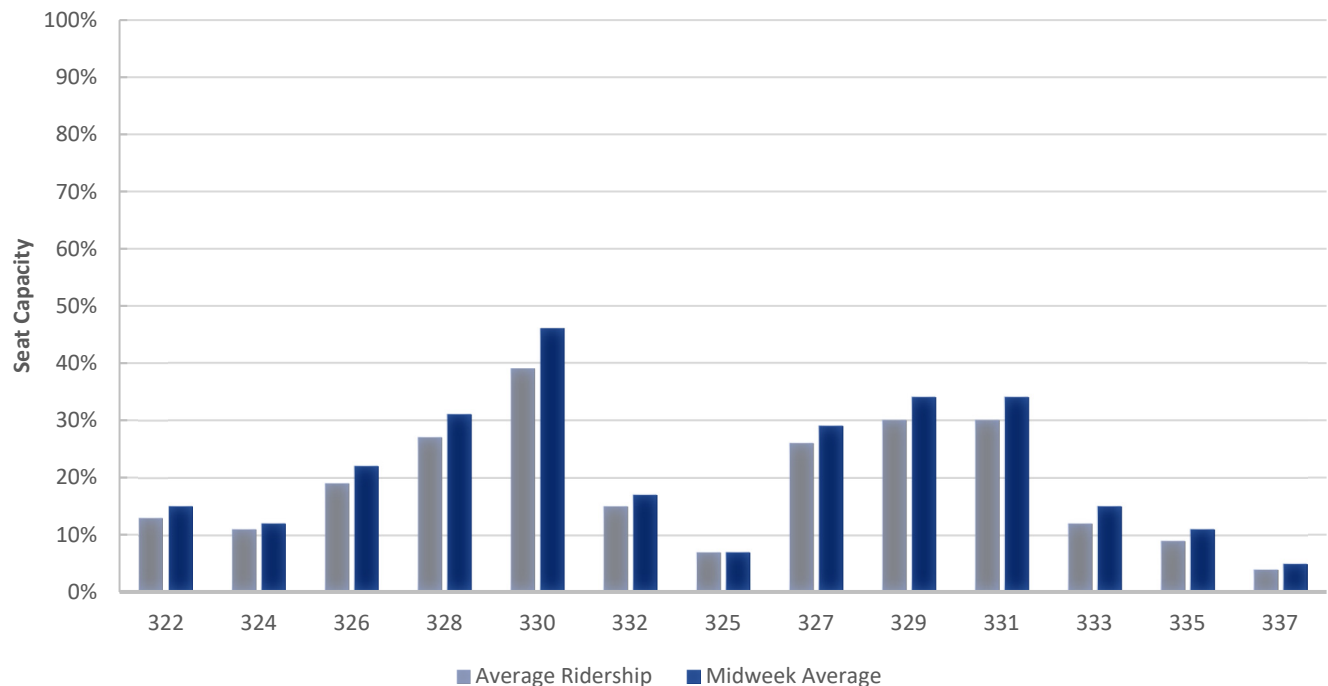


# TRAIN UTILIZATION

## FREDERICKSBURG LINE

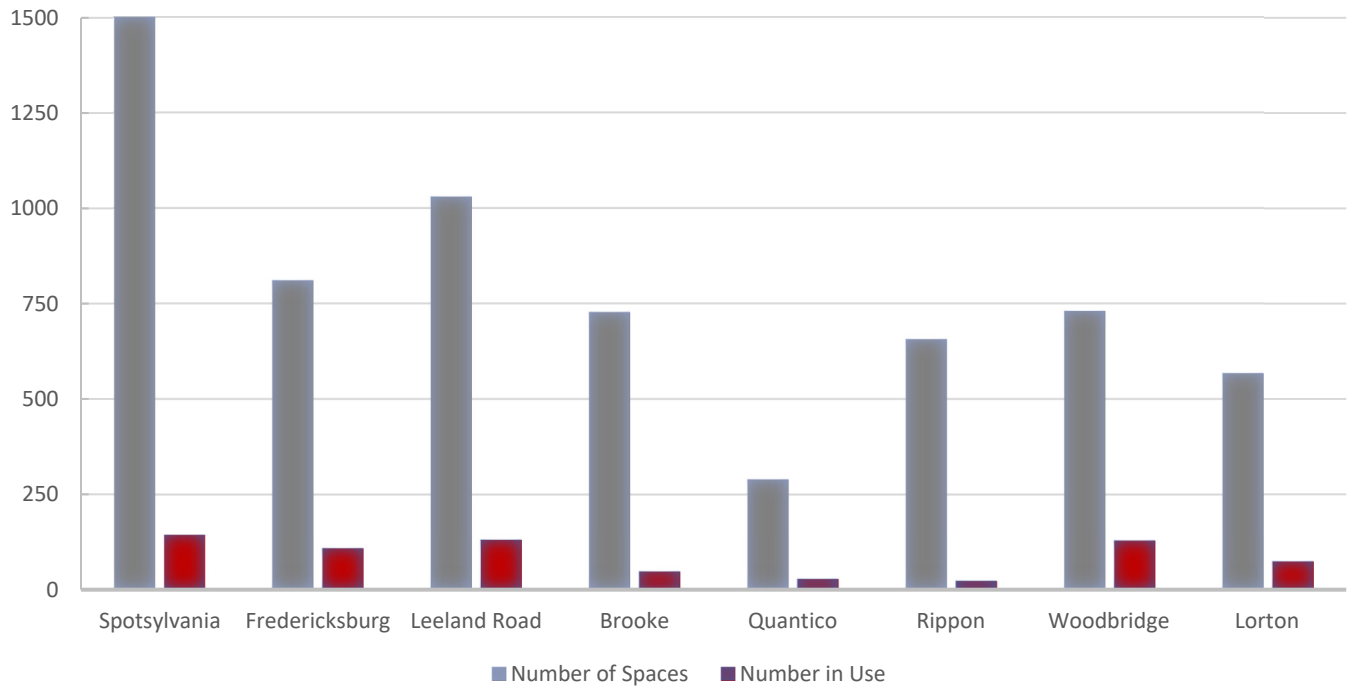


## MANASSAS LINE

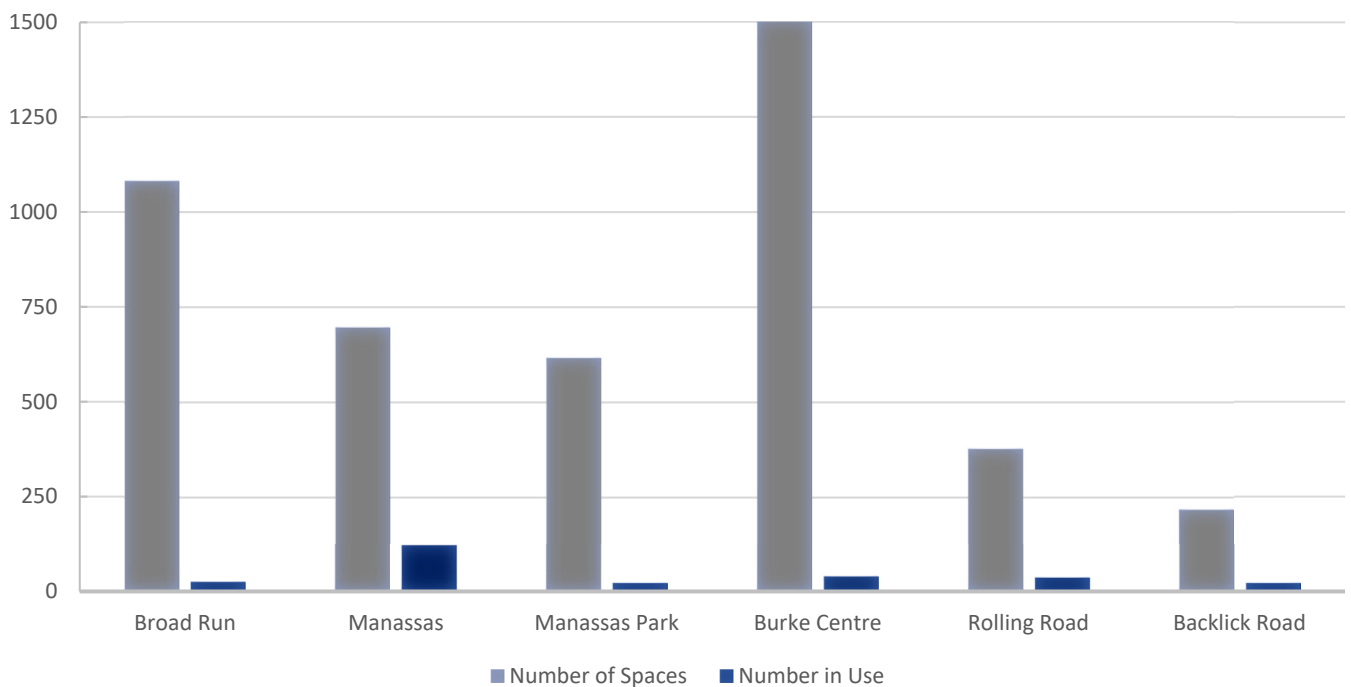


# PARKING UTILIZATION

## FREDERICKSBURG LINE



## MANASSAS LINE



# FACILITIES UPDATE

The following is a status update of VRE facilities projects.

## Completed projects:

1. Painting of Alexandria station
2. Replacement of chain link gates at rear of Alexandria station platform
3. Installation of poster display cases for Rolling Road Station Improvements project



*Recently painted tunnel at Alexandria station*

## Projects scheduled to be completed this quarter:

1. Repair of steel components of ADA lift enclosure at Woodbridge station
2. Replacement of windscreen plexiglass panels at Rippon station
3. Replacement of existing lighting with LED lighting at Fredericksburg Lot G
4. Painting of Rippon, Leeland Road and Backlick Road stations
5. Replacement of waste and recycling receptacles at various stations



*Chain link gate replacement at Alexandria station*

## Projects scheduled to be initiated this quarter:

1. Minor repair of concrete at Alexandria station
2. Modernization of east elevator at Woodbridge station
3. Repairs and restriping of parking lots at Woodbridge and Rippon stations
4. Replacement of fluorescent lighting with LED lighting at Fredericksburg office
5. Replacement of ceiling tiles at Fredericksburg office
6. Minor repairs to concrete at Burke Centre station
7. Replacement of existing lighting with LED lighting at Manassas station parking garage
8. Installation of additional storage cabinetry at Alexandria headquarters
9. Replacement of benches at various stations
10. Replacement of parking lot entrance signs at various stations

Ongoing projects:

1. Issuance of construction task order for minor structural concrete repairs at Woodbridge station parking garage, pending permit issuance
2. Procurement of construction contract for L'Enfant Station Waiting Area project, pending permit issuance
3. Fabrication of pathfinder signage for various stations, for subsequent installation by VDOT

## UPCOMING PROCUREMENTS

1. Renewal of locomotive head end power engine systems
2. Program management consulting services
3. Modernization of VRE Woodbridge Station east elevator
4. Forklift trucks
5. Purchase of LED light fixtures
6. Tactile strip replacements
7. Construction Manager / General Contractor for the Alexandria Station improvements project
8. Broad Run and Crossroads security camera system power and network infrastructure upgrade
9. Station security camera upgrade
10. Locomotive master controllers
11. Construction of Manassas Park Station parking expansion



CAPITAL PROJECTS UPDATE

Project Name	Project Description	Current Phase	Budget	Project Notes
Alexandria Station Improvements	Passenger safety will be improved by replacing an at-grade pedestrian track crossing with elevators to connect the two platforms. The elevators and the current and proposed stairs, will connect to the existing tunnel between the two platforms. Adjustments to platform elevation will eliminate the need for step-boxes to access VRE and Amtrak trains. The center platform will be widened and lengthened to accommodate trains on both tracks.	Final Design	\$ 30,975,014.00	Coordination with CSX Alexandria 4th Track Project (~30% Development) ongoing (Aug. & Sept.)
Broad Run Expansion	To accommodate forecasted ridership growth and increase service reliability, improvements are needed at both the Maintenance and Storage Facility (MSF) and station. An enlarged MSF can store longer trains and additional equipment. That requires shifting the existing platform and adding a pedestrian tunnel between the platform and existing and proposed parking lots. A second, 600-space lot and third main track will be constructed.	Final Design	\$ 137,230,000.00	30% redesign submitted for VRE review. Additional fieldwork/borings completed (Aug. & Sept.)
Brooke Station Improvements	Design and construction of a platform extension up to 700 feet to accommodate full-length VRE trains.	Development	\$ 9,284,208.00	VRE has reengaged this project and returned it to the CIP Budget for future years. Project schedule updates pending input from various stakeholders. (Aug. & Sept.)
Crossroads MSF - Storage Expansion, Short-term	The project constructs additional storage tracks at the Crossroads Maintenance and Storage Facility (MSF) adjacent to the existing facility.	Development	\$ 8,365,765.00	VPRA has signed a LONP, allowing development and design work to proceed. (Aug. & Sept.)
Crystal City Station Improvements	Improved station access and service reliability will result from a new station. The platform at the relocated station will allow for the simultaneous boarding of two full-length trains. The station's design will accommodate a future pedestrian/bicycle connection between the station and the airport.	Development	\$ 50,114,624.00	Stakeholder coordination continues for implementation of the phased design and construction approach, which was presented at the April Operations Board meeting. (Aug. & Sept.)
Facilities Design Guidelines Update	Update to the 2019 VRE Facility Design Guidelines.	Final Design	\$ 80,000.00	Task order is complete. Future document updates will take place under separate contract. (Sept.) Circulating review copies of text document and plans for final departmental review prior to delivery to consultant (Aug.).
Franconia-Springfield Station Improvements	Extended platforms will be able to accommodate eight-car trains, eliminating the need for passengers near the rear to move to a different railcar when disembarking. Enhanced passenger safety and reduced station dwell times will result. The longer platforms will increase operational flexibility and capacity. The design will allow for a future third mainline track.	Final Design	\$ 13,000,000.00	NEPA process underway for pedestrian tunnel. Platform design being reviewed to determine updates necessary to accommodate pedestrian tunnel. (Aug. & Sept.)

- continued next page -

CAPITAL PROJECTS UPDATE

Project Name	Project Description	Current Phase	Budget	Project Notes
Fredericksburg Station Rehabilitation	The rehabilitation of platforms, stairs and bridges will improve passenger safety and better accommodate the boarding and disembarking of riders from VRE and Amtrak trains. New stairs will allow passengers to move between the platform and a parking lot without crossing the street at grade level. New signage, sidewalks, lighting and paint are included, as is installation of a low-clearance warning sign to a bridge that has experienced numerous vehicle strikes.	Construction	\$ 3,000,000.00	Waiting on final construction funding to execute contract (Sept.) Board authorized contract execution in July (Aug.)
HQ Office Renovations	The project will improve employee safety and security and maximize workspace efficiency at VRE Headquarters, and will include modifications to kitchen, supply room, mail room, bathroom/shower, office and cubicle areas in the north and south wings. The east wing will be modified to include additional offices.	Construction	\$ 250,000.00	Reviewing shop drawings for additional cabinetry in reception area and break room. (Sept.) Executed task order to install additional cabinetry in reception area and break room. (Aug.)
Leeland Road Parking Improvements	This project will expand the surface parking lot at the Leeland Road station by approximately 225 spaces to accommodate future demand.	Development	\$ 5,519,178.00	The project is funded through Virginia SMART SCALE. Funding is allocated for FY20 and 22. A funding agreement is pending. (Aug. & Sept.)
Leeland Road Station Improvements	Design and construction of a platform extension to accommodate full-length VRE trains.	Development	\$ 6,736,091.00	VRE has reengaged this project and returned it to the CIP budget for future years. Project schedule updates pending input from various stakeholders. (Aug. & Sept.))
L'Enfant Station Waiting Area	The existing platform at the L'Enfant station experiences overcrowding during the evening service period. The proposed project will create an additional paved area behind the existing platform, currently landscaped with shrubs and grass, for riders to wait for trains or to bypass riders waiting on the platform.	Final Design	\$ 350,000.00	Met onsite with Boston Properties (BP), adjacent property owner, to discuss brief use of loading dock during construction. Awaiting draft agreement from BP. (Sept.) Site meeting with soil boring contractor to address District DOEE permit requirement to be scheduled. (Aug.)
L'Enfant Track and Station Improvements	Expansion of the VRE L'Enfant Station to provide two platform edges and serve full-length trains. Add a new mainline track between LE and VA interlockings.	Development	\$ 79,980,000.00	Conceptual design for a preferred alternative is underway and is scheduled to be complete Sept. 2022. (Sept.) A property boundary and topographical survey is complete. Alternatives analysis and concept design to define a preferred alternative scheduled to be complete in Sept. 2022 (Aug.)

- continued next page -

CAPITAL PROJECTS UPDATE

Project Name	Project Description	Current Phase	Budget	Project Notes
Fredericksburg Station Rehabilitation	The rehabilitation of platforms, stairs and bridges will improve passenger safety and better accommodate the boarding and disembarking of riders from VRE and Amtrak trains. New stairs will allow passengers to move between the platform and a parking lot without crossing the street at grade level. New signage, sidewalks, lighting and paint are included, as is installation of a low-clearance warning sign to a bridge that has experienced numerous vehicle strikes.	Construction	\$ 3,000,000.00	Waiting on final construction funding to execute contract (Sept.) Board authorized contract execution in July (Aug.)
HQ Office Renovations	The project will improve employee safety and security and maximize workspace efficiency at VRE Headquarters, and will include modifications to kitchen, supply room, mail room, bathroom/shower, office and cubicle areas in the north and south wings. The east wing will be modified to include additional offices.	Construction	\$ 250,000.00	Reviewing shop drawings for additional cabinetry in reception area and break room. (Sept.) Executed task order to install additional cabinetry in reception area and break room. (Aug.)
Leeland Road Parking Improvements	This project will expand the surface parking lot at the Leeland Road station by approximately 225 spaces to accommodate future demand.	Development	\$ 5,519,178.00	The project is funded through Virginia SMART SCALE. Funding is allocated for FY20 and 22. A funding agreement is pending. (Aug. & Sept.)
Leeland Road Station Improvements	Design and construction of a platform extension to accommodate full-length VRE trains.	Development	\$ 6,736,091.00	VRE has reengaged this project and returned it to the CIP budget for future years. Project schedule updates pending input from various stakeholders. (Aug. & Sept.))
L'Enfant Station Waiting Area	The existing platform at the L'Enfant station experiences overcrowding during the evening service period. The proposed project will create an additional paved area behind the existing platform, currently landscaped with shrubs and grass, for riders to wait for trains or to bypass riders waiting on the platform.	Final Design	\$ 350,000.00	Met onsite with Boston Properties (BP), adjacent property owner, to discuss brief use of loading dock during construction. Awaiting draft agreement from BP. (Sept.) Site meeting with soil boring contractor to address District DOEE permit requirement to be scheduled. (Aug.)
L'Enfant Track and Station Improvements	Expansion of the VRE L'Enfant Station to provide two platform edges and serve full-length trains. Add a new mainline track between LE and VA interlockings.	Development	\$ 79,980,000.00	Conceptual design for a preferred alternative is underway and is scheduled to be complete Sept. 2022. (Sept.) A property boundary and topographical survey is complete. Alternatives analysis and concept design to define a preferred alternative scheduled to be complete in Sept. 2022 (Aug.)

- continued next page -

CAPITAL PROJECTS UPDATE

Project Name	Project Description	Current Phase	Budget	Project Notes
Quantico Station Improvements	Service and safety will be enhanced through the construction of a new center platform, ADA-compliant pedestrian bridges, existing platform extension, and third track. These improvements will allow the station to accommodate additional passengers and more frequent and longer trains and operations flexibility with three boardable platform edges.	Construction	\$ 23,973,061.00	Pedestrian bridge steel span placement done 8/26 & 8/27. Platform concrete progressing on both platforms. (Sept.) Soil nail wall started. Test nails installed. Mat slab 1 in process. Platform 2 progressing. Structural steel for towers being installed. (Aug.)
Rippon Station Improvements	Extend existing platform with a second pedestrian overpass.	Development	\$ 16,634,794.00	VRE has reengaged this project and returned it to the CIP budget for future years. Project schedule updates pending input from various stakeholders. (June & July 2022)
Rolling Road Station Improvements	An extended platform will accommodate eight-car trains, eliminating the need for passengers near the rear to move to a different railcar when disembarking. Enhanced passenger safety and reduced station dwell times will result. Rehabilitation and repair of the existing platform, replacement of stairs and the existing canopy roof, and an upgrade of the lighting and communication systems are planned.	Construction	\$ 5,000,000.00	Final site work is complete. Existing platform repairs are ongoing. (Aug.)

For more information about VRE capital projects, visit <https://projects.vre.org/list>



*This page intentionally left blank*



## VIRGINIA RAILWAY EXPRESS

1500 KING STREET, SUITE 202 • ALEXANDRIA, VA 22314 • 703.684.1001

[VRE.ORG](http://VRE.ORG)

