

CEO REPORT

JULY 2023



OUR MISSION

The Virginia Railway Express, a joint project of the Northern Virginia Transportation Commission and the Potomac Rappahannock Transportation Commission, will provide safe, cost-effective, accessible, reliable, convenient, and customer responsive commuter-oriented rail passenger service. VRE contributes to the economic vitality of its member jurisdictions as an integral part of a balanced, intermodal regional transportation system.



CEO REPORT | JULY 2023

TABLE OF CONTENTS

PERFORMANCE AT A GLANCE 3

ON-TIME PERFORMANCE 4

AVERAGE DAILY RIDERSHIP 6

SUMMONSES ISSUED 7

TRAIN UTILIZATION 8

PARKING UTILIZATION 9

FACILITIES UPDATE.....10

UPCOMING PROCUREMENTS11

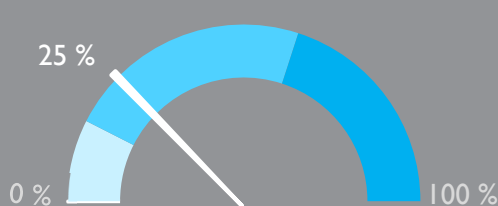
CAPITAL PROJECTS UPDATES.....12



VIRGINIA RAILWAY EXPRESS
A better way. A better life.

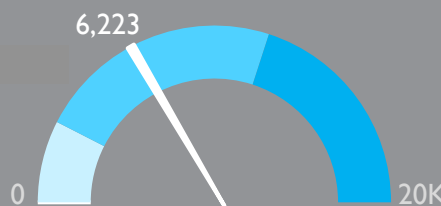


PERFORMANCE AT A GLANCE



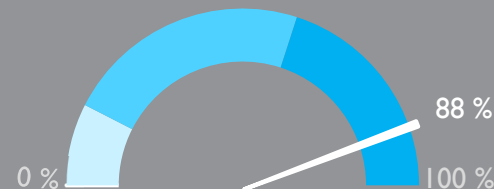
PARKING
UTILIZATION

The total number of parking spaces used in the VRE system during the month, divided by the total number of parking spaces available.



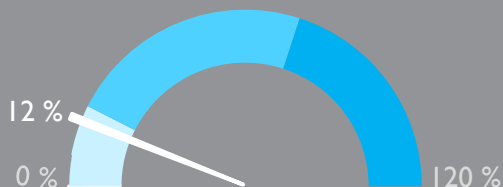
AVERAGE DAILY
RIDERSHIP

The average number of boardings each operating day inclusive of Amtrak Step-Up boardings and reduced, "S" schedule, service.
Same month, previous year: 4,777



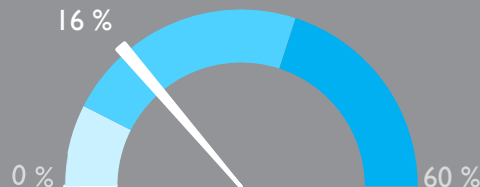
ON-TIME
PERFORMANCE

Percent of trains arriving at their destination within 5 minutes of the schedule.
Same month, previous year: 87%



SYSTEM CAPACITY

The percent of peak hour train seats occupied. The calculation excludes reverse flow and non-peak hour trains.



OPERATING RATIO

Through May 2023

Year-to-date operating revenues divided by year-to-date operating expenses, which represents the share of operating costs paid by the riders.

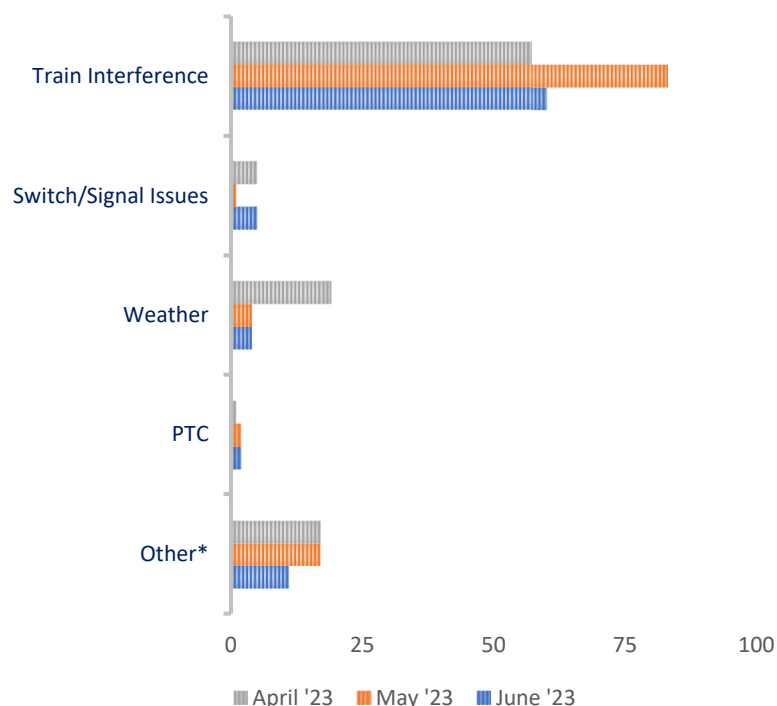
June 2023

ON-TIME PERFORMANCE

OUR RECORD

	June 2023	May 2023	June 2022
Manassas Line	86%	84%	85%
Fredericksburg Line	90%	85%	89%
Systemwide	88%	84%	87%

PRIMARY REASON FOR DELAY



VRE operated 688 trains in June. The on-time rate for the month was 88 percent.

Eighty-two trains arrived more than 5 minutes late to their final destinations. Of those late trains, 48 were on the Manassas Line (59 percent), and 34 were on the Fredericksburg Line (41 percent).

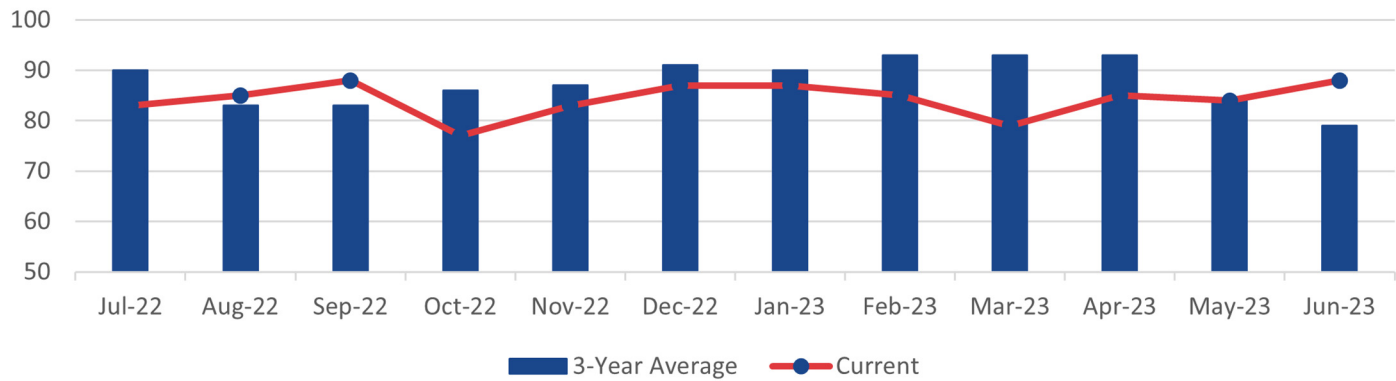
*Includes trains that were delayed due to operational testing and passenger handling.

LATE TRAINS

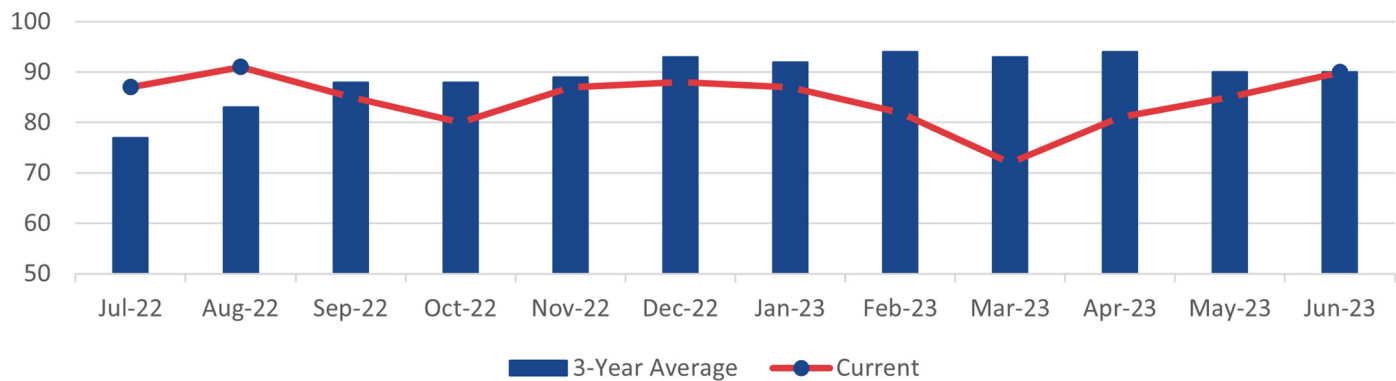
	System Wide			Fredericksburg Line			Manassas Line		
	Apr.	May	June	Apr.	May	June	Apr.	May	June
Total late trains	99	107	82	60	52	34	39	55	48
Average minutes late	14	14	14	14	13	16	14	15	13
Number over 30 minutes	6	6	4	3	2	3	6	4	1
Heat restrictions	8	3	7	8	3	7	0	0	0

ON-TIME PERFORMANCE

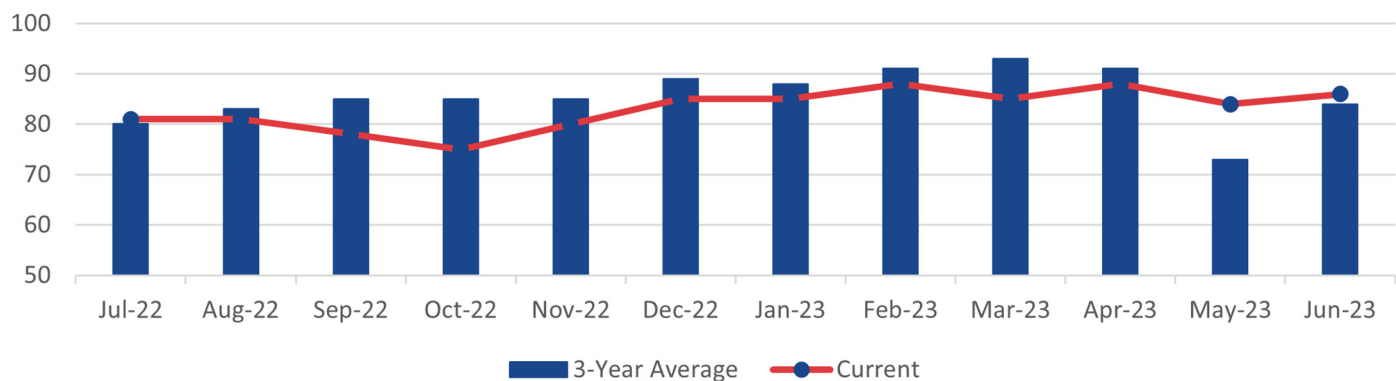
VRE SYSTEM



FREDERICKSBURG LINE

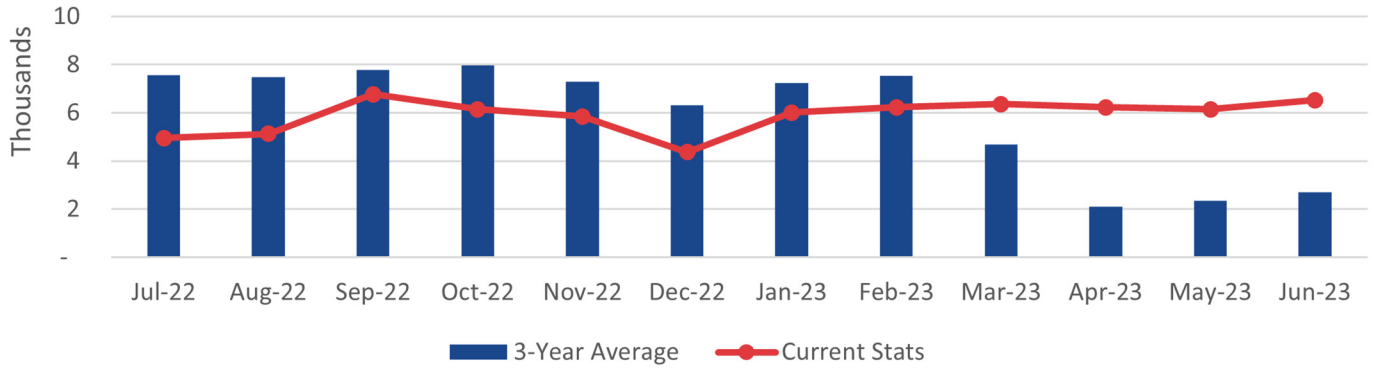


MANASSAS LINE

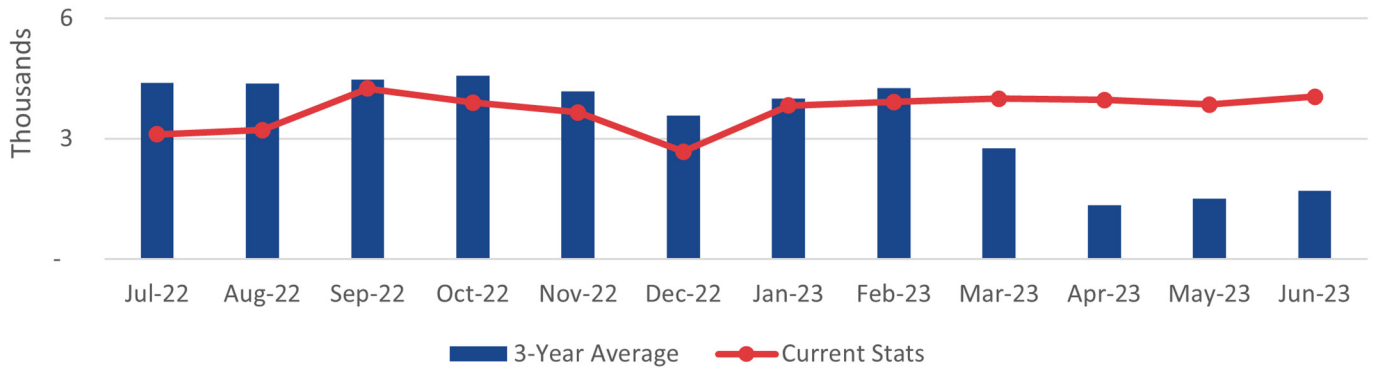


AVERAGE DAILY RIDERSHIP

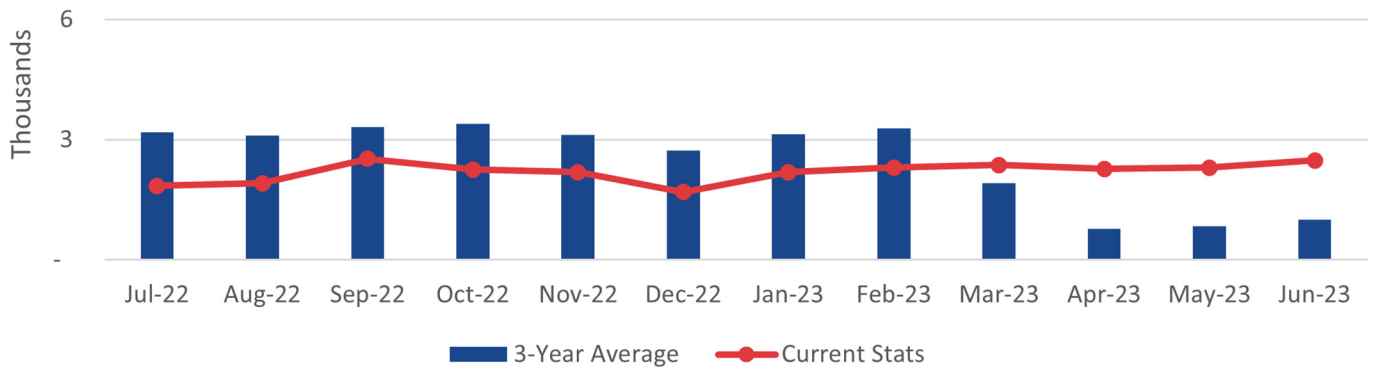
VRE SYSTEM



FREDERICKSBURG LINE



MANASSAS LINE



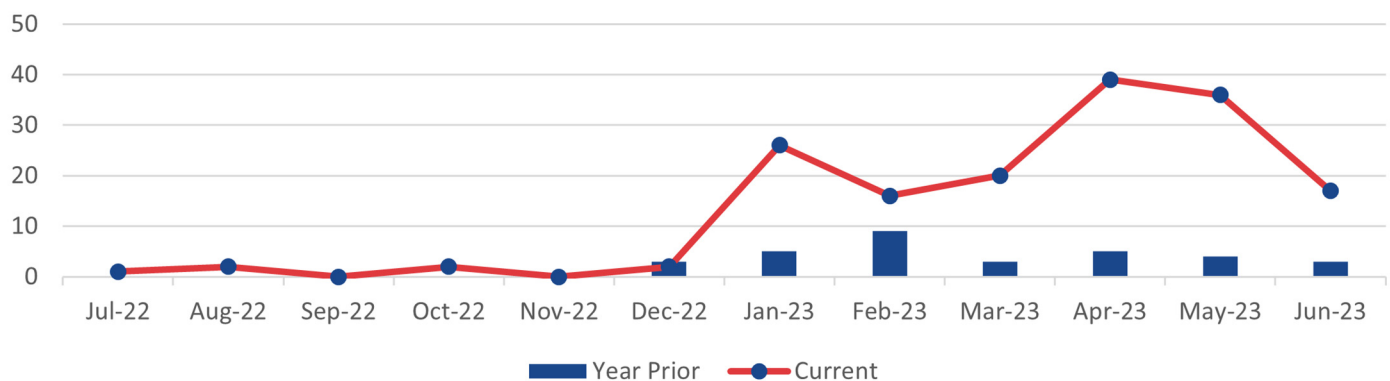
RIDERSHIP UPDATES

Average daily ridership for the month was 6,223. There were 21 full- and one reduced-service days.

	June 2023	May 2023	June 2022
Monthly Ridership	136,900	135,314	110,208
Average Daily Ridership	6,223	6,151	5,009
Bicycles on Trains	1,171	1,674	N/A
Full Service Days	21	22	21
"S" Service Days	1	0	1

SUMMONSES ISSUED

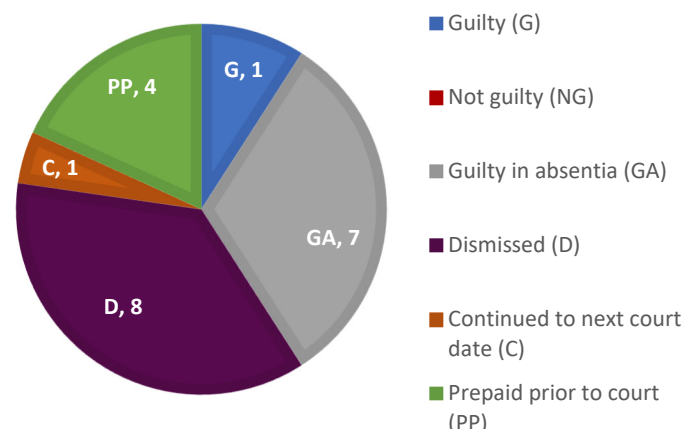
VRE SYSTEM



SUMMONSES WAIVED OUTSIDE OF COURT

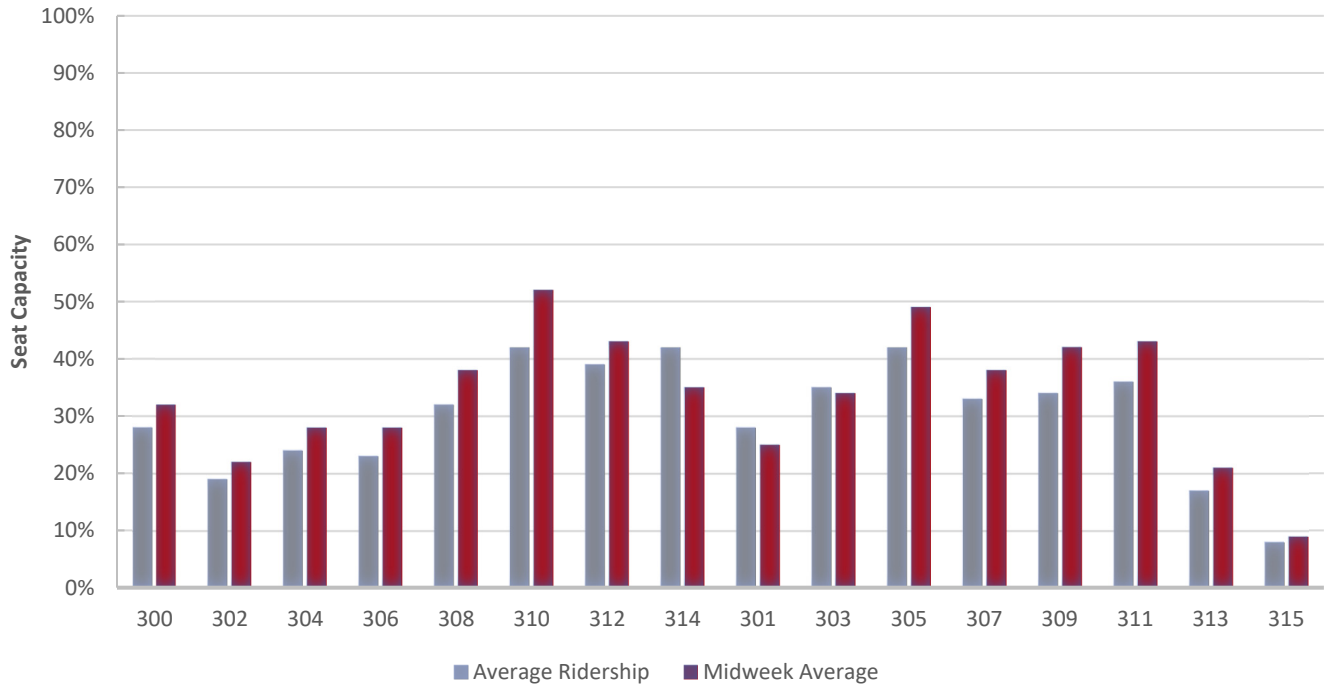
Reason for Dismissal	Occurrences
Passenger showed proof of a monthly ticket	1
One-time courtesy	9
Per the request of the conductor	12
Defective ticket	0
Per ops manager	0
Unique circumstances	0
Insufficient information	0
Lost and found ticket	0
Other	1
Total Waived	23

MONTHLY SUMMONSES COURT ACTION

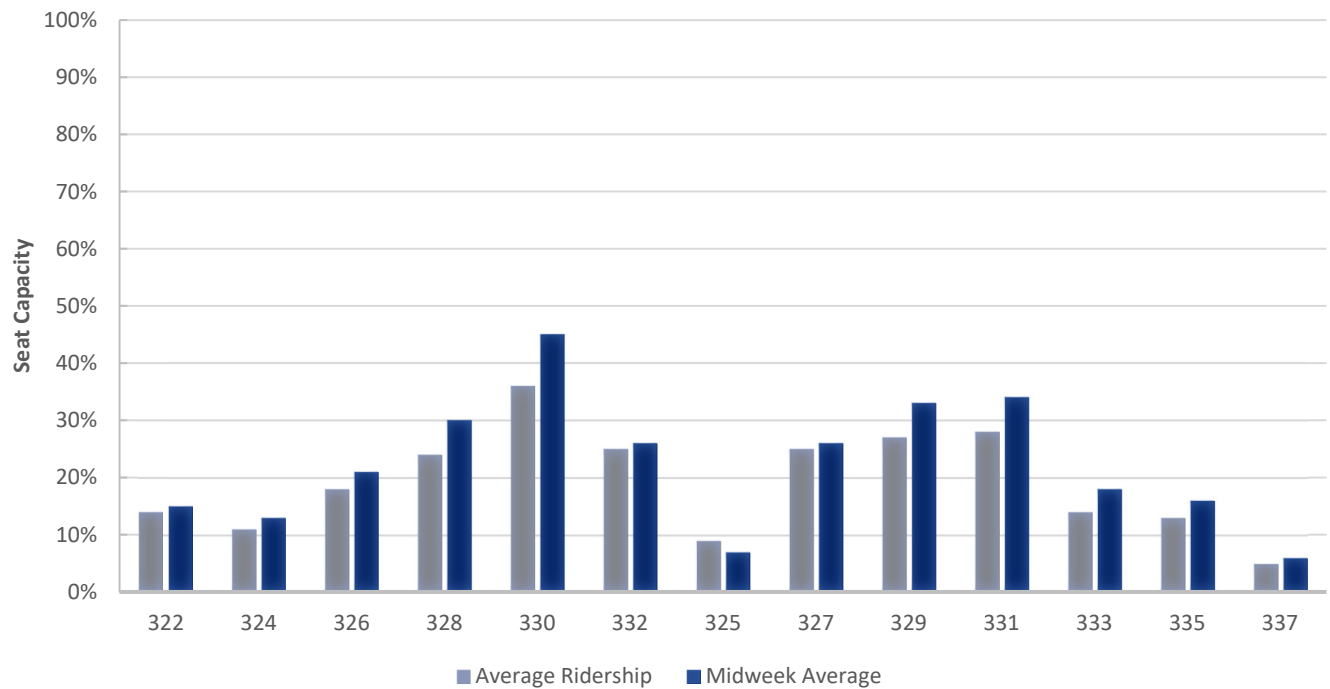


TRAIN UTILIZATION

FREDERICKSBURG LINE

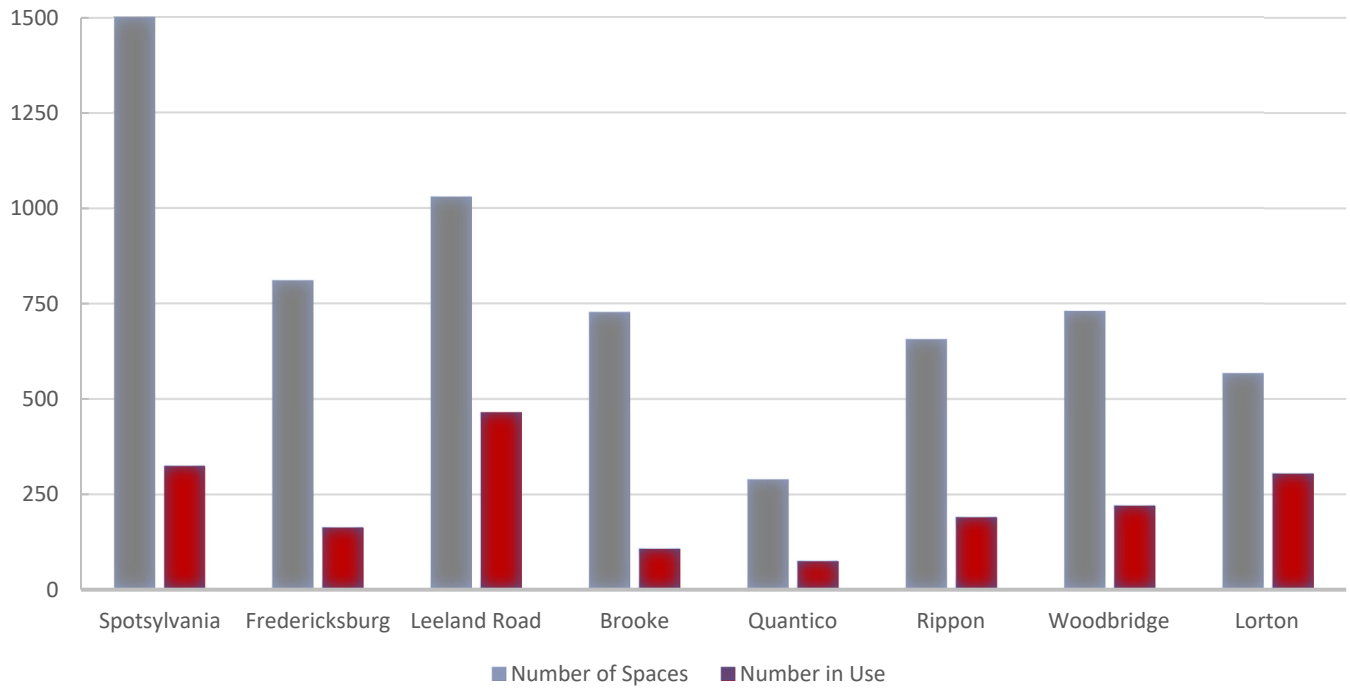


MANASSAS LINE

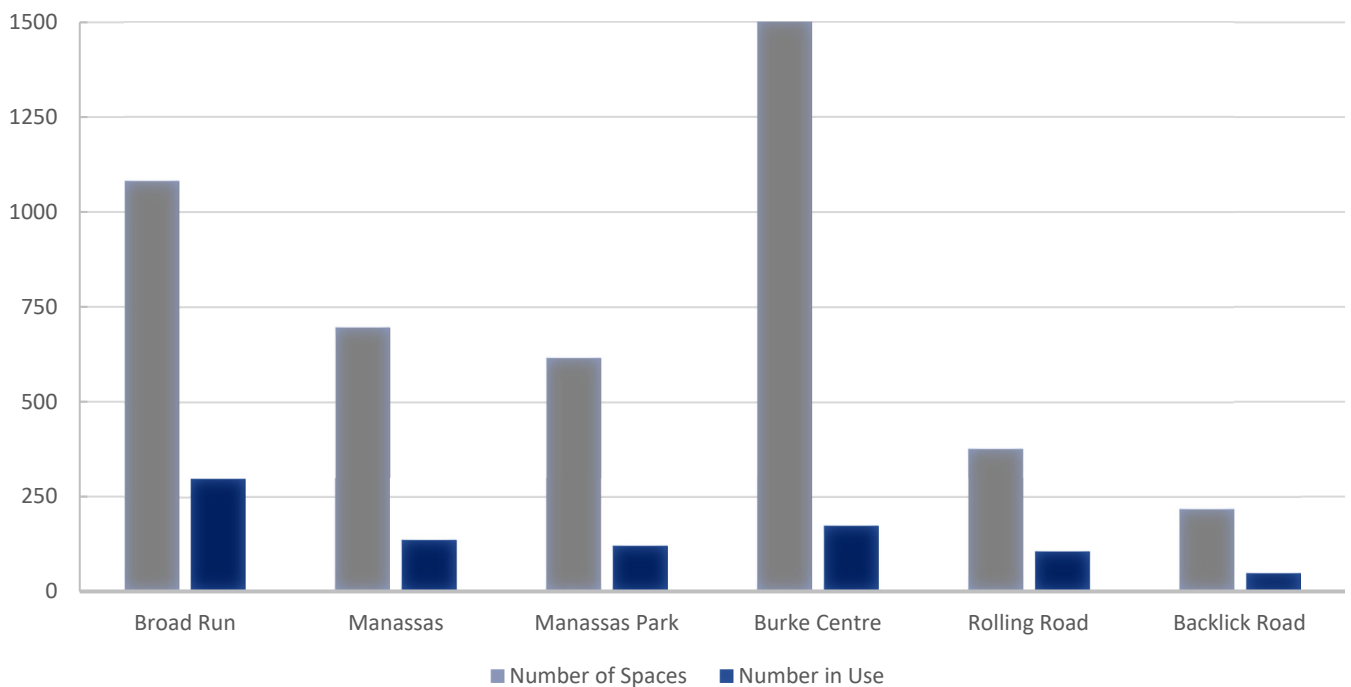


PARKING UTILIZATION

FREDERICKSBURG LINE



MANASSAS LINE



FACILITIES UPDATE

The following is a status update of VRE facilities projects.

Completed projects:

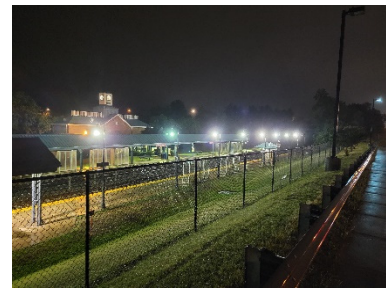
1. Replacement of Spotsylvania station parking lot lighting time clock
2. Replacement of waste and recycling receptacles at various stations
3. Replacement of benches at various stations



Spotsylvania station parking lot lighting time clock

Projects scheduled to be completed this quarter:

1. Replacement of existing lighting with LED lighting on west platform at Woodbridge station
2. Sealcoating and restriping of parking lots at Woodbridge and Rippon stations
3. Pressure washing of exterior and interior of Manassas station parking garage
4. Replacement/installation of pathfinder signage for Franconia-Springfield, Lorton, Woodbridge, Rippon, Quantico, Backlick Road, Rolling Road, Burke Centre, Manassas Park, Manassas, and Broad Run stations
5. Painting of L'Enfant, Lorton, Spotsylvania, and Burke Centre stations
6. Installation of 988 Suicide & Crisis Lifeline signage on station inter-track fences, pending availability of CSX protection
7. Installation of No Trespassing signage at Rippon, Spotsylvania, and Broad Run station parking lots



Woodbridge station platform lighting

Projects scheduled to be initiated this quarter:

1. Minor repairs to concrete platform at Alexandria station
2. Modernization of east elevator at Woodbridge station
3. Replacement of LED lighting at Woodbridge station parking garage
4. Replacement of windscreen plexiglass panels at Lorton and Woodbridge stations
5. Improvements to various elements of Quantico station building
6. Repairs to steel railings at Brooke station
7. Repairs to steel railings at Backlick Road station

JULY 2023

8. Replacement of electrical cabinet at Rolling Road station
9. Installation of bird control netting at Rolling Road station
10. Repairs to steel railings at Burke Centre station
11. Replacement of existing lighting with LED lighting at Manassas station parking garage
12. Replacement of parking lot entrance signs at various stations

Ongoing projects:

1. Minor structural concrete repairs at Woodbridge station parking garage, pending permit issuance
2. Procurement of construction contract for L'Enfant Station Waiting Area project, pending permit issuance

UPCOMING PROCUREMENTS

1. Modernization of VRE Woodbridge station east elevator
2. Alexandria Station improvements
3. Broad Run and Crossroads security camera system power and network infrastructure upgrade
4. Locomotive master controllers
5. Variable messaging system replacement
6. Locomotive layover battery chargers
7. Facility security services
8. Window gaskets for VRE railcars

CAPITAL PROJECTS UPDATE

Project Name	Project Description	Current Phase	Budget	Project Notes
Alexandria Station Improvements	Passenger safety will be improved by replacing an at-grade pedestrian track crossing with elevators to connect the two platforms. The elevators and the current and proposed stairs, will connect to the existing tunnel between the two platforms. Adjustments to platform elevation will eliminate the need for step-boxes to access VRE and Amtrak trains. The center platform will be widened and lengthened to accommodate trains on both tracks.	Final Design	\$ 37,288,433.00	Coordinating potential minor adjustments to CSXT 60% track plans and 30% bridge plans in the vicinity of VRE platforms. Upon resolution, VRE plans to be updated. (June/July)
Broad Run Expansion	To accommodate forecasted ridership growth and increase service reliability, improvements are needed at both the Maintenance and Storage Facility (MSF) and station. An enlarged MSF can store longer trains and additional equipment. That requires shifting the existing platform and adding a pedestrian tunnel between the platform and existing and proposed parking lots. A second, 600-space lot and third main track will be constructed.	Final Design	\$ 139,381,862.00	Meeting scheduled with airport on 7/17/23 to review updates to the VRE Broad Run station south lot design. (July) Reevaluating property needs based on latest project design footprint and will revisit our new approach with FTA later in May. (June)
Brooke Station Improvements	Design and construction of a platform extension up to 700 feet to accommodate full-length VRE trains.	Development	\$ 9,461,455.00	VRE has reengaged this project and returned it to the CIP budget for future years. Project schedule updates pending input from various stakeholders. (June/July)
Crystal City Station Improvements	Improved station access and service reliability will result from a new station. The platform at the relocated station will allow for the simultaneous boarding of two full-length trains. The station's design will accommodate a future pedestrian/bicycle connection between the station and the airport.	Development	\$ 68,900,900.00	VRE advancing station design to 60%. Coordination ongoing with JBG, Amtrak, CSXT and VPRA. (June/July)
Franconia-Springfield Station Improvements	Extended platforms will be able to accommodate eight-car trains, eliminating the need for passengers near the rear to move to a different railcar when disembarking. Enhanced passenger safety and reduced station dwell times will result. The longer platforms will increase operational flexibility and capacity. The design will allow for a future third mainline track.	Final Design	\$ 25,351,100.00	Survey and soil borings performed. Data to be analyzed and used to advance design. Concurrently working through the Section 106 process. (June/July)

CAPITAL PROJECTS UPDATE

Project Name	Project Description	Current Phase	Budget	Project Notes
Fredericksburg Station Rehabilitation	The rehabilitation of platforms, stairs and bridges will improve passenger safety and better accommodate the boarding and disembarking of riders from VRE and Amtrak trains. New stairs will allow passengers to move between the platform and a parking lot without crossing the street at grade level. New signage, sidewalks, lighting and paint are included, as is installation of a low-clearance warning sign to a bridge that has experienced numerous vehicle strikes.	Construction	\$ 11,480,622.00	Concrete repair/coatings ongoing. Sandblasting/painting at station ongoing. Demo/formwork of existing east platform progressing. (July) Bridge Repair ongoing at Charles Street throughout April. (June)
HQ Office Renovations	The project will improve employee safety and security and maximize workspace efficiency at VRE Headquarters, and will include modifications to kitchen, supply room, mail room, bathroom/shower, office and cubicle areas in the north and south wings. The east wing will be modified to include additional offices.	Construction	\$ 250,000.00	Researching available systems for review with upper management. (July) Planning glass wall-enclosed work/meeting spaces adjacent to communications room. (June)
Leeland Road Parking Improvements	This project will expand the surface parking lot at the Leeland Road station by approximately 225 spaces to accommodate future demand.	Development	\$ 12,044,433.00	The project is funded through Virginia SMART SCALE. Funding is allocated for FY20 and 22. A funding agreement is pending. (June/July)
Leeland Road Station Improvements	Design and construction of a platform extension to accommodate full-length VRE trains.	Development	\$ 10,361,037.00	VRE has reengaged this project and returned it to the CIP budget for future years. Project schedule updates pending input from various stakeholders. (June/July)
L'Enfant Station Waiting Area	The existing platform at the L'Enfant station experiences overcrowding during the evening service period. The proposed project will create an additional paved area behind the existing platform, currently landscaped with shrubs and grass, for riders to wait for trains or to bypass riders waiting on the platform.	Final Design	\$ 350,000.00	District DOEE requested additional soil borings prior to permit issuance. Consultant preparing response that site is fill and no groundwater is present. (July) D&C team initiating STV GEC 8 construction management task order. (June)
L'Enfant Track and Station Improvements	Expansion of the VRE L'Enfant Station to provide two platform edges and serve full-length trains. Add a new mainline track between LE and VA interlockings.	Development	\$ 110,857,683.00	Request for proposals for engineering and environmental services issued with responses due 7/25. (July) Operations Board approved a preferred alternative. (June)

- continued next page -

CAPITAL PROJECTS UPDATE

Project Name	Project Description	Current Phase	Budget	Project Notes
Lifecycle Overhaul and Upgrade (LOU) Facility	Featuring 33,000 square feet of maintenance space, the LOU will allow VRE to cost-effectively maintain rolling stock, as well as systems and components, in a state of good repair. It will optimize maintenance and reduce costs by allowing the in-house replacement of items before they fail. The LOU will house two tracks that can hold up to four cars at one time and be equipped with a drop table and wheel truing machine. To maintain storage capacity within Crossroads Yard three new tracks are being constructed to provide enhanced flexibility to our operations crews for train movements and storage.	Construction	\$ 52,783,632.00	Building punch list mostly complete. Finishing remaining site work. (July) Fire alarm passed with final plumbing and building inspections this week. Certificate of Occupancy issued. (June)
Manassas Park Parking Expansion	A new garage will nearly double the 600 spaces currently available in the existing surface lot. A pedestrian bridge will provide grade-separated access to the existing platform and lot. The VRE station and garage are an integral part of the City Center Redevelopment District, the proposed transit-accessible high-density mixed-use town center of Manassas Park.	Construction	\$ 34,662,764.00	Notice to proceed (NTP) issued June 19. (July) Contract execution imminent with NTP anticipated in mid-June. (June)
Manassas Station Improvements	The project expands the VRE Manassas Station platform to serve full length trains and enhances pedestrian access to the station. Alternatives to increase the platform length to enable boarding and alighting from all passenger cars will be evaluated.	Development	\$ 9,125,000.00	This project is funded with I-66 OTB funding. Initiation of project planning pending completion of a Force Account Addendum with Norfolk Southern Railway. (June/July)
New York Avenue Midday Storage Facility	This new facility will store trains currently located in Amtrak's Ivy City coach yard, as Amtrak now has need for the storage tracks. The New York Avenue site, which is proximate to Washington Union Station, will be able to accommodate additional VRE trains.	Development	\$ 137,362,557.00	Received draft 30% layout reconfiguration for 8-car trains and shared with Amtrak on June 26. (July) Meeting held on Apr. 26 at Amtrak HQ to discuss the overall project and the MOU. Amtrak to resubmit to VRE based on those discussions. (June)
Potomac Shores Station	This new station, in a master-planned community in Prince William County, is being funded, designed, and constructed by the developer of Potomac Shores in consultation with VRE and other stakeholders. The station will be just a short walk from the town center. A new side platform will be constructed which is designed to be converted into an island platform in the future when the 3rd track is added to corridor operations.	Final Design	\$ -	Biddle Real Estate Ventures held groundbreaking ceremony for station parking garage in May. (June/July)

- continued next page -

CAPITAL PROJECTS UPDATE

Project Name	Project Description	Current Phase	Budget	Project Notes
Quantico Station Improvements	Service and safety will be enhanced through the construction of a new center platform, ADA-compliant pedestrian bridges, existing platform extension, and third track. These improvements will allow the station to accommodate additional passengers and more frequent and longer trains and operations flexibility with three boardable platform edges.	Construction	\$ 25,573,060.00	Retaining wall/ballast retainer wall both nearing completion. Platform concrete/canopy complete. Tower/pedestrian bridge/utilities completion ongoing. (July) Soil nail wall/ballast retainer wall nearing completion. Platform concrete/canopy complete. (June)
Real-Time Multimodal Traveler Information System	The passenger experience will be enhanced through the provision of real-time train arrivals. Software upgrades are required to provide these real-time data feeds and integrate them with VRE Mobile and other third-party apps and websites, as well as on display screens at VRE stations and other locations along the I-66 corridor.	Development	\$ 3,481,000.00	Scope of work with procurement. Drawings to be complete by 3/31/23. Contractor updating DIV specs. (June/July)
Security Cameras	Safety and security will be improved through the modernization and expansion of VRE's security camera system. New cameras will be placed at 22 locations.	Final Design	\$ 1,939,305.00	Operations Board to consider contract at July 21 meeting. (July) Bids due June 13. (June)
Variable Messaging System Replacement	The effectiveness of VREoperations will be enhanced through the installation of new variable message signs (VMS) throughout the rail system. The new VMS system will allow VRE to communicate multi-modal transit data and general transit feed specification data to VDOT for use in its VMS system.	Final Design	\$ 1,000,000.00	Scope of work with procurement. Drawings to be complete by 3/31/23. Contractor updating DIV specs. (June/July)
Woodbridge Station Improvements	Expanded platforms will allow passengers to access trains from all station tracks.	Development	\$ 2,740,618.00	The scope and schedule for this project is being coordinated with the commonwealth's Transforming Rail in Virginia initiative, post-Phase 2 project. (June/July)

For more information about VRE capital projects, visit <https://projects.vre.org/list>

This page intentionally left blank



VIRGINIA RAILWAY EXPRESS

1500 KING STREET, SUITE 202 • ALEXANDRIA, VA 22314 • 703.684.1001

VRE.ORG

