

VIRGINIA RAILWAY EXPRESS MAGAZINE

RIDE

NOVEMBER 2016



VRE PARTNERSHIPS

VIRGINIA RAILWAY EXPRESS
A better way. A better life.
www.vre.org





the
AMERICAN
way of life is

SHARPENING *my* CULINARY SKILLS
with a REAL CHEF.

Lively get-togethers are part of the American Dream. Just like the kind you'll enjoy at our new Social Barn. With a lounge, patio and culinary kitchen, it's the ideal spot to celebrate fun times. Come discover Potomac Shores' award-winning homes, exciting amenities, and the kind of experiences that turn neighbors into great friends.

Recreation Center with Swimming Pools (Now Open)

VRE Train Stop (2017)

On-Site Elementary School (2017)

Hiking & Biking Trails

Jack Nicklaus Signature Golf Course & Clubhouse

30 Miles from DC with 2 Miles of Shoreline



Homes from the upper \$400s

CALL OR VISIT THE GREETING HOUSE:
855-808-6051



DESTINATION *for a* LIFETIME

2175 Potomac River Blvd., Potomac Shores, VA 22026

PotomacShores.com



Features and products vary by community. Price, offers, financing and availability are subject to change without notice.



CONTENTS

RIDE MAGAZINE | NOVEMBER 2016

02 | PARTNERSHIPS

03 | SANTA TRAINS

04 | GAINESVILLE-HAYMARKET
EXTENSION PROJECT

05 | OUT & ABOUT

06 | SPOTLIGHT ON VRE
PAUL DEAN

06 | TRANSPORTATION CAREER FAIR

08 | TICKET OPTIONS

09 | PUZZLES AND SUDOKU



COURTESY REMINDER

➞ The train is a great place to relax and get caught up on work, sleep or your book. One thing it's not? Your home. Please keep those nail clippers and nose hair trimmers tucked away in your bag. Keeping up with your personal hygiene on the train can really gross out your fellow riders and compromise the cleanliness of the train.

Editor in Chief: Paul J. Dean
Magazine Design by Pulsar Advertising

Copyright © 2016 by Virginia Railway Express. All rights reserved. RIDE Magazine is a publication of the Virginia Railway Express, 1500 King Street, Suite 202, Alexandria, VA 22314. It has a distribution of approximately 11,700 copies monthly. Advertising in RIDE supports the production and printing cost. For comments, stories, suggestions, questions or advertising, please contact ride@vre.org.

Access RIDE online at www.VRE.org/RIDE



PLEASE RECYCLE THIS MAGAZINE



FROM THE CEO

It's around this point in the election cycle when many of us start to feel a little political fatigue. After all, it has been a very long election season (and it seems to be getting longer each time). But it also reminds us here at VRE of just how important our governmental partners – and local elected officials – are. We rely on our relationships with the federal, state, and local governments to bring our service to almost 20,000 daily riders. We simply could not operate as we currently do without the support of all these important governmental players.

VRE relies heavily on the federal government for a large portion of our capital funding. Each year, the U.S. Congress appropriates formula funds that are distributed to VRE through programs administered by the U.S. Department of Transportation. These critical dollars help us maintain our rail cars and other assets in a state of good repair and engage in capital projects to help VRE grow to meet the region's needs. We work very closely with the Federal Railroad Administration, which is responsible for safety and oversight of VRE, as well as being a funding partner for several capital projects. Without these partners, we would have a very difficult, if not impossible task, of providing the quality service we strive to offer riders every weekday.

At the state level, VRE works with the Commonwealth in a variety of ways. We rely on the Virginia General Assembly and the Administration to provide state funding to help us keep up with ridership growth and subsidize our daily operations. VRE regularly participates in the state's Smart Scale program which helps supplement federal funds for targeted capital improvements. Additionally, we work with Commonwealth Transportation Board, which does the actual funding allocations and establishes the administrative policies for Virginia's transportation system.

At the local level, VRE is a joint project of two parent organizations—the Potomac and Rappahannock Transportation Commission and the Northern Virginia Transportation Commission. We rely on our parent organizations to provide support in many facets of the operation, including administration, human resources, and finance; and it is the Boards of these two Commissions who are ultimately responsible for the service. The Master Agreement creating VRE set up an Operations Board, which consists of members from each of the two Commissions representing the jurisdictions that make up VRE —Spotsylvania County, the City of Fredericksburg, Stafford County, Prince William County, the City of Manassas, the City of Manassas Park, Fairfax County, Arlington County, and the City of Alexandria. Each of these local jurisdictions contribute funds to support VRE's operations, as well as provide VRE Board Operations members. Board members make recommendations to the Commissions on VRE management, financing and property acquisition. Along with general oversight, the Operations Board also approves VRE policies, fares, budgets and major spending decisions. We appreciate the hard work of our Operations Board members and the time they take to make VRE better for riders throughout the region. The Northern Virginia Transportation Authority, also run by local elected officials, provides guidance and grant assistance to help further advance our mission.

Finally, even though they aren't government agencies, we thank our other group of important partners—our host railroads. We rely on tracks built, owned, and operated by CSX, Norfolk Southern and Amtrak to safely carry our riders to and from their destinations each day. VRE is appreciative of our host railroads for their partnership in providing our service to the region.

Now much like an Oscar recipient trying to thank everyone before the orchestra starts playing, I don't have enough room to thank everyone who helps make VRE a success. There are many people and entities who support our efforts. We truly appreciate all of our partnerships and know we couldn't do it without their assistance.

I've said this dozens of times, but it bears repeating—transportation is a team effort and no one entity in this region can operate alone. I am proud of the relationships VRE has with its partners to offer safe, reliable, comfortable commutes to riders in the region.

Doug Allen

DOUG ALLEN
Chief Executive Officer
Virginia Railway Express



Follow Us



Like Us



DOUG ALLEN
Chief Executive Officer



VRE'S COMMUNITY PARTNERS KEEP THE TRAINS RUNNING ON TIME

Like many of our nation's commuter rail operators, the Virginia Railway Express relies on a whole host of partners to meet its mission of delivering safe, convenient and reliable commuter rail services that provide almost 20,000 trips every weekday. From providing critical resources to support operational costs, to funding new capital projects, as well as providing safety oversight and other support, these partners are the life blood of our vital services. Let's take a look at some the important roles that our partners play in support of VRE:

LOCAL JURISDICTIONS

VRE trains travel through nine Virginia localities — and each is an important partner for our service. Those jurisdictions include Fairfax, Prince William, Stafford, Arlington and Spotsylvania Counties, along with the cities of Manassas, Manassas Park, Fredericksburg, and Alexandria. Each jurisdiction contributes local dollars to help VRE operate its trains. These operating subsidies are important, because like all transit providers, fare revenue collected from riders does not cover all the costs of operating our service. However, fares do cover over 50% of the operating costs, which is high compared to other transit providers.

As many of our riders already know, VRE isn't an independent entity. We are a joint project of two parent organizations, the Potomac and Rappahannock Transportation Commission and the Northern Virginia Transportation Commission. VRE relies on our parent organizations to provide support in many facets of the operation, including administration, human resources, and finance; and it is the Boards of these two Commissions who are ultimately responsible for the service. The Master Agreement creating VRE set up an Operations Board, which consists of members from each of the two Commissions representing the jurisdictions that make up VRE. Board members are responsible for general oversight and making recommendations to the Commissions on VRE management, financing and property acquisitions. The Operations Board also approves VRE policies, fares, budgets and major spending decisions. We appreciate the hard work of our Operations Board members and the time they take to make VRE better for riders throughout the region.

COMMONWEALTH OF VIRGINIA

Here is a good trivia question for VRE riders - how many Virginia House of Delegates and Senate districts are served by VRE? The answer is 27! VRE's Manassas and Fredericksburg lines cross through 17 House of Delegates districts and 12 Commonwealth Senate districts. The legislators that serve these districts, along with those from other parts of the state that serve on important finance and transportation committees, play an important role in ensuring VRE's success. The Commonwealth of Virginia is an important funding partner, providing both appropriations to support train operations, as well as making funds available for maintenance and long term capital improvements.

On the Administrative level, VRE works very closely with the Virginia Department of Rail and Public Transportation (DRPT), which performs a number of services for our rail line. DRPT facilitates the distribution of state grants to VRE, helps advance capital projects

along the rail lines, and often helps advance important infrastructure projects that benefit our operations regionally. DRPT also works with our freight rail partners, Norfolk Southern, CSX and Amtrak to help negotiate access to the rail lines and advance improvements to the rails and bridges along the line. Another important State organization is the Commonwealth Transportation Board (CTB). This 17-member body consists of state and local transportation officials appointed by the governor. The CTB allocates state funding for public transportation projects across the state. Currently, the CTB is engaged in the important work of developing future transportation financing policies for the state.

THE FEDERAL GOVERNMENT

The third critical partner for VRE is the Federal Government. Congress, together with the U.S. Department of Transportation provides financial support, safety oversight, and many other important functions to help VRE train operations. VRE trains run through 5 Congressional Districts in Virginia (currently served by Representatives Connolly, Wittman, Brat, Beyer, and Comstock), and is also served by the Commonwealth's two U.S. Senators, Mark Warner and Democratic Vice Presidential nominee Tim Kaine. Each of these members of Congress deserve special recognition for their work on the passage of the groundbreaking "FAST-ACT" last year. The first long term federal funding bill passed in a decade, the legislation provides annual grants to VRE for capital asset maintenance and major capital projects, such as the replacement of rolling stock and track and station improvements.

At the U.S. Department of Transportation, both the Federal Railroad Administration (FRA) and the Federal Transit Administration (FTA) are important partners. The FRA is the major safety oversight agency which works closely with the nation's rail providers to manage the national rail network. For example, the FRA helps railroads to implement new safety technologies such as positive train control systems; and works as a partner to ensure that passenger and freight rail providers that share the same track systems are working together to operate in a safe manner.

The FTA is the major agency that distributes the funds provided by Congress to the local transit providers, including VRE. We also work closely with the FTA to ensure that our system complies with the myriad of federal laws and regulations that dictate transit operations to ensure that federal dollars are being spent to advance our national transportation policy goals.

NON-GOVERNMENTAL ORGANIZATIONS

In addition to the local government agencies described above, VRE has several other partners that help advance our mission. First, we must recognize the important role of the railroads that own the tracks that VRE operates on. Norfolk Southern, CSX and Amtrak all provide VRE access to their network of tracks, and act as partners to ensure the safe maintenance of the tracks and rights-of-way. In addition, Amtrak owns and maintains the platforms at Union Station that VRE riders use. We are members of the Virginia Transit Association, the American Public Transportation and the American Association of Railroads, all of whom help advance our policy and operational goals.

As you can see, the VRE would not be possible without a whole host of dedicated partners. The next time you run into a local, State, or Federal elected official, tell them you ride the VRE and how important the service is to you, and thank them for their important role in ensuring VRE's success.

GET IN THE HOLIDAY SPIRIT WITH VRE SANTA TRAINS AND TOYS FOR TOTS COLLECTION

It's (already) that time of year again! Start your holiday season off right by participating in two special VRE holiday events.

Mark your calendar for Monday, Nov. 21 at 9 a.m.—that's when tickets go on sale for this year's VRE/Operation Lifesaver Santa Trains. The ever-popular event, which attracted more than 10,000 people in 2015, will take place on Dec. 10 and include a train ride with appearances by Santa and Mrs. Claus to promote rail safety and Operation Lifesaver's "See tracks, think train" campaign. Santa's helpers will be on hand to give out plenty of goodies to children while choral groups serenade attendees outside stations.

Tickets for the Santa Trains are \$5 each at the ticket outlets and \$6 each online with net proceeds benefiting Operation Lifesaver. Payments at the ticket outlets may be made with cash or check payable to "VRE." Online purchases can be made with a credit card. Please note that regular VRE tickets will not be honored for Santa Trains. All passengers, regardless of age, must have tickets, and tickets must be purchased in advance, as they will not be sold at the station the day of the event. Additional information may be found at www.VRE.org.

In addition to Santa Trains, VRE and many of its riders participate each year in the Toys for Tots program, which donates toys and gifts to underprivileged children during the holiday season. On Wednesday, Dec. 7, VRE morning commuters may bring along a new toy, a gift card, or a monetary donation (checks can be made out to "Toys for Tots"). The toys may be left in the seats upon rider departure, but gift cards and monetary donations should be given directly to a train conductor for safe keeping. Riders that are also participating in the Santa Trains event may bring their Toys for Tots donations to that event on Dec. 10.

All donations collected that week will be delivered to Toys for Tots for disbursement before Christmas. Last year, VRE collected more than \$15,000 in donations and several truckloads of toys from you, our very generous riders. Let's see if we can top those numbers this year!



Imagine your home, totally organized!



Call for a free in home design consultation and estimate

800-293-3744 VREM **703-330-8382**

www.closetsbydesign.com Follow us [f](#) [t](#) [v](#)

Licensed #VA 2705068445 #MD 131690 #DC 420214000077 and Insured

2016 © All Rights Reserved. Closets by Design, Inc.



Custom Closets, Garage Cabinets
Home Offices, Pantries, Laundries
and Hobby Rooms

40% Off Plus Free Installation

40% off any order of \$1000 or more.
30% off any order of \$700 or more.
Not valid with any other offer. Free
installation with any complete unit order
of \$500 or more. With incoming order,
at time of purchase only.



 **Closets
byDesign**

NEW INFORMATION AVAILABLE FROM VRE GAINESVILLE-HAYMARKET EXTENSION STUDY

As VRE's study continues for the proposed Gainesville-Haymarket Extension, additional information on potential ridership, cost and station sites to expand VRE Manassas Line service was presented to the VRE Operations Board at its Oct. 21, 2016 meeting. The same information will be offered at a community meeting on Dec. 7, 2016 at 6 p.m. at Piney Branch Elementary School (8301 Linton Hall Rd., Bristow).

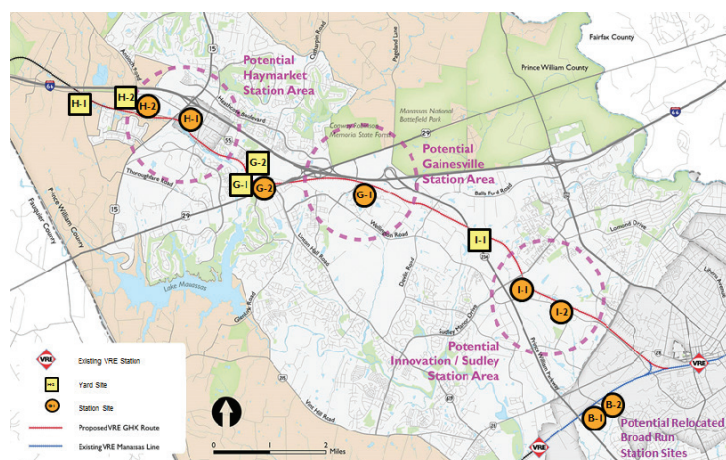
Four alternatives for Manassas Line improvements and service expansion are under evaluation. Each would increase the number of trains from 16 to 22 per day, which would increase the frequency of VRE service from about every 30 minutes in the mornings and evenings to approximately every 20 minutes. One alternative is to expand by relocating the existing Broad Run Station to a new location on the other side of Manassas Regional Airport, near Godwin Drive, rather than extending VRE towards Haymarket. The existing VRE equipment maintenance and storage facility at Broad Run would be expanded to store the additional trains in service. Three other alternatives that extend VRE service towards Haymarket via the Norfolk Southern Railway (NS) B Line are also being considered: extension to Innovation Park near Sudley Manor Drive; extension and new stations at Innovation Park and the Gainesville area; and extension to the Haymarket area and three new stations at Innovation Park, Gainesville, and Haymarket. A new VRE equipment maintenance and storage facility would be built on the B Line beyond the last station for each extension alternative (in the Innovation, Gainesville or Haymarket areas).

VRE staff has and will continue to share this information with the VRE Operations Board, local governing bodies, GHX stakeholder committees, and the public while also seeking their feedback about VRE expansion alternatives. After the December community meeting, the VRE Operations Board will be asked to recommend one or more alternatives for further analysis,

including National Environmental Policy Act studies and more detailed engineering. The environmental studies and preliminary engineering activities would begin in early 2017 and conclude by early 2018.

NS must approve any VRE improvements or service expansions that use NS right-of-way. VRE does not currently have an agreement with NS for any of the alternatives being evaluated. As study of the various expansion alternatives continues, VRE will coordinate the proposed improvements with NS and work to obtain their formal approval.

To learn more about the GHX study, including information about the upcoming community meeting, FAQs, or to provide comments on the alternatives under consideration, visit www.vre.org/ghx and stay connected by liking VRE GHX on Facebook and following the study on Twitter at @VRE_GHX.



Potential station and yard Sites for VRE expansion

ESTIMATED MANASSAS LINE RIDERSHIP, CAPITAL AND OPERATING COSTS FOR EACH EXPANSION ALTERNATIVE

	EXISTING MANASSAS LINE SERVICE	BROAD RUN TERMINUS EXPANSION	B LINE EXTENSION		
			INNOVATION TERMINUS	GAINESVILLE TERMINUS	HAYMARKET TERMINUS
DAILY TRAINS	16	22	22	22	22
DAILY MANASSAS LINE RIDERSHIP (2040)	10,220	15,350	15,820	16,100-16,340	16,460
CAPITAL COST (\$2016)	N/A	\$345M	\$580-633M	\$572-631M	\$612-660M
ANNUAL OPERATING COST (\$2016)	\$29 M	\$36 M	\$37 M	\$40 M	\$45 M

1Gainesville terminus alternatives with 2 and 3 stations are under consideration. 2Capital costs vary depending on station, track and yard locations.

10th Annual Alexandria Film Festival

Thursday-Sunday, Nov. 10-13 (all day)

AMC Hoffman 22 Theater

206 Swamp Fox Rd. Alexandria, VA

The Alexandria Film Festival offers an enriching cinematic opportunity for filmmakers and film lovers alike by bringing high quality, diverse and thought-provoking short and feature-length films to the area. www.alexfilmfest.com

National Veterans Day Ceremony

Friday, Nov. 11, 11 a.m.

Arlington National Cemetery

Spend your Veteran's Day honoring the men and women who served our country at the National Veterans Day Ceremony. You'll experience the wreath-laying ceremony at the Tomb of the Unknown Soldier followed by a ceremony inside the Memorial Amphitheater. Be sure to arrive early. www.va.gov/opa/vetsday

Downtown Holiday Open House 2016

Saturday & Sunday, Nov. 12 & 13 (all day)

706 Caroline St.

Fredericksburg, VA

Celebrate the official start of holiday shopping in Fredericksburg during the Downtown Holiday Open House. Windows are decorated, holiday music is playing and good cheer is in the air! This year features free wrapping stations for all the goodies you purchase. www.visitfred.com

41st Annual Del Ray Turkey Trot

Thursday, Nov. 24, 9 a.m.

George Washington Middle School

1005 Mt. Vernon Ave.

Alexandria, VA

Join the Thanksgiving morning tradition! With over 6,000 runners, and some of the fastest elite runners on the east coast, as well as stroller and dog divisions, the Turkey Trot is a great way to start your Thanksgiving morning. www.visitalexandriava.com

12th Annual Downtown Holiday Market

Nov. 25-Dec. 23, noon-8 p.m. (daily)

8th and F Streets, NW

Gallery Place-Chinatown Metro stop

Washington, D.C.

Bringing a unique and festive shopping "village" to the heart of Downtown DC, the market features more than 150 regional artisans, crafters and boutique businesses of ethnically produced goods. www.downtownholidaymarket.com



Wolf Trap Holiday Sing-A-Long

Saturday, Dec. 3, 4-6 p.m.

Wolf Trap Filene Center

1551 Trap Rd.

Vienna, VA

This annual musical celebration hosts a performance by the United States Marine Band and a Sing-A-Long of Christmas carols and Hanukkah songs with choir and vocal groups from the metropolitan Washington area. Admission is free but attendees are encouraged to bring an unwrapped toy for Toys for Tots. www.wolftrap.org

Fredericksburg Christmas Parade

Saturday, Dec. 3, 5:30 p.m.

Downtown Fredericksburg, VA

The City of Fredericksburg, Virginia Parks & Recreation Department and Huber Motor Cars are excited to fill the streets with Christmas cheer at the 2016 Christmas Parade! www.fredericksburgchristmasparade.com

Winter Wonderland Train Show

Dec. 14-18, 5-8 p.m.

9419 Battle St.

Manassas, VA

This Winter Wonderland Train Show is great for kids or the kid at heart. The event is free and features miniature train towns fully decked out for Christmas. Santa also plans on stopping by for a visit. www.visitmanassas.org

SPOTLIGHT ON PAUL DEAN

MANAGER OF GOVERNMENT RELATIONS AND PUBLIC AFFAIRS



M eet Paul Dean, VRE's new Manager of Government Relations and Public Affairs. Paul brings more than 20 years of professional transit related experience to VRE and is looking forward to playing a role in shaping the future of passenger rail in Northern Virginia.

As a veteran lobbyist, legal professional and strategic communications specialist, Paul is well positioned to help advance VRE's priorities at the federal, state and local levels. He will be working with VRE's partners (and funders) at all levels of government to help find sustainable funding sources for future operations and capital projects. In addition, Paul will serve as VRE's liaison to Congress, the U.S. Department of Transportation, the Commonwealth of Virginia, the Virginia Assembly and VRE's local jurisdictions to ensure that these important partners are working together to continue our safe and efficient operations while looking to the future to meet our growing ridership demands. He will also serve as VRE's media relations officer and help execute VRE's marketing campaigns.

"The one thing that I have found remarkable since joining VRE is the sheer number of organizations that have an important role in allowing our commuter rail to serve Northern Virginia on a daily basis," Paul said. "From our parent agencies of NVTC and PRTC and our local counties and cities, to the State of Virginia and the federal government, each is critical in ensuring that we have the necessary resources and operating support to do our job."

Paul has lived in Northern Virginia and worked in the region for most of his adult life. Upon graduating from Harvard University with a History degree, he moved to Washington to work on Capitol Hill, serving as a Congressional aide in both the U.S. Senate and House of Representatives. After graduating from the George Mason School of Law, he worked in private practice at a downtown law firm, where he helped transit systems and local governments generate federal resources for local infrastructure projects. Prior to joining VRE, he served as the Director of Government Affairs for the American Public Transportation Association (APTA), serving as the transit industry's chief lobbyist on Capitol Hill. He was named a "Top 40 Under 40" transit professional by Mass Transit Magazine in 2009, and is a graduate of the prestigious "Leadership APTA" transit professional development program.

"I did not own my own car until I was 30 years old, and spent most of my career commuting to work on public transportation," Paul said. "I know first-hand the importance of having good mobility options in a crowded region, and am proud to work for VRE to help advance that cause."

Paul lives with his wife Kathleen and their four children in the Mt. Vernon area of Fairfax County. When not out advocating for better public transportation systems, he can usually be found at the local ball fields or gyms, coaching whatever youth sport happens to be in season. He is an avid history buff and looks forward to exploring the many local battlefields and historic sites that are accessible by VRE.

VRE PARTICIPATES IN VDOT'S 12TH ANNUAL TRANSPORTATION CAREER FAIR

L ast month, VRE joined 99 other transportation-related exhibitors at the Prince William County Fairgrounds, all committed to the same goal—introducing high school students to transportation careers and getting them excited about those prospects.

About 1,500 students in grades 10 through 12 registered for the 2016 career fair, the most since the event began more than a decade ago. Aside from the 100 exhibitor booths, students also experienced 175 pieces of heavy construction equipment on display at the event.

"Attendance at this event grows each year, as the reputation of the career fair reaches across the northern Virginia district and beyond," said VDOT Northern Virginia District Civil Rights Manager Leslie Martin, who helped plan, organize, and run the event. "Students attending this year came from as far away as Petersburg and Greene County."

Since its inception, the event has introduced students to transportation career options they may have never considered before. Additionally, it helps to encourage and prepare students for careers in

transportation-related fields such as engineering, architecture, technology, environmental engineering, construction, and support services. The event exposes students to the industry as an option when they are deciding on their college major or when they need to make plans immediately after high school graduation. The intended end result is a more robust future workforce in transportation-related careers, which benefits society as a whole.

This year's VRE exhibit featured a safety theme targeted to the high-schoolers. Train tracks are a common sight for many of these students, so VRE both educated students on the dangers of trespassing on tracks and simultaneously talked about all the career options pertaining to railroads. VRE project manager Norine Walker, asked students to sign a pledge to always stay clear of railroad tracks (unless on a train, of course). By the end of the day, the pledge sheet, signed in gold, silver and copper ink was nearly full.

This is another effort of getting the word out about trains and safety. Coupled with VRE's safety blitzes it helps to expose the public to the message of "See tracks, think trains."



TRAVELING SAFELY IN THE NEW OLD-FASHIONED WAY

It's the most wonderful (and busiest) time of the year. Which means it's even more important to keep an eye out for suspicious objects or behavior while traveling.

Unusual behavior can include people staying at train stations for long periods of time without getting on, an individual who seems fixated only on a particular object or location, or people entering unauthorized areas at train or bus stations.

Suspicious objects may include bags, boxes, or packages left unattended – especially if partially hidden or in unusual locations. These bags or briefcases may simply be forgotten or discarded items. But at this time of year, it's better to be safe than sorry.

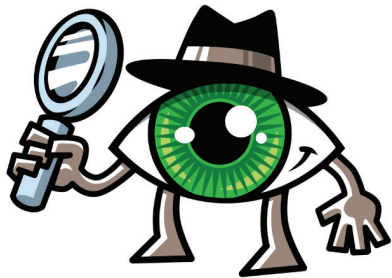
IF YOU SEE SOMETHING, SAY SOMETHING.™

If you do see something suspicious, please report it immediately. Take detailed notes, such as the train number or station name. Then notify a police officer or transit personnel. If you can't easily locate someone in uniform, call the police at either 1-877-4VA-TIPS or 911.

Save your local police phone number into your contacts for quick future reference. By staying aware of your surroundings, you can make this holiday season truly the most wonderful time of the year.

To keep your holiday season looking safe, everywhere you go, visit [SecureTransit.org](https://www.securetransit.org).

This ad was purchased with funds provided by the US Department of Homeland Security.



HOLIDAY CALENDAR

NOV. 11	VETERAN'S DAY, NO VRE SERVICE
NOV. 21	SANTA TRAIN TICKETS ON SALE AT 9:00 A.M.
NOV. 24	THANKSGIVING, NO VRE SERVICE
NOV. 25	DAY AFTER THANKSGIVING, "S" SCHEDULE
DEC. 7	LEAVE TOYS FOR TOTS ON YOUR MORNING TRAIN
DEC. 10	SANTA TRAINS/TOYS FOR TOTS COLLECTION
DEC. 26-30	"S" SCHEDULE

RAIL TIME PUZZLES

ACROSS

- 1 Feign feelings
6 *La Traviata* composer
11 Brewer's buy
15 Bryn ___ College
19 47th Vice President
20 Omelet ingredient
21 Succulent plant
22 Ending for buck
23 Playing Chopin pieces poorly
25 Sensors, essentially
27 Largest glandular organ
28 Unwilling to bend
30 Helpful group
31 Canine sound
34 Nearly unobtainable
35 Town near Santa Fe
36 Be deserving of
38 Starfish habitats
40 Very, to 6 Across
41 Carpentry tools
45 Recently
46 "Is that stringed clatter necessary?"
48 What ice cream might top
49 Pop singer Furtado
50 Gentlemen
51 Got too hot
53 Cupid alias
54 Ballpark accommodation
58 Compass reading
59 Maine's state tree
60 Confronts
62 Entomology specimen
64 One on a track
65 UK flyers
67 B-to-B bravery
71 Med. show sets
72 Mideast region, poetically
74 Williams at Wimbledon

75 "Be quiet!"

- 77 CPR class venue
78 Ending for "most" words
80 Shades seen at sunset
82 Future dr.'s exam
85 Of projectile motion
88 Apr. addressee
89 Invitation heading
90 Hydrocarbon ending
91 Single portion of an anthem
95 Source of steam
96 Comparatively cool
98 In the course of
99 Asset excess
100 Editor's directive
101 Kate, in *Titanic*
102 Ice Age novelist
103 Unseal, in Shakespeare
104 Northwest capital
107 Less imaginative
109 Tight spots
111 Evaluation standard
113 "I didn't play 'Moonlight' that terribly!"
118 Play parts
119 Flaubert heroine
120 Supercharged engine
121 Come out with
122 Prayer pronoun
123 Flight formations
124 124 Across winner Hammerstein
125 Farfalle or fusilli

DOWN

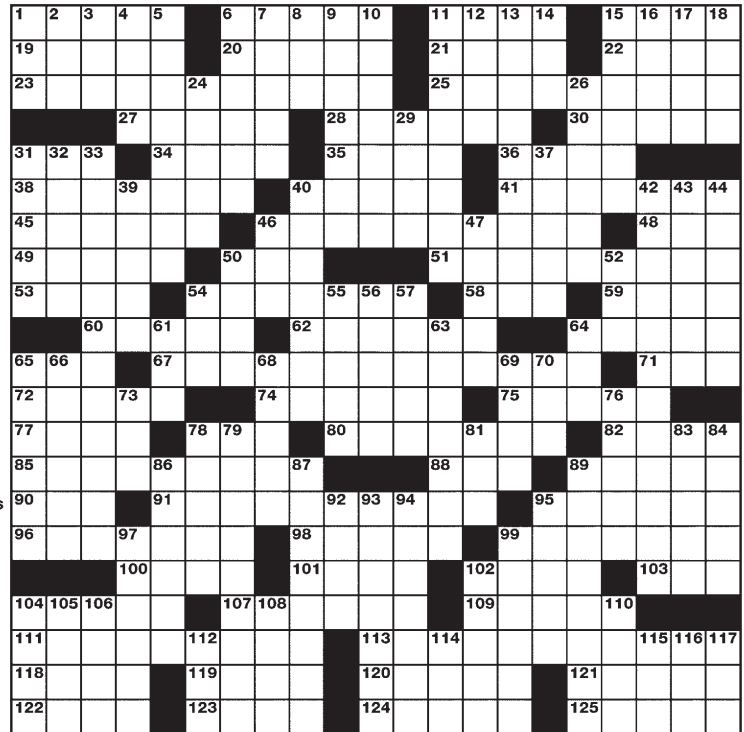
- 1 Subside
2 Farrow of film
3 Bizarre
4 Blue shade
5 Full measure
6 Electorate

7 Accustom (to)

- 8 Free (of)
9 Schoolyard comeback
10 Load, as an app
11 1810s First Family
12 Sir ___ Guinness
13 Governmental games
14 10K souvenir
15 Montréal mornings
16 Yankee retiree nickname
17 Had on
18 *Friends* guy
24 Escape successfully
26 Legendary flier
29 *The Godfather* composer Nino
31 Simultaneously
32 Send elsewhere
33 What typos on scores should do
37 Frozen foods, e.g.
39 Lightweight wood
40 Written letter
42 Overly bright strings
43 Picnic fare
44 Meals with matzoh
46 Exasperate
47 Be a debtor of
50 Emcee
52 MPG monitor
54 Bird's bill: Fr.
55 First *calendario* month
56 Son of Jacob
57 Pop singer ___ Marie
61 Reluctant to give details
63 Straining to see
64 LBJ successor
65 Foster Grant rival
66 Upscale designer
68 Sean of *Lord of the Rings*

CREATORS SYNDICATE © 2016 STANLEY NEWMAN

WWW.STANXWORDS.COM 10/23/16

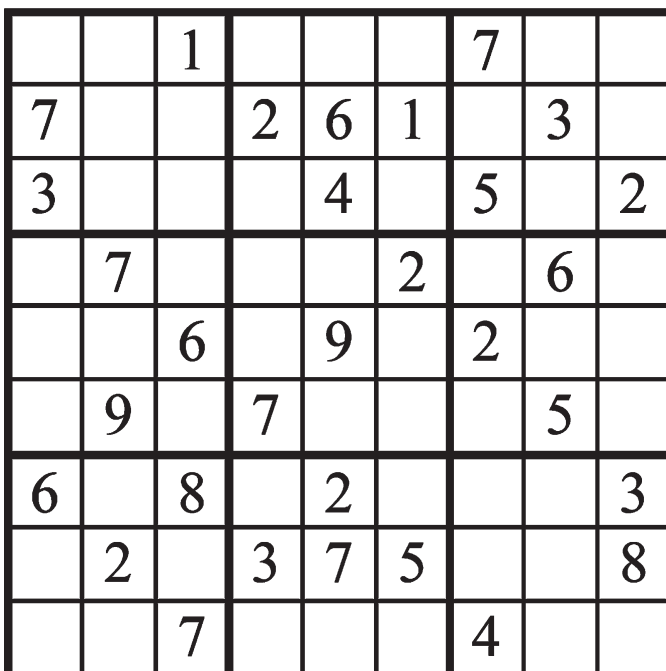


- 69 Puts frosting on
70 Swedish-based airline
73 Bank-acct. stat
76 Groovy acknowledgment
78 Big name in mascara
79 Invitation info
81 Test for some Ph.D. seekers
83 Have risen for the day
84 Far from windy

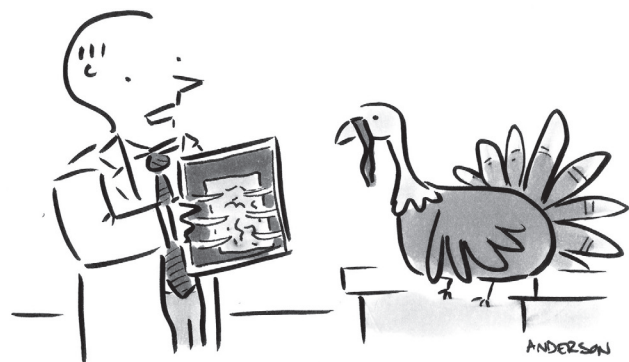
- 86 Self-conscious question
87 Russian empresses
89 Soccer prize
92 Plenty
93 Is vanquished by
94 Burdensome
95 Lake ___ Vista, FL
97 African fly
99 Gentleman caller
102 Addis ___, Ethiopia

- 104 "Outta here!"
105 Dramatic entryway
106 Diet brand descriptor
108 Vatican surround
110 Mexican mtle.
112 Increase, with "up"
114 Atomic energy org.
115 Neuter possessive
116 Shook hands with
117 The end of an __

SUDOKU



© MARK ANDERSON, WWW.ANDERSTOONS.COM



"We found the problem - all of your internal organs are in this little bag."

A



B



WHICH BAG LOOKS SUSPICIOUS?

C



**DIFFICULT
CHOICE,
RIGHT?**

(THE ANSWER IS ALL OF THE ABOVE)

**REPORT ALL UNATTENDED BAGS
AND UNUSUAL BEHAVIOR TO
POLICE OR TRANSIT PERSONNEL.**



1-877-4VA-TIPS

**IF YOU SEE SOMETHING,
SAY SOMETHING.™**

securetransit.org

★ UNITED WE STAND ★

Purchased with funds provided by the US Department of Homeland Security