

# CEO REPORT

JULY 2021



# OUR MISSION

The Virginia Railway Express, a joint project of the Northern Virginia Transportation Commission and the Potomac Rappahannock Transportation Commission, will provide safe, cost-effective, accessible, reliable, convenient, and customer responsive commuter-oriented rail passenger service. VRE contributes to the economic vitality of its member jurisdictions as an integral part of a balanced, intermodal regional transportation system.



# TABLE OF CONTENTS

CEO REPORT | JULY 2021

## TABLE OF CONTENTS

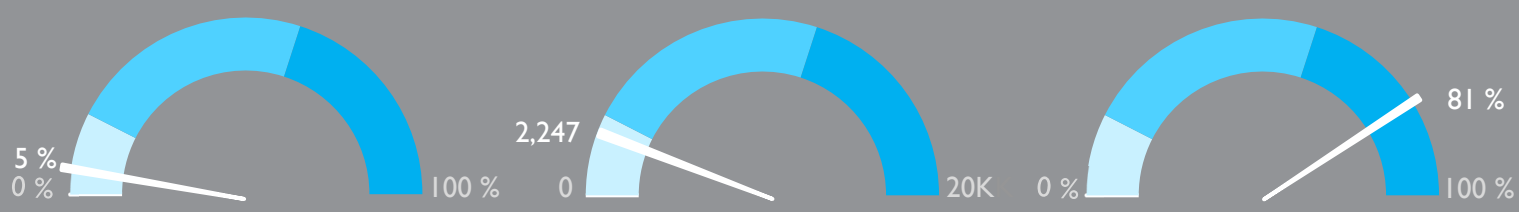
- SUCCESS AT A GLANCE ..... 3
- ON-TIME PERFORMANCE ..... 4
- AVERAGE DAILY RIDERSHIP ..... 6
- SUMMONSES ISSUED ..... 7
- TRAIN UTILIZATION ..... 8
- PARKING UTILIZATION ..... 9
- FACILITIES UPDATE.....10
- UPCOMING PROCUREMENTS .....11
- CAPITAL PROJECTS UPDATES .....12
- PROJECTS PROGRESS REPORT .....14



VIRGINIA RAILWAY EXPRESS  
A better way. A better life.



# PERFORMANCE AT A GLANCE



**PARKING UTILIZATION**

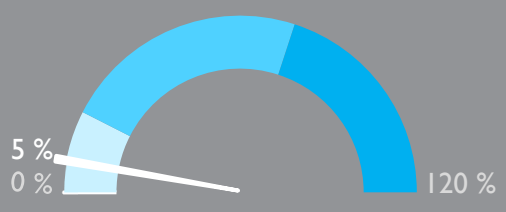
The total number of parking spaces used in the VRE system during the month, divided by the total number of parking spaces available.

**AVERAGE DAILY RIDERSHIP**

The average number of boardings each operating day inclusive of Amtrak Step-Up boardings and reduced, "S" schedule, service.  
Same month, previous year: 822

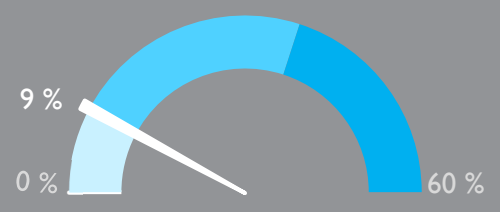
**ON-TIME PERFORMANCE**

Percent of trains arriving at their destination within 5 minutes of the schedule.  
Same month, previous year: 93%



**SYSTEM CAPACITY**

The percent of peak hour train seats occupied. The calculation excludes reverse flow and non-peak hour trains.



**OPERATING RATIO**

*Through May 2021*

Year-to-date operating revenues divided by year-to-date operating expenses, which represents the share of operating costs paid by the riders.  
board-approved goal: 52%

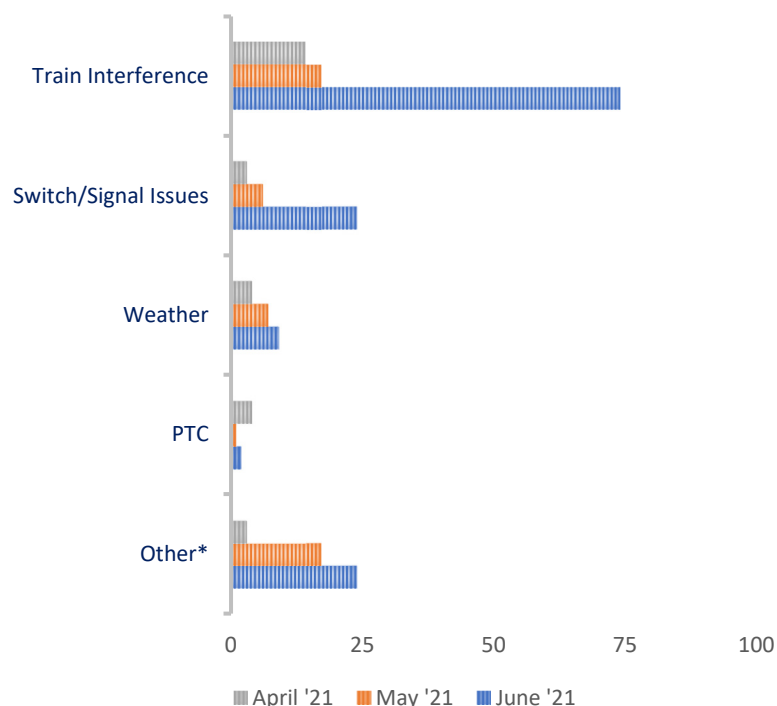
**June 2021**

# ON-TIME PERFORMANCE

## OUR RECORD

	June 2021	May 2021	June 2020
Manassas Line	77%	86%	89%
Fredericksburg Line	85%	87%	97%
Systemwide	81%	87%	93%

## PRIMARY REASON FOR DELAY



VRE operated 700 trains in June. Our on-time rate for June was 81 percent.

One hundred thirty-three trains arrived more than 5 minutes late to their final destinations. Of those late trains, 81 were on the Manassas Line (61 percent), and 52 were on the Fredericksburg Line (39 percent).

The additional 14 daily VRE trains, as we returned to a full-service schedule, in tandem with Amtrak ramping up service, caused a spike in congestion-related delays. Weather-related delays ticked up slightly and there was a significant rise in signal issues. All this, in conjunction with several isolated delays classified as “Other,” reduced OTP below desirable levels.

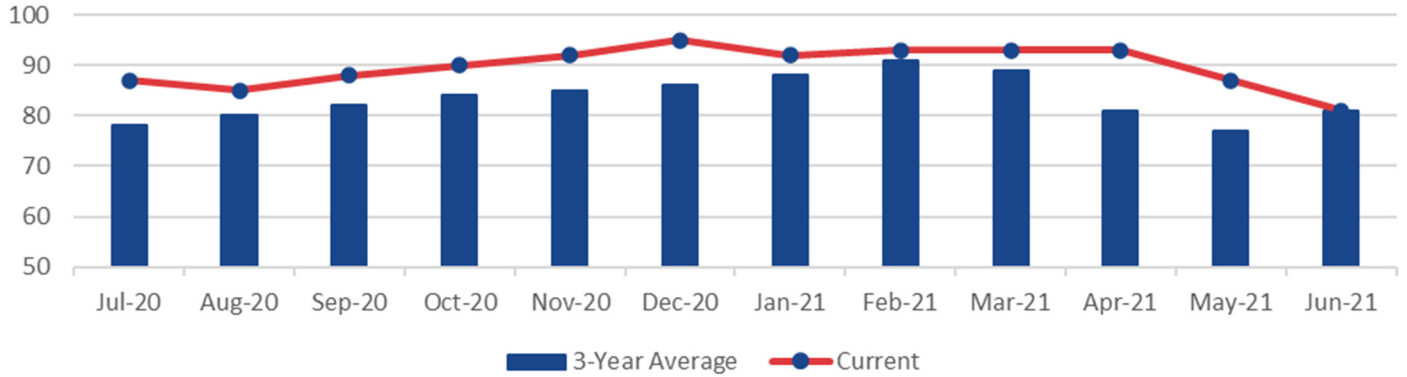
\*Includes trains that were delayed due to operational testing and passenger handling.

## LATE TRAINS

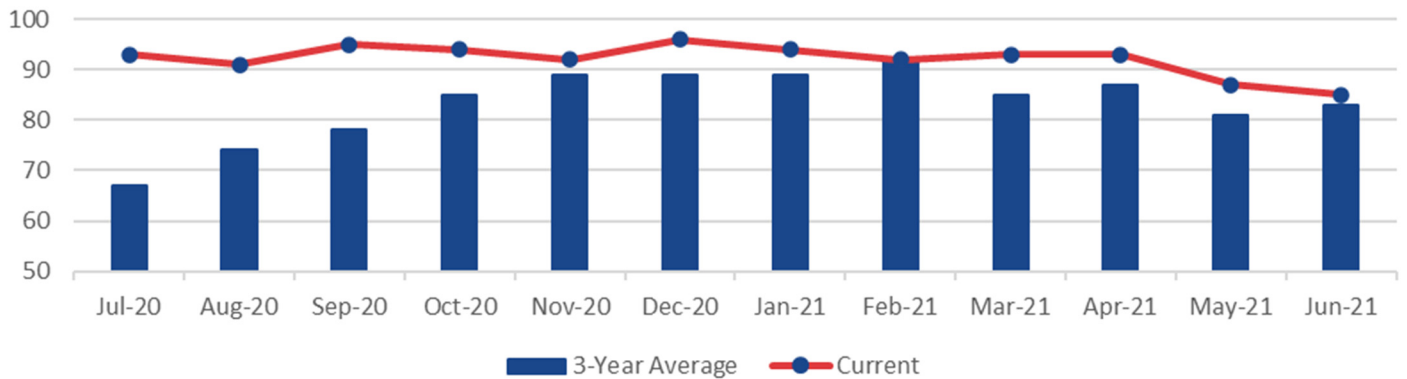
	System Wide			Fredericksburg Line			Manassas Line		
	Apr	May	June	Apr	May	June	Apr	May	June
Total late trains	28	48	133	16	26	52	12	22	81
Average minutes late	14	17	17	16	14	16	11	21	18
Number over 30 minutes	3	5	18	3	2	7	1	3	11
Heat restrictions	5	8	11	5	5	11	0	0	0

## ON-TIME PERFORMANCE

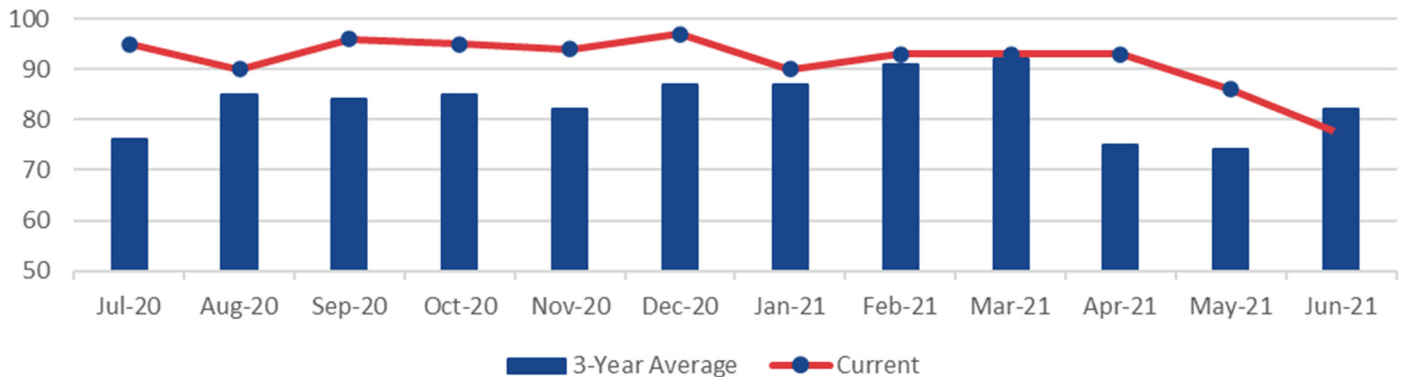
### VRE SYSTEM



### FREDERICKSBURG LINE

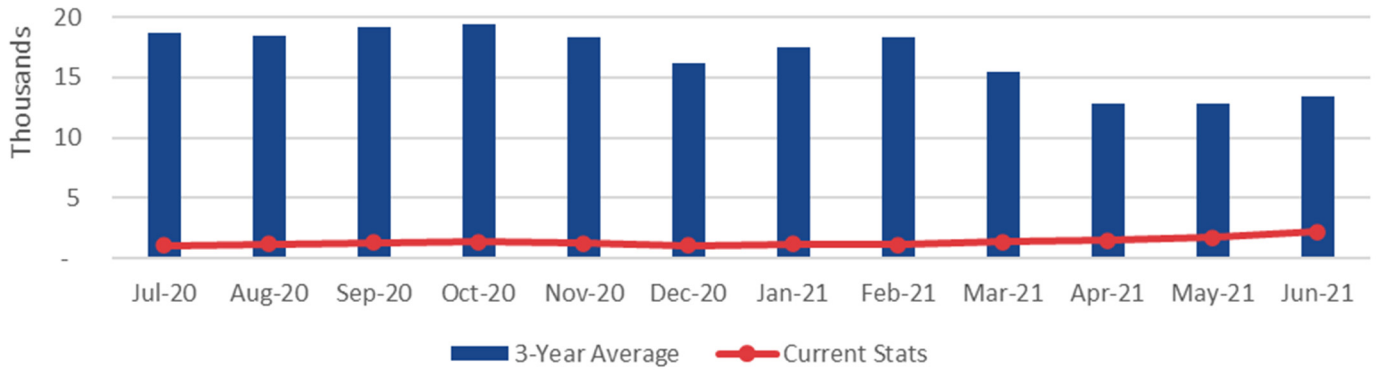


### MANASSAS LINE

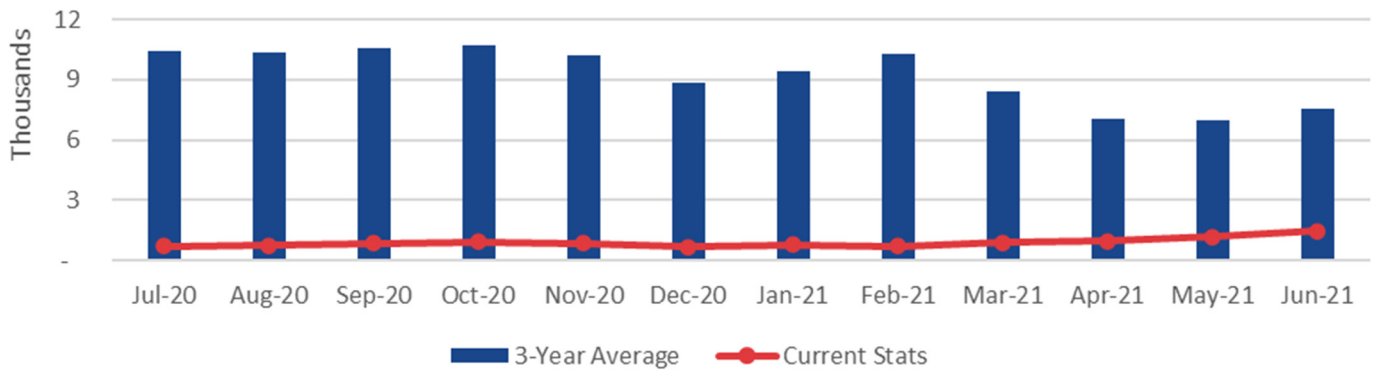


# AVERAGE DAILY RIDERSHIP

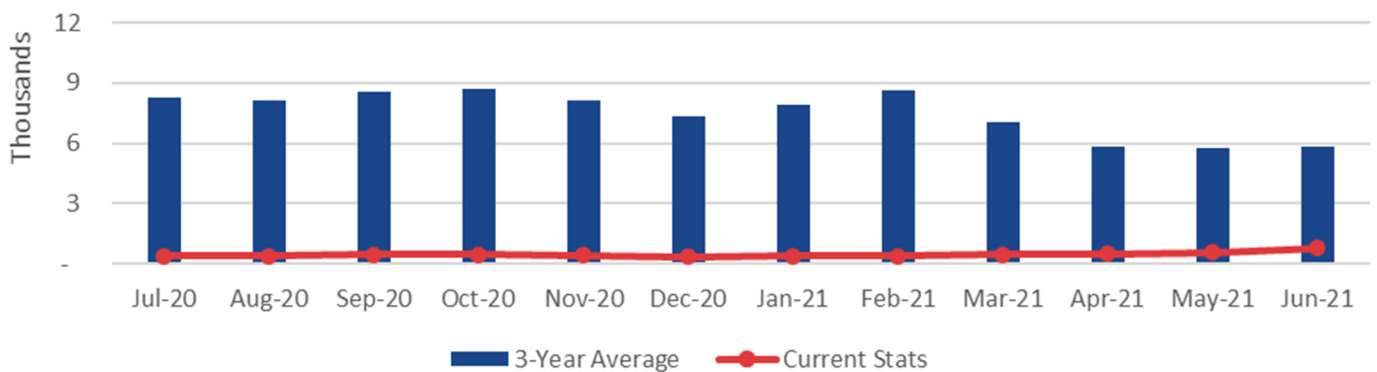
## VRE SYSTEM



## FREDERICKSBURG LINE



## MANASSAS LINE



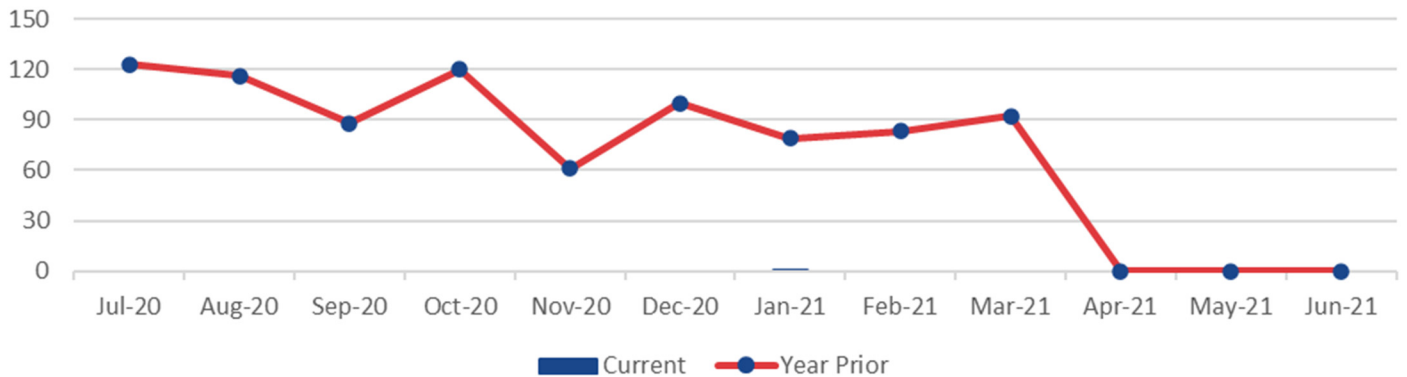
## RIDERSHIP UPDATES

Average daily ridership in June was 2,247. As of June 1, we returned to full service, running 32 trains daily.

	June 2021	May 2021	June 2020
Monthly Ridership	35,232	32,956	10,154
Average Daily Ridership	1,762	1,498	508
Full Service Days	0	0	0
“S” Service Days	20	22	20

## SUMMONSES ISSUED

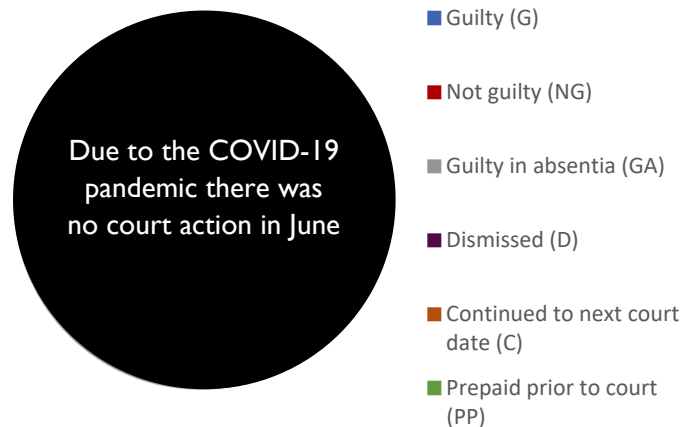
### VRE SYSTEM



### SUMMONSES WAIVED OUTSIDE OF COURT

Reason for Dismissal	Occurrences
Passenger showed proof of a monthly ticket	0
One-time courtesy	0
Per the request of the conductor	0
Defective ticket	0
Per ops manager	0
Unique circumstances	0
Insufficient information	0
Lost and found ticket	0
Other	0
<b>Total Waived</b>	<b>0</b>

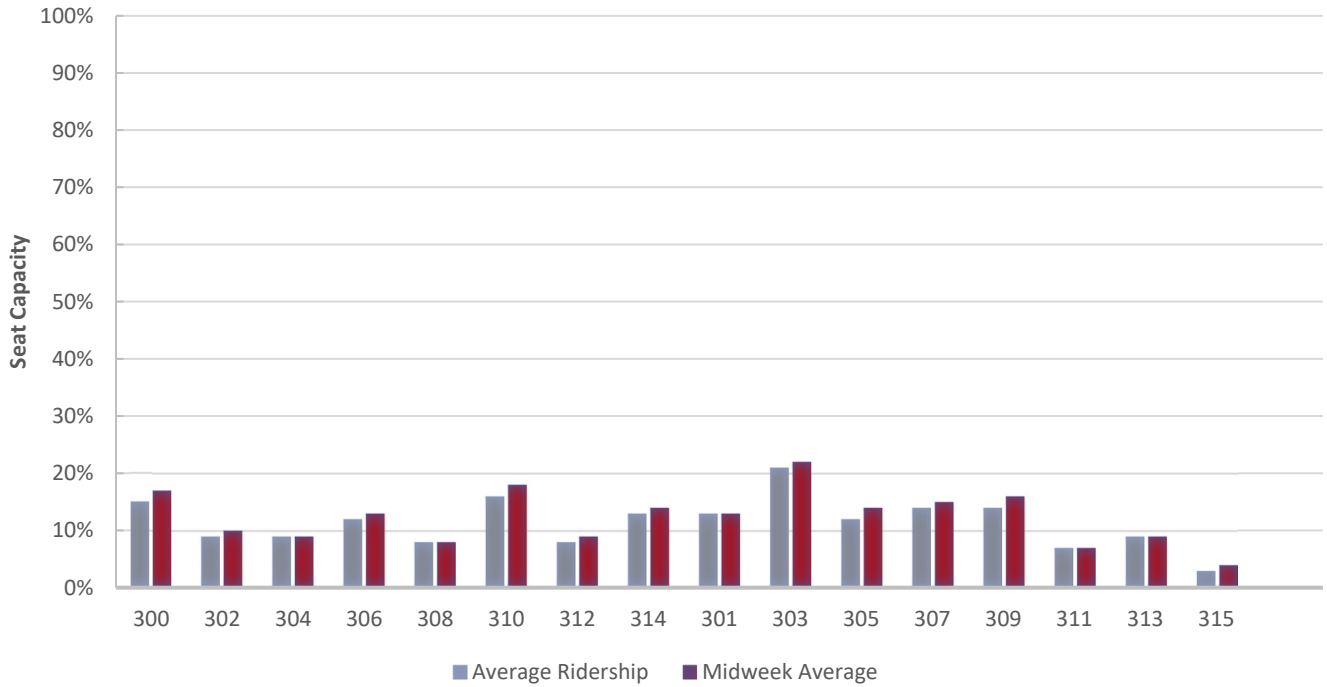
### MONTHLY SUMMONSES COURT ACTION



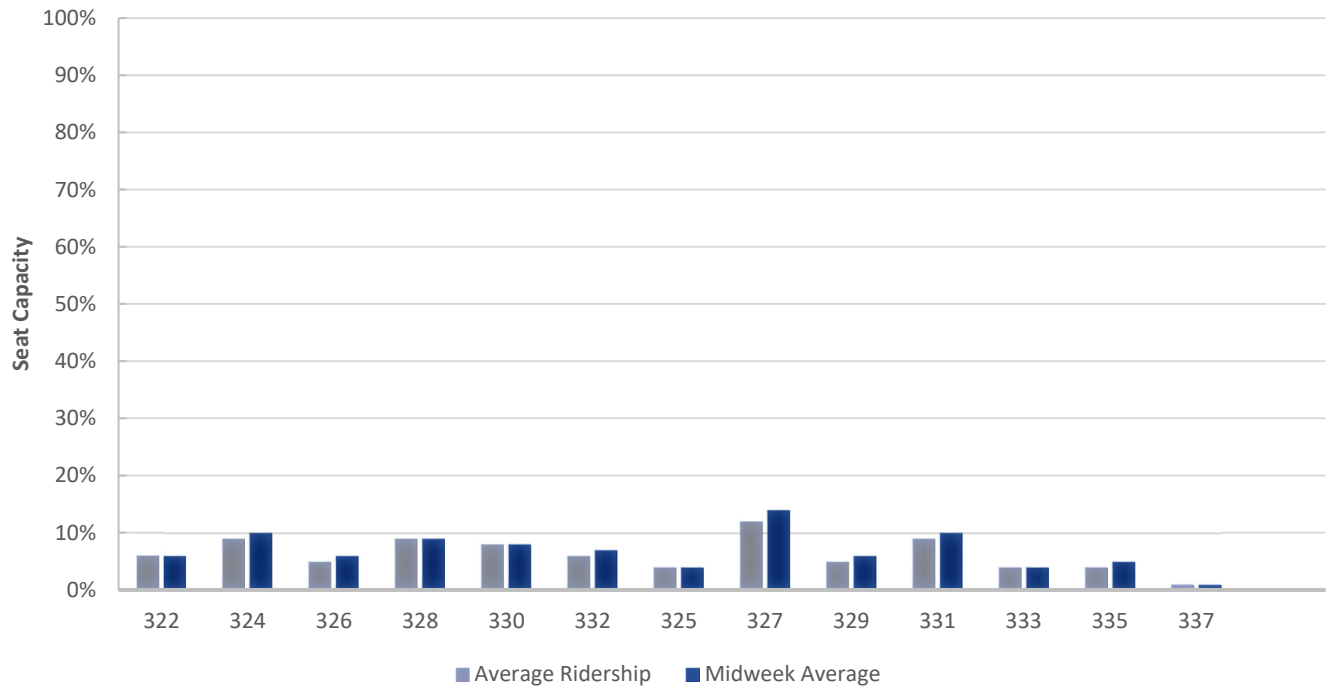


# TRAIN UTILIZATION

## FREDERICKSBURG LINE

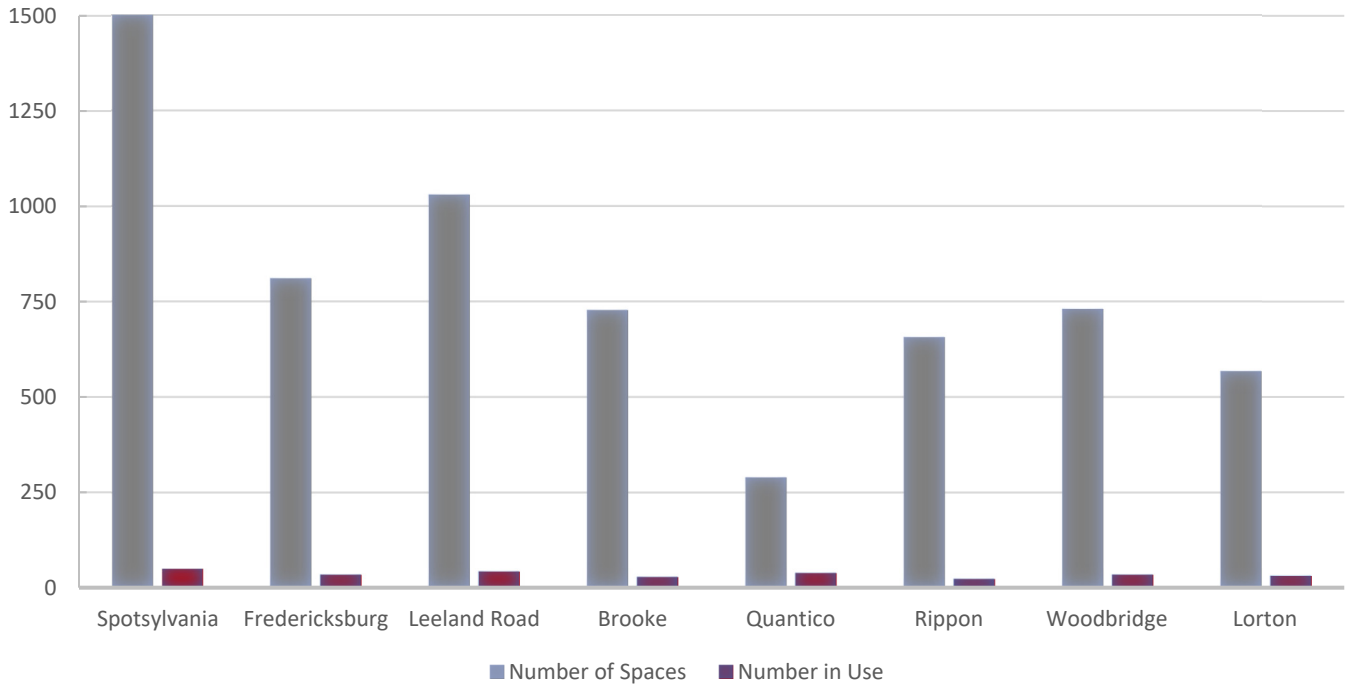


## MANASSAS LINE

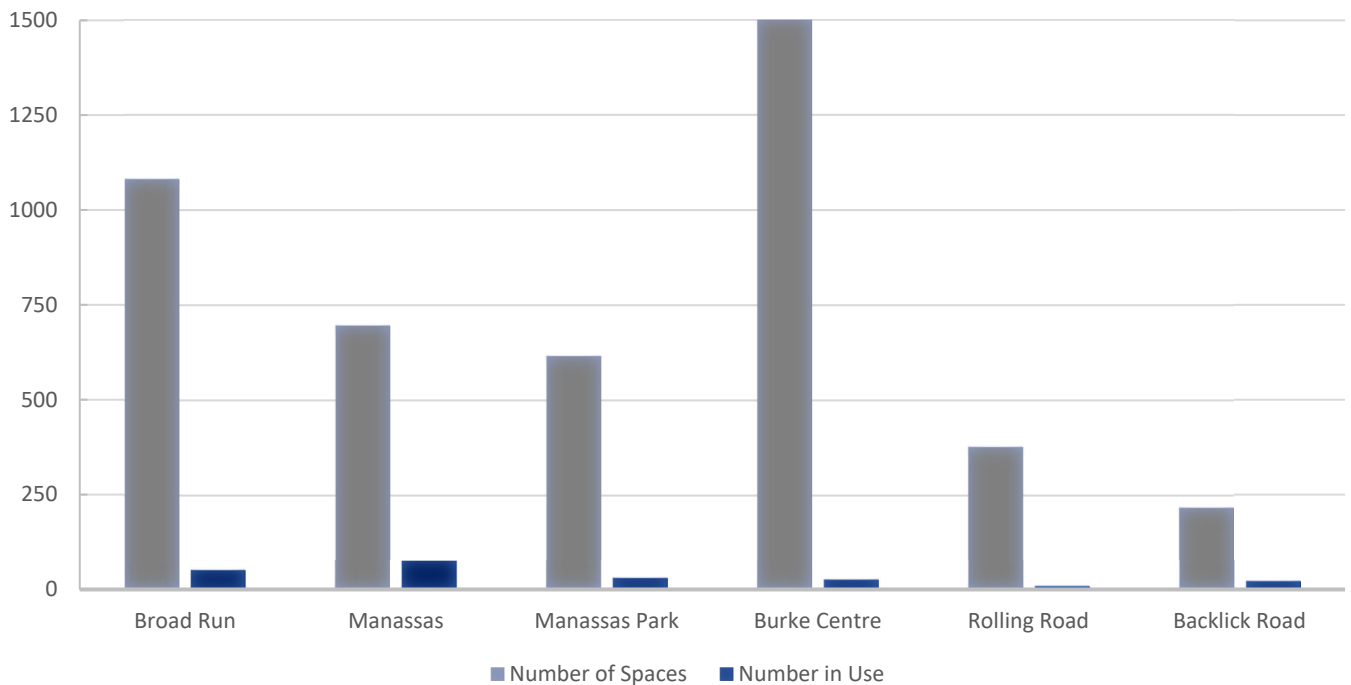


# PARKING UTILIZATION

## FREDERICKSBURG LINE



## MANASSAS LINE



# FACILITIES UPDATE

The following is a status update of VRE facilities projects.

Completed projects:

1. Repair of minor cracks and sealant on platform at Manassas station
2. Replacement of deck joint sealant at Manassas station parking garage
3. Submission of RFQ package for additional waste and recycling receptacles for stations

Projects scheduled to be completed this quarter:

1. Replacement of west platform and canopy lighting at Woodbridge station
2. Installation of electrical conduits for Dominion relocation at Quantico station
3. Painting of Brooke station
4. Pavement repairs and restriping at Fredericksburg Lot G

Projects scheduled to be initiated this quarter:

1. Minor stair steel repairs and caulking at Franconia-Springfield station
2. Painting of Franconia-Springfield station
3. Minor structural repairs at Woodbridge and Manassas parking garages
4. Repairs and testing of dry standpipes at Woodbridge and Manassas parking garages
5. Repair of platform sealant at Rippon station
6. Minor concrete repairs at Rippon and Brooke stations
7. Pavement repairs and restriping at Woodbridge station surface parking lot and kiss & ride
8. Replacement of signage at Woodbridge station
9. Pavement repairs and restriping at Leeland Road station
10. Repair of platform sealer delamination at Spotsylvania station
11. Replacement of lighting at Manassas station parking garage
12. Issuance of general signage services request for quotes

JULY 2021

Ongoing projects:

1. Design of waiting area at L'Enfant station
2. Construction of final phases of renovations to Alexandria headquarters  
(See photos of completed demolition work below)
3. Overhaul of emergency generators at Woodbridge and Manassas stations, Alexandria headquarters and Fredericksburg office



## UPCOMING PROCUREMENTS

- Renewal of locomotive head end power engine systems
- Program management consulting services
- Modernization of VRE Woodbridge Station east elevator
- Forklift trucks
- Passenger car wheelchair lift assemblies
- Purchase of LED light fixtures
- Variable Messaging System replacement
- Tactile strip replacements
- Construction management services for Fredericksburg Station platform rehabilitation
- Construction of Fredericksburg Station platform rehabilitation
- Construction Manager / General Contractor for the Alexandria Station improvements project
- General planning consulting services

# CAPITAL PROJECTS UPDATES

The following is a status update of VRE capital projects.

Completed projects or major project milestones:

1. Construction initiated on Rolling Road station improvements
2. Construction initiated on Lifecycle Overhaul & Upgrade Facility (LOU)
3. Construction initiated on Quantico station improvements

Projects or project phases scheduled to be completed this quarter:

4. Franconia-Springfield Station Improvements draft 100% plans and specifications
5. Broad Run Expansion (BRX) Section 106 Consultation
6. Construction of Benchmark Road Slope Stabilization Complete (Hamilton to Crossroads overall project/funding closeout and stakeholder concurrence anticipated this quarter)

Projects or project phases scheduled to be initiated this quarter:

7. Manassas Park parking expansion 60% relocation design
8. Potomac Shores 100% design (design by others)

Ongoing projects:

9. Broad Run Expansion (BRX)
10. Manassas Park Parking Improvements
11. Rolling Road Station Improvements
12. Crossroads Maintenance and Storage Facility (MSF)
13. Lifecycle Overhaul & Upgrade Facility (LOU)
14. Quantico Station Improvements
15. Franconia-Springfield Station Improvements
16. Alexandria Station Improvements
17. Alexandria Station Track I Access (Slaters Lane)
18. Crystal City Station Improvements
19. L'Enfant Train Storage Track - South
20. L'Enfant Station Improvements
21. New York Avenue Midday Storage Facility

JULY 2021

22. Potomac Shores VRE Station – *design by others*
23. Washington Union Station Improvements Environmental Impact Statement – *study by others*
24. DC2RVA Environmental Impact Statement – *study by others*
25. Long Bridge Project – *study by others*

*Projects Progress Report Follows*

## PASSENGER FACILITIES

PROJECT	DESCRIPTION	PHASE					
		CD	PE	EC	RW	FD	CN
Alexandria Station Improvements	Eliminate at-grade track crossing, add elevators, modify platforms.	◆	◆	◆	N/A	●	
Franconia-Springfield Station Improvements	Extend both platforms and widen East Platform for future third track.	◆	◆	◆	N/A	●	
Potomac Shores Station Improvements	New VRE station and parking in Prince William County provided by private developer.	◆	●	◆	N/A		
Quantico Station Improvements	Extend existing platform, construct new second platform with pedestrian overpass.	◆	◆	◆	N/A	◆	●
Manassas Park Parking Improvements	Parking garage to increase parking capacity to 1,100 spaces.	◆	◆	●	N/A		
Rolling Road Station Improvements	Extend existing platform and rehabilitate existing station	◆	◆	◆	N/A	◆	●
Crystal City Station Improvements	Replace existing side platform with new, longer island platform.	◆	●	●	N/A		
L'Enfant Station Improvements	Replace existing platform with wider, longer island platform. Add fourth track (VA-LE)	◆			N/A		

PHASE: CD - Conceptual Design PE - Preliminary Engineering EC - Environment Clearance  
RW - Right of Way Acquisition FD - Final Design CN - Construction

STATUS: ◆ Completed ● Underway ■ On Hold

<sup>1</sup> Total project cost estimate in adopted FY2020 CIP Budget; percentage complete based on VRE Operations Board authorization

<sup>2</sup> Does not include minor (< \$50,000) operating expenditures

\* \$2,181,630 authorization divided across the "Penta-Platform" program stations

Total	ESTIMATED COSTS (\$)				Percent Complete <sup>1</sup>	Project Completion Date	STATUS
	Funded	Unfunded	Authorized	Expended <sup>2</sup>			
31,875,014	31,875,014	-	2382759	2193257	90%	2nd QTR 2023	● Getting ready for Alternate delivery CMGC Procurement. CSX and City of Alexandria review progressing.
13,000,000	13,000,000	-	*	940,681	35%	4th QTR 2023	● FD underway with anticipated completion 2nd QTR 2021. Ongoing coordination with DRPT projects.
<i>No costs for VRE. Private developer providing station.</i>					30%	TBD	● Potomac Shores VRE Station design underway to include parking structure. Delivery of 100% design anticipated in 2nd Quarter 2021.
18,372,949	18,372,949	0	21,505,529	1,034,908	35%	4th QTR 2023	● Construction underway
25,983,000	25,983,000	0	2,238,144	670,225	30%	4th QTR 2022	● Progressing towards 60% design at relocated site.
5,000,000	2,000,000	3,000,000	640,503	418,887	70%	4th QTR 2021	● Construction underway
49,940,000	19,098,463	30,841,537	1,584,619	1,366,909	30%	2nd QTR 2024	● PE & EC anticipated completion 3rd QTR 2021. 60% Design anticipated afterwards.
70,650,000	62,465,721	8,184,279	130,501	65,150	50%	2nd QTR 2023	● DRPT LONP received. Real estate research in progress under LONP.



## MAINTENANCE AND STORAGE FACILITIES

PROJECT	DESCRIPTION	PHASE					
		CD	PE	EC	RW	FD	CN
Lifecycle Overhaul & Upgrade Facility	New LOU facility to be added to the Crossroads MSF.	◆	◆	◆	N/A	◆	●
New York Avenue Midday Storage Replacement Facility	Midday storage facility replacement for Ivy City storage facility.	◆	●	●	●		

## PLANNING, COMMUNICATIONS AND IT

Broad Run Expansion (was Gainesville-Haymarket Extension)	NEPA and PE for expanding commuter rail service capacity in Western Prince William County	◆	●	●	-	-	-
Mobile Ticketing	Implementation of a new mobile ticketing system.	◆	N/A	N/A	N/A	◆	◆

PHASE: CD - Conceptual Design PE - Preliminary Engineering EC - Environment Clearance  
RW - Right of Way Acquisition FD - Final Design CN - Construction

STATUS: ◆ Completed ● Underway ■ On Hold

<sup>1</sup> Total project cost estimate in adopted FY2020 CIP Budget; percentage complete based on VRE Operations Board authorization

<sup>2</sup> Does not include minor (< \$50,000) operating expenditures

Total <sup>1</sup>	ESTIMATED COSTS (\$)				Percent Complete <sup>1</sup>	Project Completion Date	STATUS
	Funded	Unfunded	Authorized	Expended <sup>2</sup>			
38,183,632	38,183,632	-	48,342,297	5,888,376	10%	3rd QTR 2023	● Construction underway
89,666,508	89,666,508	-	3,588,305	2,257,455	90%	4th QTR 2021	● Discussions ongoing with Amtrak related to storage options as well as design and real estate agreements.
110,700,000	82,526,398	28,173,602	5,855,650	4,539,446	80%	4th QTR 2024	● Final 30% design plans and cost estimate complete. NEPA Documented Categorical Exclusion approved by FTA and FAA.
3,510,307	3,510,307	-	3,510,627	2,282,853	100%	1st QTR 2021	● Uplift to new platform completed

*This page intentionally left blank*



## VIRGINIA RAILWAY EXPRESS

1500 KING STREET, SUITE 202 • ALEXANDRIA, VA 22314 • 703.684.1001

VRE.ORG

