

# CEO REPORT

OCTOBER 2022



# OUR MISSION

The Virginia Railway Express, a joint project of the Northern Virginia Transportation Commission and the Potomac Rappahannock Transportation Commission, will provide safe, cost-effective, accessible, reliable, convenient, and customer responsive commuter-oriented rail passenger service. VRE contributes to the economic vitality of its member jurisdictions as an integral part of a balanced, intermodal regional transportation system.



# TABLE OF CONTENTS

CEO REPORT | OCTOBER 2022

## TABLE OF CONTENTS

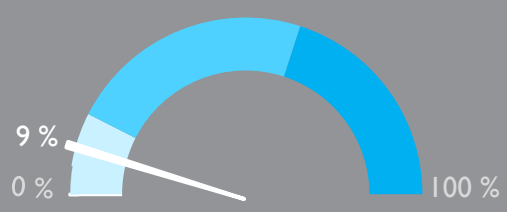
- SUCCESS AT A GLANCE ..... 3
- ON-TIME PERFORMANCE ..... 4
- AVERAGE DAILY RIDERSHIP ..... 6
- SUMMONSES ISSUED ..... 7
- TRAIN UTILIZATION ..... 8
- PARKING UTILIZATION ..... 9
- FACILITIES UPDATE.....10
- UPCOMING PROCUREMENTS .....11
- PROJECTS PROGRESS REPORT .....12



VIRGINIA RAILWAY EXPRESS  
A better way. A better life.

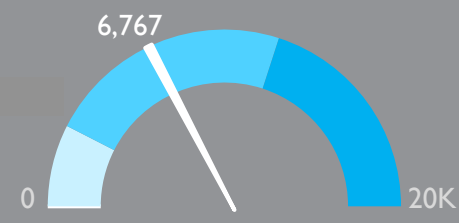


# PERFORMANCE AT A GLANCE



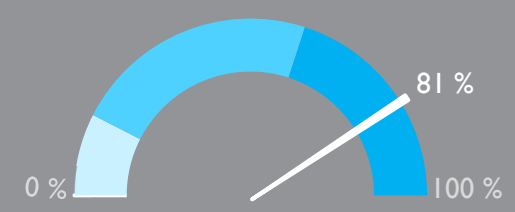
**PARKING UTILIZATION**

The total number of parking spaces used in the VRE system during the month, divided by the total number of parking spaces available.



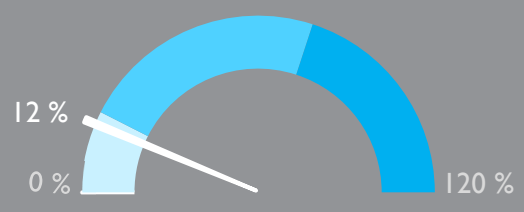
**AVERAGE DAILY RIDERSHIP**

The average number of boardings each operating day inclusive of Amtrak Step-Up boardings and reduced, "S" schedule, service.  
Same month, previous year: 2,726



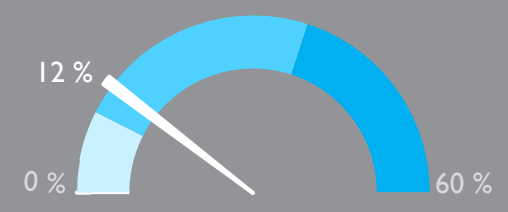
**ON-TIME PERFORMANCE**

Percent of trains arriving at their destination within 5 minutes of the schedule.  
Same month, previous year: 85%



**SYSTEM CAPACITY**

The percent of peak hour train seats occupied. The calculation excludes reverse flow and non-peak hour trains.



**OPERATING RATIO**  
*Through June 2022*

Year-to-date operating revenues divided by year-to-date operating expenses, which represents the share of operating costs paid by the riders.  
Board-approved goal: 52%

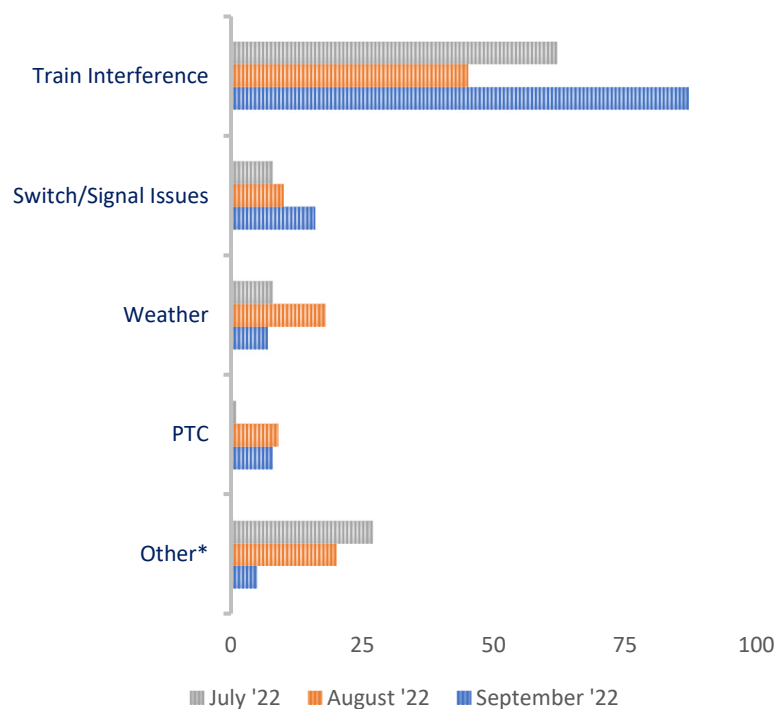
**September 2022**

# ON-TIME PERFORMANCE

## OUR RECORD

	September 2022	August 2022	September 2021
Manassas Line	77%	81%	83%
Fredericksburg Line	86%	91%	87%
Systemwide	81%	86%	85%

## PRIMARY REASON FOR DELAY



VRE operated 664 trains in September. The on-time rate for September was 81 percent.

One hundred twenty-three trains arrived more than 5 minutes late to their final destinations. Of those late trains, 75 were on the Manassas Line (61 percent), and 48 were on the Fredericksburg Line (39 percent).

Train interference, which includes congestion at the terminal in Union Station, was the largest factor contributing to late trains this month.

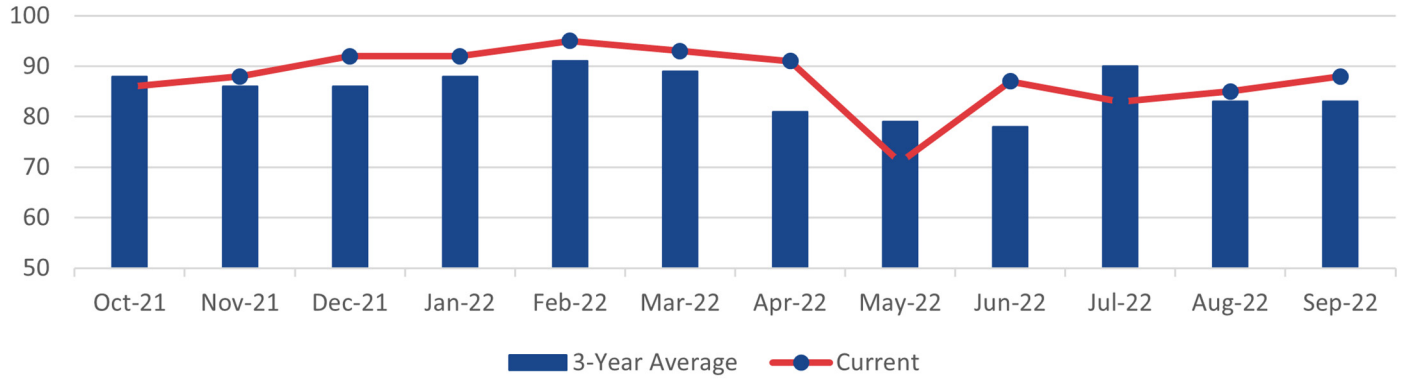
\*Includes trains that were delayed due to operational testing and passenger handling.

## LATE TRAINS

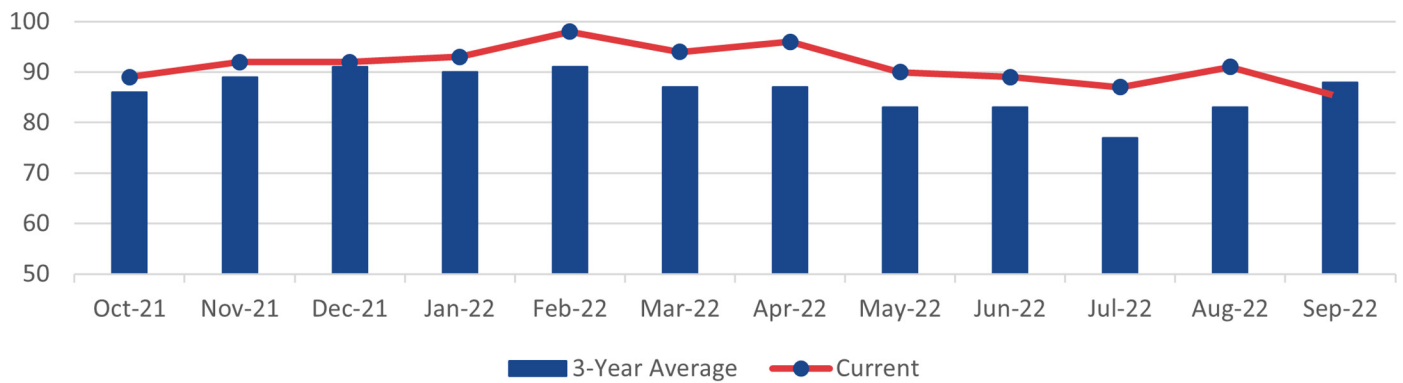
	System Wide			Fredericksburg Line			Manassas Line		
	July	Aug.	Sept.	July	Aug.	Sept.	July	Aug.	Sept.
Total late trains	106	102	123	42	31	48	64	71	75
Average minutes late	21	31	23	28	38	22	17	28	23
Number over 30 minutes	13	20	25	6	7	9	7	13	16
Heat restrictions	14	8	0	14	8	0	0	0	0

## ON-TIME PERFORMANCE

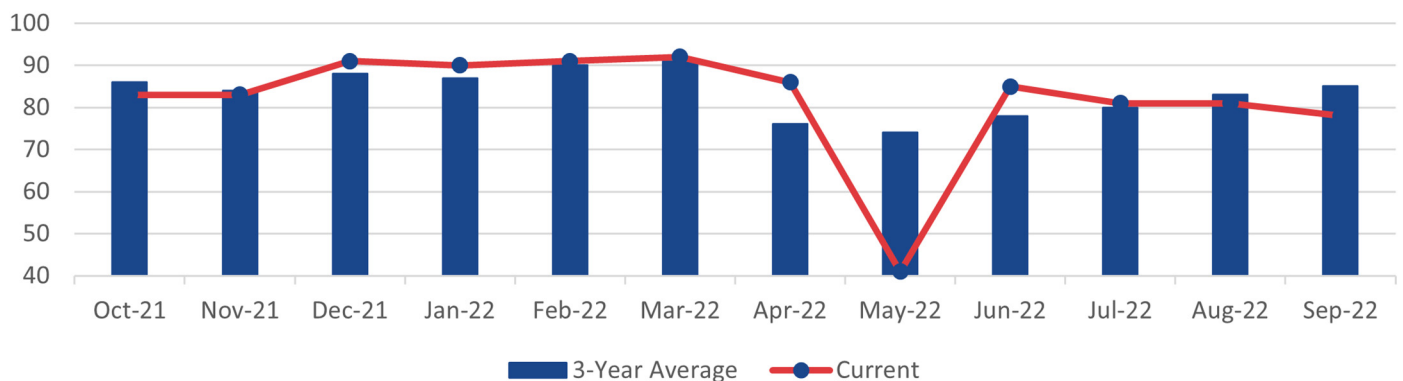
### VRE SYSTEM



### FREDERICKSBURG LINE

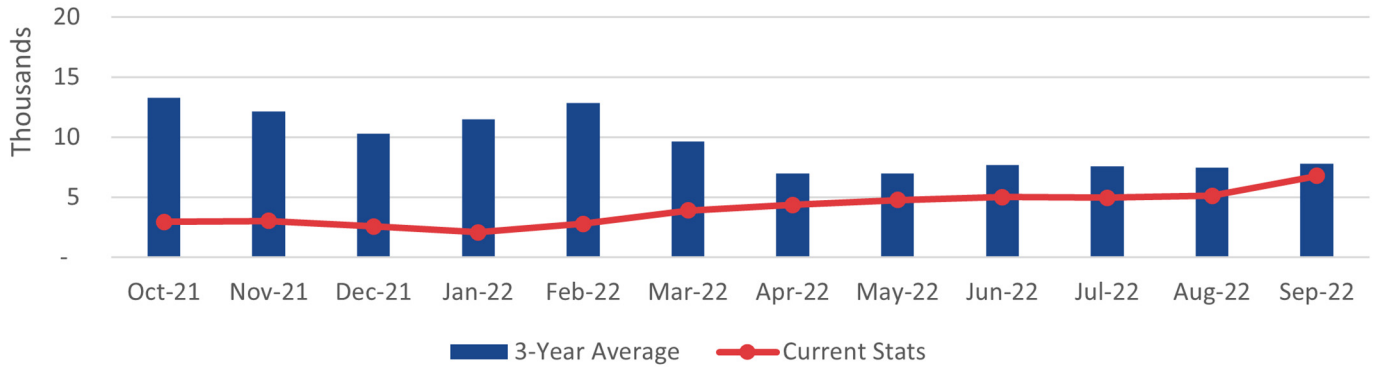


### MANASSAS LINE

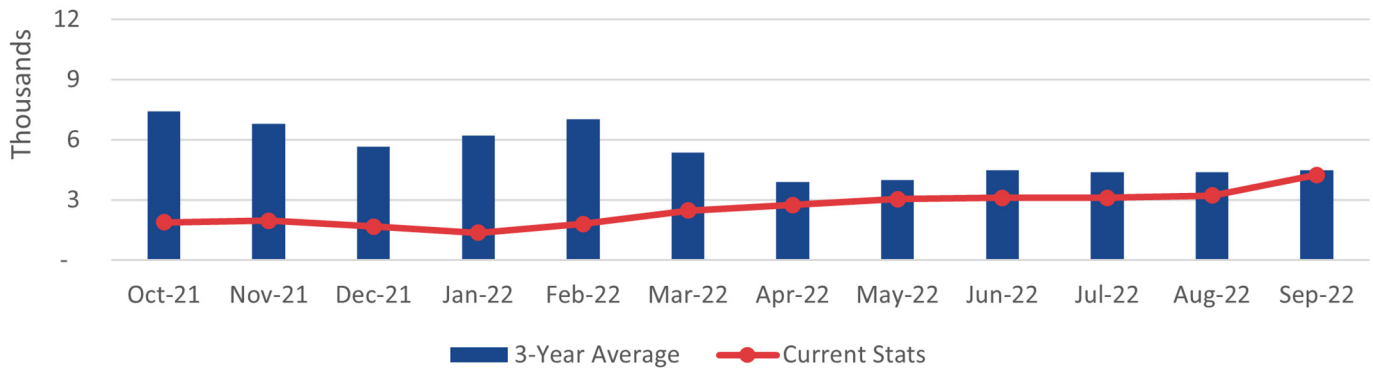


# AVERAGE DAILY RIDERSHIP

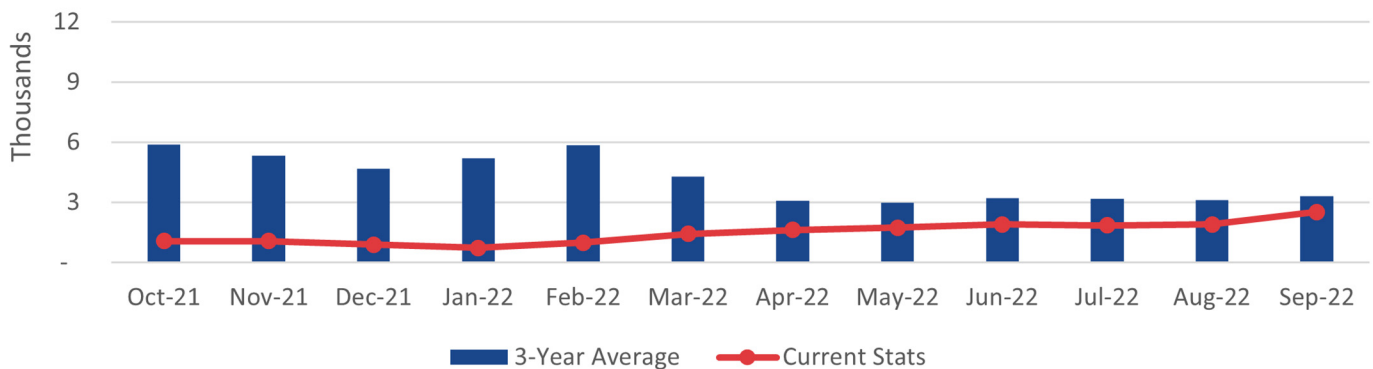
## VRE SYSTEM



## FREDERICKSBURG LINE



## MANASSAS LINE



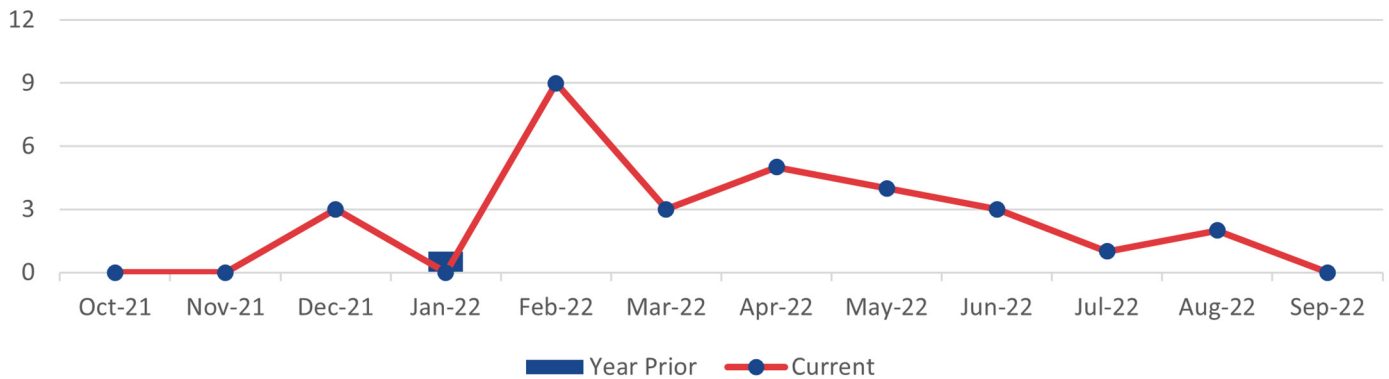
## RIDERSHIP UPDATES

Average daily ridership in September was 6,776, a 32 percent increase over August primarily due to VRE's fare-free promotion. There were 21 service days in the month.

	September 2022	August 2022	September 2021
Monthly Ridership	142,102	117,880	57,255
Average Daily Ridership	6,767	5,125	2,726
Full Service Days	21	23	20
"S" Service Days	0	0	1

## SUMMONSES ISSUED

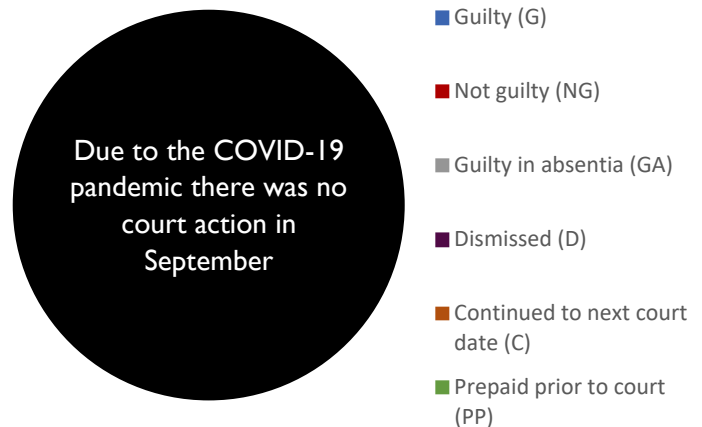
### VRE SYSTEM



### SUMMONSES WAIVED OUTSIDE OF COURT

Reason for Dismissal	Occurrences
Passenger showed proof of a monthly ticket	0
One-time courtesy	0
Per the request of the conductor	0
Defective ticket	0
Per ops manager	0
Unique circumstances	0
Insufficient information	0
Lost and found ticket	0
Other	0
<b>Total Waived</b>	<b>0</b>

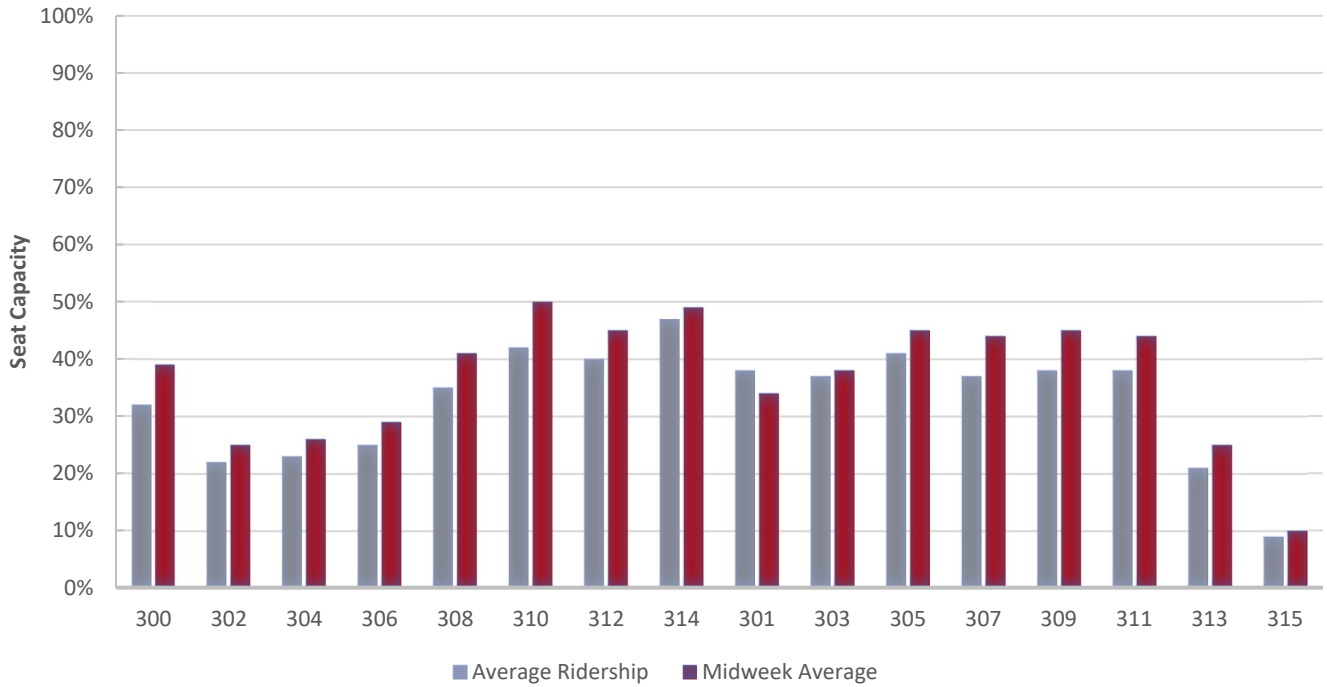
### MONTHLY SUMMONSES COURT ACTION



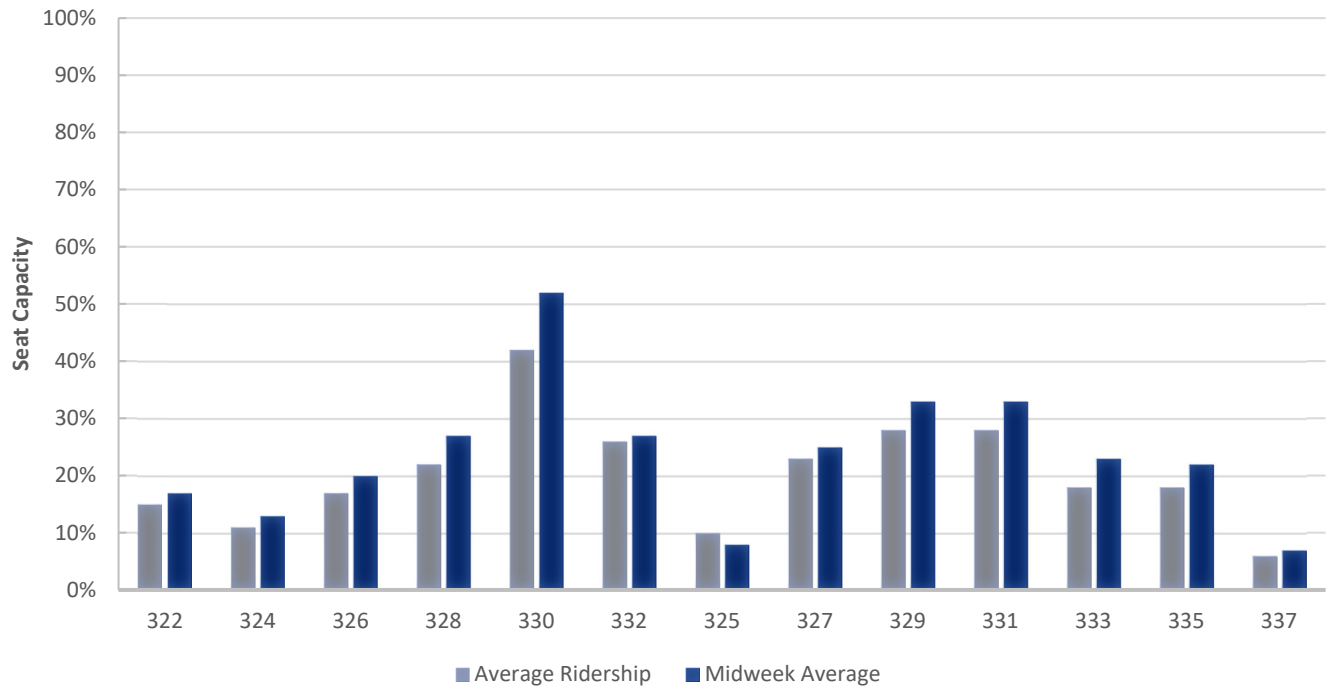


# TRAIN UTILIZATION

## FREDERICKSBURG LINE

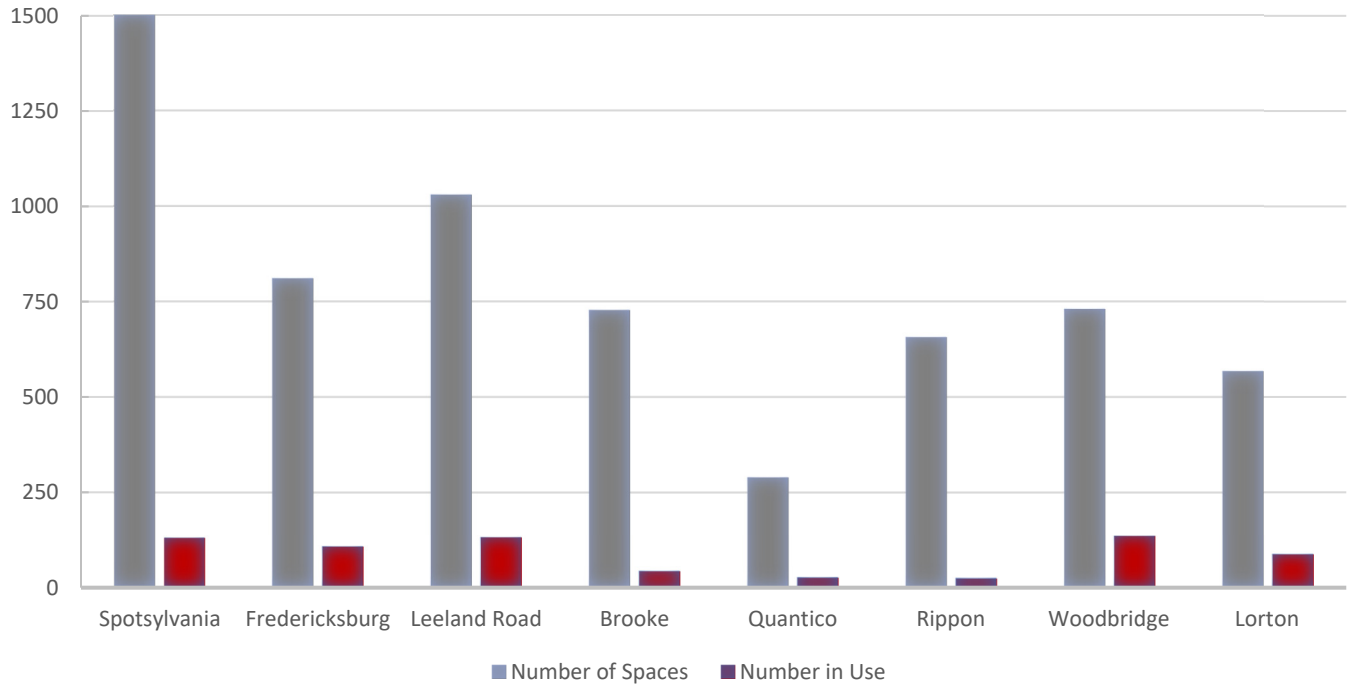


## MANASSAS LINE

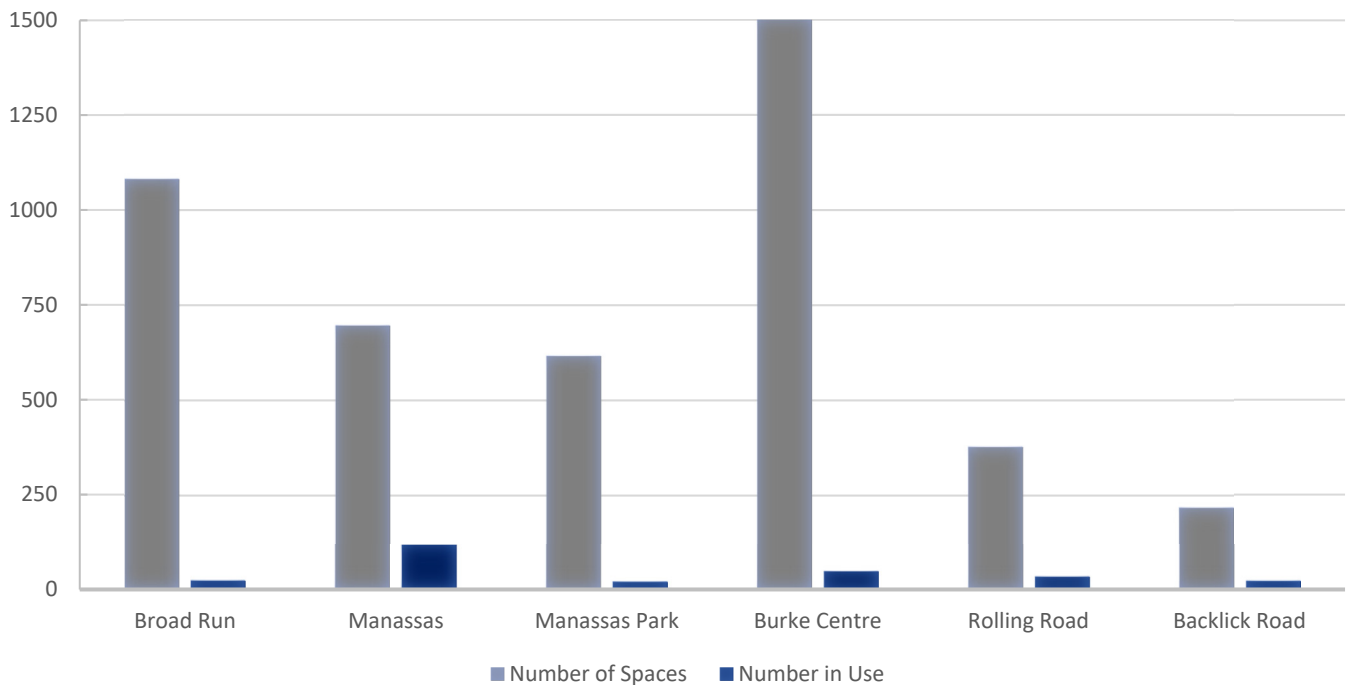


# PARKING UTILIZATION

## FREDERICKSBURG LINE



## MANASSAS LINE



# FACILITIES UPDATE

The following is a status update of VRE facilities projects.

Completed projects:

1. Painting of Rippon, Leeland Road and Backlick Road stations
2. Repair of steel components of ADA lift enclosure at Woodbridge station
3. Replacement of windscreen plexiglass panels at Rippon station
4. Replacement of existing lighting with LED lighting at Fredericksburg Lot G
5. Replacement/installation of pathfinder signage for Fredericksburg and Spotsylvania stations



*New windscreen plexiglass panels at Rippon.*



*New LED lighting at Fredericksburg.*

Projects scheduled to be completed this quarter:

1. Replacement of fluorescent lighting with LED lighting in tunnel at Alexandria station
2. Spot painting of east platform and walkway canopy structural steel at Woodbridge station
3. Repairs and restriping of parking lots at Woodbridge and Rippon stations
4. Minor repairs to steel elements at Leeland Road station
5. Repairs and joint sealant installation in main sidewalk at Spotsylvania station
6. Partial restriping of parking lot at Manassas Park station
7. Replacement of waste and recycling receptacles at various stations
8. Replacement of fluorescent lighting with LED lighting at Fredericksburg office
9. Replacement of ceiling tiles at Fredericksburg office
10. Replacement/installation of pathfinder signage for Franconia-Springfield, Lorton, Woodbridge, Rippon, Quantico, Brooke, Leeland Road, Backlick Road, Rolling Road, Burke Centre, Manassas Park, Manassas and Broad Run stations
11. Installation of 988 Suicide & Crisis Lifeline signage at station platforms
12. Removal and reinstallation of inter-track fences and timber pedestrian crossings at Woodbridge, Lorton, Franconia-Springfield, Alexandria and Crystal City stations to accommodate CSX tie replacement

OCTOBER 2022

Projects scheduled to be initiated this quarter:

1. Minor repairs to concrete at Alexandria station
2. Modernization of east elevator at Woodbridge station
3. Replacement of windscreen plexiglass panels at Lorton and Woodbridge stations
4. Minor repairs to concrete at Burke Centre station
5. Replacement of existing lighting with LED lighting at Manassas station parking garage
6. Installation of additional storage cabinetry at Alexandria headquarters
7. Replacement of platform benches at various stations
8. Replacement of parking lot entrance signs at various stations

Ongoing projects:

1. Issuance of construction task order for minor structural concrete repairs at Woodbridge station parking garage, pending permit issuance
2. Procurement of construction contract for L'Enfant station waiting area project, pending permit issuance
3. Procurement of new five-year maintenance/custodial and seasonal services for VRE facilities contracts

## UPCOMING PROCUREMENTS

1. Station security camera upgrade
2. Forklift trucks
3. Modernization of VRE Woodbridge Station east elevator
4. Tactile strip replacements
5. Construction manager / general contractor for the Alexandria station improvements project
6. Broad Run and Crossroads security camera system power and network infrastructure upgrade
7. Locomotive master controllers
8. Disaster management services

## CAPITAL PROJECTS UPDATE

Project Name	Project Description	Current Phase	Budget	Project Notes
Alexandria Station Improvements	Passenger safety will be improved by replacing an at-grade pedestrian track crossing with elevators to connect the two platforms. The elevators and the current and proposed stairs, will connect to the existing tunnel between the two platforms. Adjustments to platform elevation will eliminate the need for step-boxes to access VRE and Amtrak trains. The center platform will be widened and lengthened to accommodate trains on both tracks.	Final Design	\$ 30,975,014.00	Permit coordination ongoing with City of Alexandria. Design coordination ongoing with CSX Alexandria 4th Track Project. CM/GC procurement documents being prepared for construction (Oct.) Coordination with CSX Alexandria 4th Track Project (~30% Development) ongoing (Sept.)
Broad Run Expansion	To accommodate forecasted ridership growth and increase service reliability, improvements are needed at both the Maintenance and Storage Facility (MSF) and station. An enlarged MSF can store longer trains and additional equipment. That requires shifting the existing platform and adding a pedestrian tunnel between the platform and existing and proposed parking lots. A second, 600-space lot and third main track will be constructed.	Final Design	\$ 137,230,000.00	Reviewing updated 30% design package from Transystems team with transition to new VRE project manager (Oct.) 30% redesign submitted for VRE review. Additional fieldwork/borings completed (Sept.)
Brooke Station Improvements	Design and construction of a platform extension up to 700 feet to accommodate full-length VRE trains.	Development	\$ 9,284,208.00	VRE has reengaged this project and returned it to the CIP Budget for future years. Project schedule updates pending input from various stakeholders. (Sept. & Oct.)
Crossroads MSF - Storage Expansion, Short-term	The project constructs additional storage tracks at the Crossroads Maintenance and Storage Facility (MSF) adjacent to the existing facility.	Development	\$ 8,365,765.00	VPRA has signed a LONP, allowing development and design work to proceed. (Sept. & Oct.)
Crystal City Station Improvements	Improved station access and service reliability will result from a new station. The platform at the relocated station will allow for the simultaneous boarding of two full-length trains. The station's design will accommodate a future pedestrian/bicycle connection between the station and the airport.	Development	\$ 50,114,624.00	Final design efforts are underway as package advances toward the 60% deliverable. (Oct.) Stakeholder coordination continues for implementation of the phased design and construction approach. (Sept.)
Facilities Design Guidelines Update	Update to the 2019 VRE Facility Design Guidelines.	Final Design	\$ 80,000.00	Task order is complete. Future document updates will take place under separate contract. (Sept. & Oct.)
Franconia-Springfield Station Improvements	Extended platforms will be able to accommodate eight-car trains, eliminating the need for passengers near the rear to move to a different railcar when disembarking. Enhanced passenger safety and reduced station dwell times will result. The longer platforms will increase operational flexibility and capacity. The design will allow for a future third mainline track.	Final Design	\$ 13,000,000.00	Wetlands delineation findings being verified. Platform design review will determine updates necessary to accommodate CSX 3rd Track and pedestrian tunnel. (Oct.) NEPA process underway for pedestrian tunnel. (Sept.)

- continued next page -

## CAPITAL PROJECTS UPDATE

Project Name	Project Description	Current Phase	Budget	Project Notes
Fredericksburg Station Rehabilitation	The rehabilitation of platforms, stairs and bridges will improve passenger safety and better accommodate the boarding and disembarking of riders from VRE and Amtrak trains. New stairs will allow passengers to move between the platform and a parking lot without crossing the street at grade level. New signage, sidewalks, lighting and paint are included, as is installation of a low-clearance warning sign to a bridge that has experienced numerous vehicle strikes.	Construction	\$ 3,000,000.00	Clark insurance approved by CSX. Anticipate execution of contract this month. NTP anticipated January 2023. (Oct.) Waiting on final construction funding to execute contract (Sept.)
HQ Office Renovations	The project will improve employee safety and security and maximize workspace efficiency at VRE Headquarters, and will include modifications to kitchen, supply room, mail room, bathroom/shower, office and cubicle areas in the north and south wings. The east wing will be modified to include additional offices.	Construction	\$ 250,000.00	Awaiting revised shop drawings for additional cabinetry in reception area and break room. (Oct.) Reviewing shop drawings for additional cabinetry in reception area and break room. (Sept.)
Leeland Road Parking Improvements	This project will expand the surface parking lot at the Leeland Road station by approximately 225 spaces to accommodate future demand.	Development	\$ 5,519,178.00	The project is funded through Virginia SMART SCALE. Funding is allocated for FY20 and 22. A funding agreement is pending. (Sept. & Oct.)
Leeland Road Station Improvements	Design and construction of a platform extension to accommodate full-length VRE trains.	Development	\$ 6,736,091.00	VRE has reengaged this project and returned it to the CIP budget for future years. Project schedule updates pending input from various stakeholders. (Sept. & Oct.)
L'Enfant Station Waiting Area	The existing platform at the L'Enfant station experiences overcrowding during the evening service period. The proposed project will create an additional paved area behind the existing platform, currently landscaped with shrubs and grass, for riders to wait for trains or to bypass riders waiting on the platform.	Final Design	\$ 350,000.00	Met onsite with Boston Properties (BP), adjacent property owner, to discuss brief use of loading dock during construction. Awaiting draft agreement from BP. (Sept. & Oct.)
L'Enfant Track and Station Improvements	Expansion of the VRE L'Enfant Station to provide two platform edges and serve full-length trains. Add a new mainline track between LE and VA interlockings.	Development	\$ 79,980,000.00	Conceptual design for a preferred alternative is underway and is scheduled to be complete Sept. 2022. (Sept. & Oct.)

- continued next page -

## CAPITAL PROJECTS UPDATE

Project Name	Project Description	Current Phase	Budget	Project Notes
Lifecycle Overhaul and Upgrade (LOU) Facility	Featuring 33,000 square feet of maintenance space, the LOU will allow VRE to cost-effectively maintain rolling stock, as well as systems and components, in a state of good repair. It will optimize maintenance and reduce costs by allowing the in-house replacement of items before they fail. The LOU will house two tracks that can hold up to four cars at one time and be equipped with a drop table and wheel truing machine. To maintain storage capacity within Crossroads Yard three new tracks are being constructed to provide enhanced flexibility to our operations crews for train movements and storage.	Construction	\$ 52,183,632.00	Metal building cladding, doors, windows and masonry continue to advance as work on main roof and remaining track alignments begin this month. (Oct.) Placement of final beam celebrated during a topping off ceremony attended by 120+ (Sept.)
Manassas Park Parking Expansion	A new garage will nearly double the 600 spaces currently available in the existing surface lot. A pedestrian bridge will provide grade-separated access to the existing platform and lot. The VRE station and garage are an integral part of the City Center Redevelopment District, the proposed transit-accessible high-density mixed-use town center of Manassas Park.	Final Design	\$ 25,983,000.00	Resolving final building plan comments by city. As-built survey done to finalize topography before invitation for bids. (Oct.) Building plan review comments addressed. 3rd site plan submitted to city. Waiting on a response from city. (Sept.)
Manassas Station Improvements	The project expands the VRE Manassas Station platform to serve full length trains and enhances pedestrian access to the station. Alternatives to increase the platform length to enable boarding and alighting from all passenger cars will be evaluated.	Development	\$ 9,125,000.00	This project is funded with I-66 OTB funding. Initiation of project planning pending completion of a Force Account Addendum with Norfolk Southern Railway. (Sept. & Oct.)
New York Avenue Midday Storage Facility	This new facility will store trains currently located in Amtrak's Ivy City coach yard, as Amtrak now has need for the storage tracks. The New York Avenue site, which is proximate to Washington Union Station, will be able to accommodate additional VRE trains.	Development	\$ 89,666,508.00	Projected project cost and schedule current with CIP updates. Draft project agreements returned to Amtrak for review. (Oct.) Draft agreements received from Amtrak. VRE currently reviewing (Sept.)
Potomac Shores Station	This new station, in a master-planned community in Prince William County, is being funded, designed, and constructed by the developer of Potomac Shores in consultation with VRE and other stakeholders. The station will be just a short walk from the town center. A new side platform will be constructed which is designed to be converted into an island platform in the future when the 3rd track is added to corridor operations.	Final Design	\$ -	Developer design team addressing final round of CSX comments along with finalizing design using adjacent property (Oct.) VPRA, CSX and VRE comments incorporated into final 100% plans for pre-final review cycle. CSX sent resolution to all except Geotech/Disposal.. CSX reviewing (Sept.)

- continued next page -

## CAPITAL PROJECTS UPDATE

Project Name	Project Description	Current Phase	Budget	Project Notes
Quantico Station Improvements	Service and safety will be enhanced through the construction of a new center platform, ADA-compliant pedestrian bridges, existing platform extension, and third track. These improvements will allow the station to accommodate additional passengers and more frequent and longer trains and operations flexibility with three boardable platform edges.	Construction	\$ 23,973,061.00	Platform concrete and canopy installation progressing on both platforms. Structural steel welding nearing completion. Soil nail wall progressing. (Oct.) Pedestrian bridge steel span placement done 8/26 & 8/27. Platform concrete progressing on both platforms. (Sept.)
Rippon Station Improvements	Extend existing platform with a second pedestrian overpass.	Development	\$ 16,634,794.00	VRE has reengaged this project and returned it to the CIP budget for future years. Project schedule updates pending input from various stakeholders. (Sept. & Oct. 2022)
Rolling Road Station Improvements	An extended platform will accommodate eight-car trains, eliminating the need for passengers near the rear to move to a different railcar when disembarking. Enhanced passenger safety and reduced station dwell times will result. Rehabilitation and repair of the existing platform, replacement of stairs and the existing canopy roof, and an upgrade of the lighting and communication systems are planned.	Construction	\$ 5,000,000.00	Project work is substantially complete, with Punchlist items being completed. (Oct.) Final site work is complete. Existing platform repairs are ongoing. Ribbon-cutting ceremony planned. (Sept..)

For more information about VRE capital projects, visit <https://projects.vre.org/list>



*This page intentionally left blank*



## VIRGINIA RAILWAY EXPRESS

1500 KING STREET, SUITE 202 • ALEXANDRIA, VA 22314 • 703.684.1001

VRE.ORG

